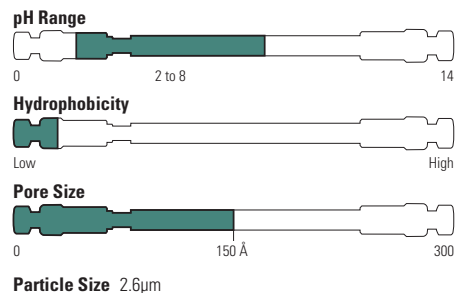


Accucore 150-Amide-HILIC

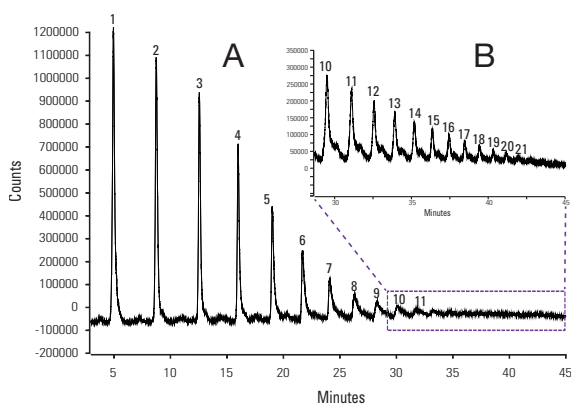
HPLC column for neutral glycan analysis

- Amide phase bonded onto 150 Å pore diameter solid core particles
- High retention of a broad range of hydrophilic analytes in HILIC mode
- Recommended for hydrophilic biomolecules such as glycans

The amide bonded phases provide strong hydrogen bonding interaction between the stationary phase and the analytes, resulting in unique selectivity compared to other HILIC phases. Combined with larger pore size of the solid core particles, Accucore 150-Amide-HILIC is well suited for separating a variety of hydrophilic molecules, including carbohydrates and peptides. As a result, the Accucore 150-Amide-HILIC is an excellent choice for glycan separations.



2-AB labeled dextran ladder



Accucore 150-Amide-HILIC, 2.6µm, 100 x 2.1mm

Mobile Phase A:	Acetonitrile
Mobile Phase B:	50mM Ammonium formate, pH 4.5
Gradient:	20–50 % B in 40.0 minutes 50 % B for 5.0 minutes 50–20 % B in 0.5 minutes 50 % B for 4.5 minutes
Temperature:	60°C
Flow Rate:	500µL/min
Backpressure at Starting Conditions:	110 bar
Injection Volume:	2µL to 5µL of sample.
Injection Wash Solvent:	80:20 (v/v) acetonitrile:water.
Detector:	Fluorescence, 330nm excitation wavelength; 420nm emission wavelength; acquisition start after 3 min from gradient start.
Run Time:	50 minutes

(A) 2µL injection of sample, where 11 glycans were separated.

(B) 5µL injection of sample, zoomed-in to the later part of the gradient rise. A further 10 glycans were detected.

Accucore 150 Amide-HILIC

Particle Size (µm)	Format	Length (mm)	2.1mm ID	3.0mm ID	4.6mm ID
2.6	Defender Guard (4/pk)	10	16726-012105	16726-013005	16726-014005
	HPLC Column	50	16726-052130	16726-053030	16726-054630
		100	16726-102130	16726-103030	16726-104630
		150	16726-152130	16726-153030	16726-154630
		250	16726-252130	-	-
Guard Cartridge Holder			852-00	852-00	850-00

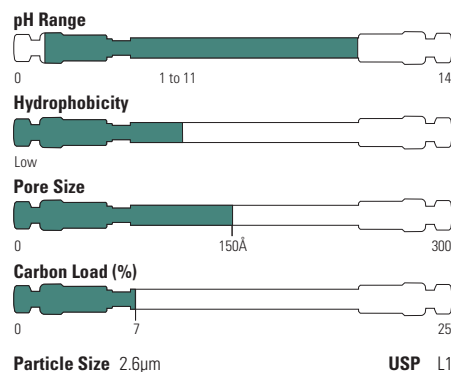
For our range of nanoLC columns refer to page **3-043**

Accucore 150-C18

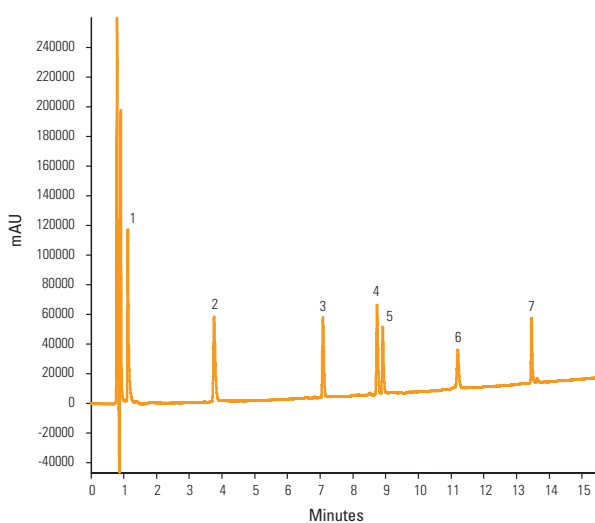
- Designed for the separation of peptides
- Outstanding resolution
- 150Å pore diameter material

Higher peak capacities facilitate increased peptide identifications. Accucore 150-C18 provides much narrower peak widths, therefore significantly higher peak capacity than a column packed with <math><2\mu\text{m}</math> wide pore fully porous C18.

Precision of retention times is critical for reliable analysis. The Accucore 150-C18 column exhibits excellent retention time reproducibility.



Peptide separations



Accucore 150-C18, 2.6µm, 100 x 2.1mm

Mobile Phase A:	0.1% TFA in 10:90 acetonitrile:water
Mobile Phase B:	0.1% TFA in 70:30 acetonitrile:water
Gradient:	0-50% B over 15 min; hold for 2 min; drop to 0% in 0.1 min; hold at 0% B for 5 min
Temperature:	35°C
Flow Rate:	300µL/min
Injection Volume:	5µL
Detection:	UV, 220nm
Analytes:	1. Glycine-Tyrosine 2. Valine-Tyrosine-Valine 3. Met-Enkephalin 4. Angiotensin III 5. Leu-Enkephalin 6. Ribonuclease A 7. Insulin

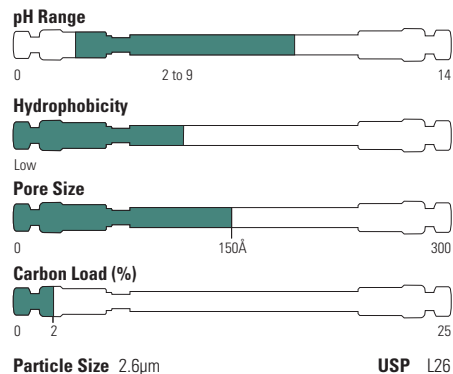
Accucore 150-C18

Particle Size (µm)	Format	Length (mm)	2.1mm ID	3.0mm ID	4.6mm ID
2.6	Drop-in Guard (4/pk) HPLC Column	10	16126-012105	16126-013005	16126-014005
		30	16126-032130	16126-033030	16126-034630
		50	16126-052130	16126-053030	16126-054630
		100	16126-102130	16126-103030	16126-104630
		150	16126-152130	16126-153030	16126-154630
	UNIGUARD Guard Cartridge Holder	10	852-00	852-00	850-00

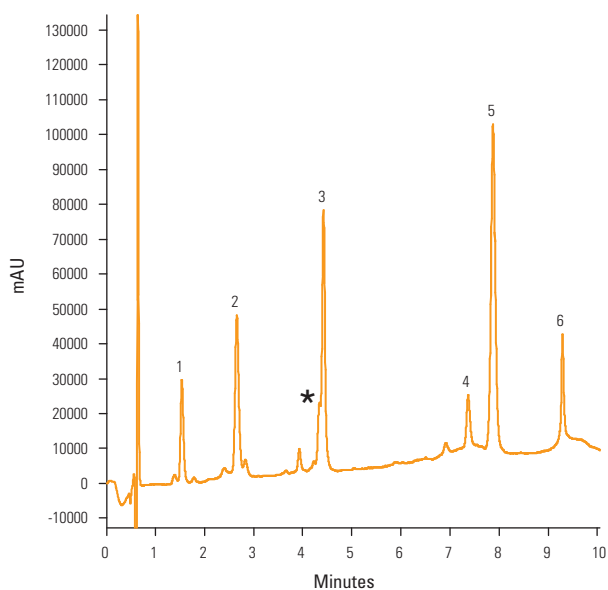
Accucore 150-C4

- Significantly lower hydrophobic retention than C18
- Ideal for retention of proteins and larger peptides

Accucore 150-C4 provides significantly sharper and higher peaks than a column packed with 5µm wide pore fully porous C4, thus offering better resolution and sensitivity. The Accucore 150-C4 also performs better than a column packed with <2µm wide pore fully porous C4 and generates only a fraction of the backpressure.



Intact proteins



Accucore 150-C4, 2.6µm, 100 x 2.1mm

Mobile Phase A: 0.1% TFA in 30:70 acetonitrile:water

Mobile Phase B: 0.1% TFA in 98:2 acetonitrile:water

Gradient: 0-30% B over 8 mins

30-95% B over 2 mins

95% B hold for 1 min

0% B hold for 4 mins

Temperature: 40°C

Flow Rate: 400µL/min

Injection Volume: 2µL 10pmol/µL solution

Detection: UV, 214 and 280nm

Analytes:

1. Insulin

2. Cytochrome C

3. Lysozyme

4. Myoglobin

5. Carbonic anhydrase

6. Ovalbumin

* Carbonic anhydrase impurity

Accucore 150-C4

Particle Size (µm)	Format	Length (mm)	2.1mm ID	3.0mm ID	4.6mm ID
2.6	Drop-in Guard (4/pk) HPLC Column	10	16526-012105	16526-013005	16526-014005
		30	16526-032130	16526-033030	16526-034630
		50	16526-052130	16526-053030	16526-054630
		100	16526-102130	16526-103030	16526-104630
		150	16526-152130	16526-153030	16526-154630
	UNIGUARD Guard Cartridge Holder	10	852-00	852-00	850-00