

Pixie Hydraulic Press

AT A GLANCE

- ▶ 7-mm diameter die
- ▶ Applied force up to 2.5 tons
- ▶ Integrated force gauge
- ▶ Easy-to-use, ergonomic design
- ▶ Small footprint

The Pixie is a portable, manual, hydraulic press for making high-quality KBr pellets.

With the press' ergonomic design, pellet making is easy and effortless. Pixie's small footprint makes it ideal for limited bench-space environments and glove boxes, and for storability. KBr pellets for IR transmission measurements are required by a number of standardized procedures, including some USLP and ASTM methods. Advantages of pellet making are spectral reproducibility and the ability to deal with relatively difficult or limited-mass samples.

The pellet preparation involves loading of the powdered KBr/sample matrix into the die chamber and placing the assembled die onto the platform of the hydraulic press. Force up to 2.5 tons may be applied. The die collar containing the newly formed pellet is placed into the designated holder and is positioned in the spectrometer's 2 x 3" slide mount holder for measurement.

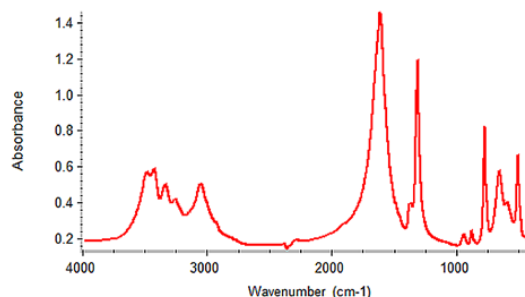


PART NUMBER	DESCRIPTION
181-1410	Pixie Hydraulic Press Package Includes Pixie Hydraulic Pellet Press, 7-mm die set with two additional die collars, pellet holder, 35-mm agate mortar, KBr (50 g) and spoon spatula
162-1010	Premium Transmission Sampling Kit Includes Pixie Hydraulic Pellet Press, sample preparation tools, mull liquids, cells, windows and cell holders required for preparation and analysis of solid and liquid samples
181-1400	Pixie Hydraulic Pellet Press
Options and Replacement Parts	
161-1010	7-mm Die Set
161-1018	Single Pellet Holder for 7-mm pellets
161-1011	7-mm Collar
161-1020	7-mm Collar (10-pack)
160-8010	KBr Powder, 100 g
161-5035	Agate Mortar and Pestle, 35 mm
042-3035	Spatula – spoon
042-3050	Spatula – flat

SPECIFICATIONS

	Metric	English
Ram Force, Max	2.3 metric tons	2.5 tons
Platen Diameter	20.2 mm	0.8"
Die Height Range	22–39 mm	0.86–1.54"
Maximum Die Width	79 mm	3.11"
Mass	4.5 kg	10 lbs
Dimensions (W X D X H)		
	Metric	127 x 192 x 201 (min.) mm
	English	5.0 x 7.8 x 7.9 (min.)"

The comprehensive Pixie Package provides all necessary components to start making pellets in the lab. It includes a 7-mm die, two extra pellet collars, pellet holder, pestle and mortar set, KBr powder and spatula. All die components are made of hardened stainless steel and the parallel surfaces that come in contact with the sample are highly polished for obtaining optimal pellet quality.



Spectrum of calcium oxalate hydrate; KBr pellet made with Pixie Press.

Premium Sampling Kit

AT A GLANCE

- ▶ Complete kit for faster transmission FTIR sampling
- ▶ Make KBr pellets with Pixie, a compact hydraulic press
- ▶ Make mulls for solid samples
- ▶ Run liquid samples for qualitative and quantitative analysis

All the tools you need to prepare your liquid and solid samples for transmission measurements.

The Premium kit includes Pixie, a small bench top hydraulic press for the easy preparation of 7-mm KBr pellets, and Nujol™/Fluorolube® for mull making – another popular method for preparation of solid samples. For liquid analysis, a complete demountable cell with a set of spacers ranging from 15 microns to 1 mm is provided. Viscous liquids can be measured directly as a thin film between the KBr windows. Also included are PIKE's most popular sample holders: the universal holder with a 20-mm aperture, KBr pellet holders and PIKE disposable/storage cardboard cards for pellets and polymer films.

PART NUMBER	DESCRIPTION
162-1010	Premium Transmission Sampling Kit
Included Parts and Materials	
160-8010	KBr Powder, 100 g
161-0510	Fluorolube, 1 oz
161-0500	Nujol, 1 oz
042-3035	Spatula, spoon
042-3050	Spatula, flat
161-5030	Mortar and Pestle, 35 mm
181-1400	Pixie Hydraulic Pellet Press
161-1010	7-mm Die Set
161-1011	7-mm Collar
161-1018	KBr Pellet Holder
161-6000	Finger Cots (12 ea.)
162-1100	Demountable Liquid Cell Assembly
160-1010	KBr Window, 32 x 3 mm (6 ea.)
160-1015	KBr Window, 32 x 3 mm, drilled (6 ea.)
162-1290	Teflon Spacers, assortment
161-0521	Syringe, 2 mL (2 ea.)
162-3610	Press-On Demountable Liquid Cell Holder for 32-mm windows
162-5600	Universal Sample Holder*
162-5300	Magnetic Film Holder for 13-mm pellets and film samples
162-5400	Film Sampling Card, 20-mm clear aperture (10 ea.)*

Note: Cell holders marked "*" fit all standard slide mounts, but due to their height may not allow for a complete sample compartment door closure on some smaller spectrometers. Please consult PIKE Technologies before placing an order.

