

# GoBio Mini Screening kits

GoBio Mini Screening kits are products for fast and easy screening of optimal selectivity and to find optimal running conditions in a reliable and convenient way.

Depending on purification scale when the optimal resin has been found for the specific target it is easy to continue using individual GoBio Mini columns or to scale-up using a larger column in the prepacked GoBio column family. Another possibility is to use bulk resin and pack a column of choice.



## GoBio Mini NTA His-tag Screening kits

Includes one 1 mL or one 5 mL of each: GoBio Mini Ni-NTA, GoBio Mini Co-NTA, GoBio Mini Cu-NTA and GoBio Mini Zn-NTA.

- Easy screening for optimized purity of His-tagged proteins
- Prepacked with WorkBeads 40 Ni-NTA, WorkBeads 40 Co-NTA, WorkBeads 40 Cu-NTA and WorkBeads 40 Zn-NTA



## GoBio Mini IDA His-tag Screening kits

Includes one 1 mL or one 5 mL of each: GoBio Mini Ni-IDA, GoBio Mini Co-IDA, GoBio Mini Cu-IDA and GoBio Mini Zn-IDA.

- Easy screening for optimized purity of His-tagged proteins
- Prepacked with WorkBeads 40 Ni-IDA, WorkBeads 40 Co-IDA, WorkBeads 40 Cu-IDA and WorkBeads 40 Zn-IDA



## GoBio Mini IEX Screening kit

Includes one 1 mL of each: GoBio Mini S, GoBio Mini Q, GoBio Mini DEAE and GoBio Mini TREN.

- Easy screening for optimal running conditions and selectivity
- Prepacked with WorkBeads 40S, WorkBeads 40Q, WorkBeads 40 DEAE and WorkBeads 40 TREN
- High binding capacity even at high flow rates



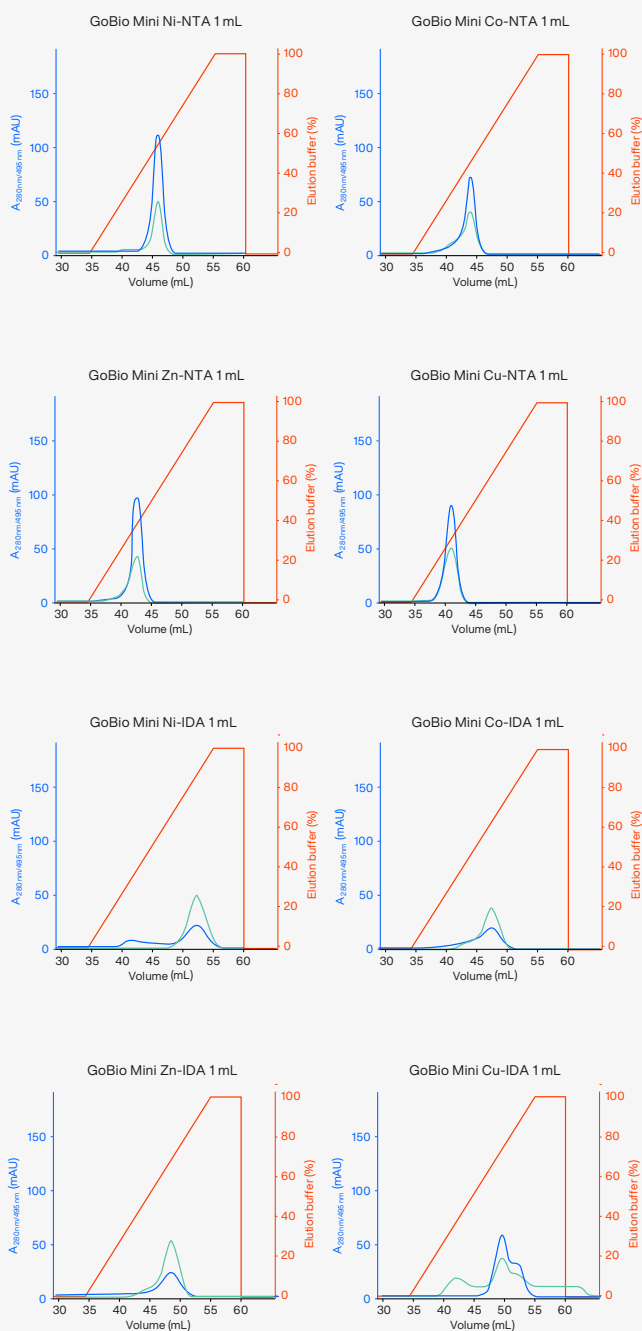
## GoBio Mini Peptide Purification kit

Includes one 1 mL of each: GoBio Mini S and GoBio Mini Q.

- Fast screening for optimal peptide purifications
- Prepacked with WorkBeads 40S and WorkBeads 40Q
- Easy screening for optimal running conditions
- High binding capacity even at high flow rates

# Applications

|                 |  |
|-----------------|--|
| Columns:        | GoBio Mini Ni-NTA 1 mL, GoBio Mini Co-NTA 1 mL, GoBio Mini Zn-NTA 1 mL, GoBio Mini Cu-NTA 1 mL, GoBio Mini Ni-IDA 1 mL, GoBio Mini Co-IDA 1 mL, GoBio Mini Zn-IDA 1 mL, GoBio Mini Cu-IDA 1 mL |
| Binding buffer: | 50 mM sodium phosphate, 300 mM NaCl, 10 mM imidazole, pH 8.0   |
| Elution buffer: | 50 mM sodium phosphate, 300 mM NaCl, 300 mM imidazole, pH 8.0  |
| Sample:         | 10 mL clarified extract with His <sub>6</sub> -tagged Green Fluorescent Protein (His <sub>6</sub> -GFP) expressed in <i>E. coli</i>  |
| Flow rate:      | 1 mL/min (150 cm/h)  |
| Gradient:       | 0–100% elution buffer, 20 CV   |



Comparison of purifications of His<sub>6</sub>-GFP on GoBio Mini NTA 1 mL and GoBio Mini IDA 1 mL precharged with Ni<sup>2+</sup>, Co<sup>2+</sup>, Cu<sup>2+</sup> and Zn<sup>2+</sup>.

Blue line: absorbance at 280 nm. Green line: absorbance at 495 nm (specific for His<sub>6</sub>-GFP). Red line: elution buffer, %.

# Ordering information

| Product name   | Pack size | Article number |
|--|-----------|----------------|
| GoBio Mini NTA His-tag Screening kit 1 mL <sup>1</sup> | 1 mL × 4  | 45 700 101     |
| GoBio Mini NTA His-tag Screening kit 5 mL <sup>1</sup> | 5 mL × 4  | 45 700 102     |
| GoBio Mini IDA His-tag Screening kit 1 mL <sup>1</sup> | 1 mL × 4  | 45 700 001     |
| GoBio Mini IDA His-tag Screening kit 5 mL <sup>1</sup> | 5 mL × 4  | 45 700 002     |
| GoBio Mini IEX Screening kit <sup>2</sup>              | 1 mL × 4  | 45 900 001     |
| GoBio Mini Peptide Purification kit <sup>3</sup>       | 1 mL × 2  | 45 300 102     |

<sup>1</sup> Includes one column each precharged with Ni<sup>2+</sup>, Co<sup>2+</sup>, Cu<sup>2+</sup> or Zn<sup>2+</sup>.

<sup>2</sup> Includes one 1 mL column of each: GoBio Mini S, GoBio Mini Q, GoBio Mini DEAE, GoBio Mini TREN.

<sup>3</sup> Bundle of: GoBio Mini S 1 mL × 1 and GoBio Mini Q 1 mL × 1.

## More information

### Data Sheet, DS 40 650 010

WorkBeads 40 Ni-NTA, WorkBeads 40 Co-NTA, WorkBeads 40 Zn-NTA, WorkBeads 40 Cu-NTA, WorkBeads 40 Ni-IDA, WorkBeads 40 Co-IDA, WorkBeads 40 Zn-IDA, WorkBeads 40 Cu-IDA, GoBio Mini NTA His-tag Screening kit, GoBio Mini IDA His-tag Screening kit, GoBio prepacked columns

→ [bio-works.com/product/imac-resin](https://bio-works.com/product/imac-resin)

### Data Sheet, DS 40 100 010

WorkBeads 40S, WorkBeads 40Q, WorkBeads 40 DEAE, GoBio Mini IEX Screening Kit, GoBio Mini Peptide Purification Kit, GoBio prepacked columns

→ [bio-works.com/product/iex-resin](https://bio-works.com/product/iex-resin)

