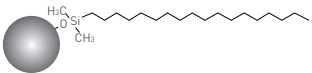


# Welchrom® Seires HPLC Column

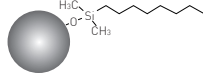
-- Combination of perfect peak shape and lowest back pressure

- Perfect peak shape and low back pressure
- Ultra-high purity(>99.999%) Type B silica particles
- New bonding and endcapping technique
- Economically priced

## Welchrom® C18

Structural Formula	
pH Range	1.5-10.0
Particle Size	5 µm
Surface Area(m <sup>2</sup> /g)	320(120 Å)
Carbon Loading(%)	19(120 Å)
USP List	L1
Endcapped	Yes

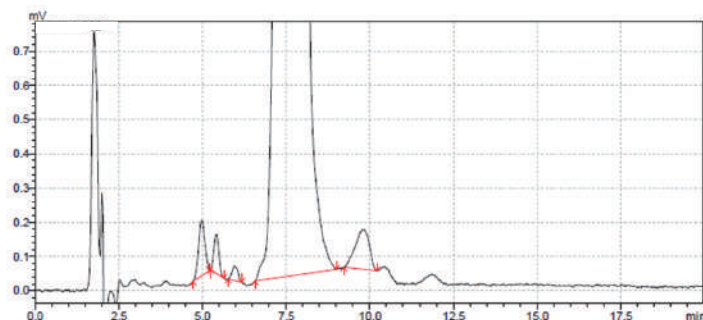
## Welchrom® C8

Structural Formula	
pH Range	1.5-10
Particle Size	5 µm
Surface Area(m <sup>2</sup> /g)	320(120 Å)
Carbon Loading(%)	12(120 Å)
USP List	L7
Endcapped	Yes

## Comparison with other brands

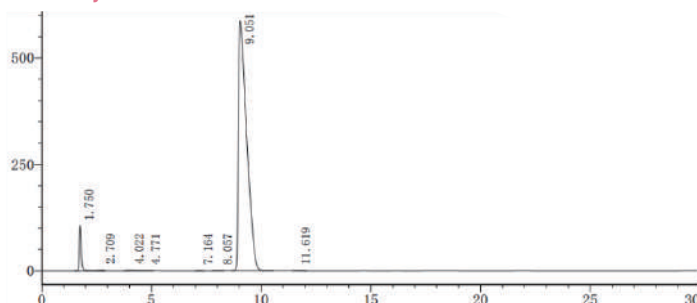
Brands	Tailing factor(amitriptyline)	Back pressure(Methanol/H <sub>2</sub> O)=75/25
Welchrom® XB-C18	1.29	77 bar
Chrom C18	1.52	108 bar
Sino Chrom C18	1.71	106 bar
BinChrom C18	1.67	102 bar

## Butenafine HCL



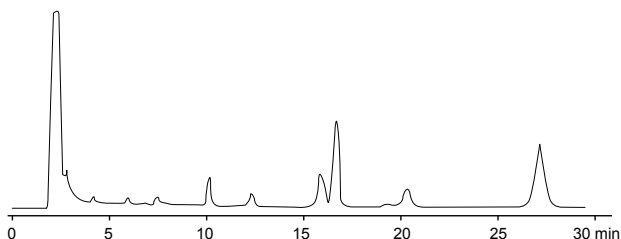
Column:	Welchrom® C18, 4.6x250 mm, 5 µm
Mobile Phase:	Acetate buffer/methanol/ isopropanol=17/70/13
Flow Rate:	1.0 mL/min
Temperature:	Ambient
Detector:	282 nm
Injection Volume:	10 µL

## Pentoxiverine citrate



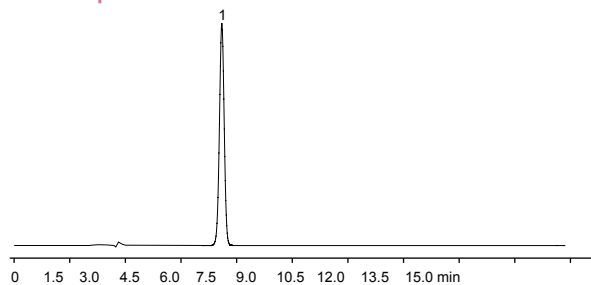
Column:	Welchrom® C18, 4.6x150 mm, 5 µm
Mobile Phase:	Water*/methanol=45/55 * Dilute 10 mL triethylamine to 1000 mL, adjust pH 3.0 with H <sub>3</sub> PO <sub>4</sub>
Flow Rate:	1.0 mL/min
Temperature:	30°C
Detector:	215 nm
Injection Volume:	20 µL

### Tanshinone IIA in *Salvia Miltiorrhiza*



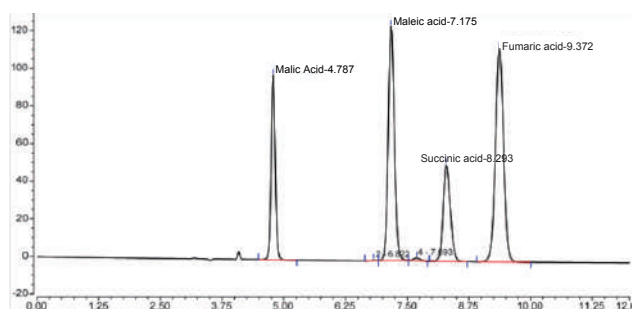
<b>Column:</b>	Welchrom® C18, 4.6x250 mm, 5 µm
<b>Mobile Phase:</b>	Methanol/water=75/25
<b>Flow Rate:</b>	1.0 mL/min
<b>Temperature:</b>	22°C
<b>Detector:</b>	270 nm

### Imidacloprid



<b>Column:</b>	Welchrom® C18, 250x4.6 mm, 5 µm
<b>Mobile Phase:</b>	Methanol/water=45/55
<b>Flow Rate:</b>	1.0 mL/min
<b>Temperature:</b>	25°C
<b>Detector:</b>	260 nm

### Malic acid



<b>Column:</b>	Welchrom® C8, 4.6x250 mm, 5 µm
<b>Mobile Phase:</b>	Phosphoric acid/methanol/water=1/100/900
<b>Flow Rate:</b>	0.8 mL/min
<b>Temperature:</b>	20°C
<b>Detector:</b>	214nm
<b>Injection Volume:</b>	5 µL

### Ordering Information

#### 5 µm Welchrom Analytical Column

Bonded phase	Column ID (mm)	Column Length (mm)										Guard Cartridge	Cartridge holder
		30	50	75	100	125	150	200	250	300	10mm length		
C18	2.1	00310-02009	00310-02010	00310-02011	00310-02012	00310-02013	00310-02014	00310-02015	00310-02016	-	00808-24201	00808-01107	
	3.0	00310-02018	00310-02019	00310-02020	00310-02021	00310-02022	00310-02023	00310-02024	00310-02025	-	00808-24201	00808-01107	
	4.0	00310-02027	00310-02028	00310-02029	00310-02030	00310-02031	00310-02032	00310-02033	00310-02034	00310-02035	00808-04201	00808-01101	
	4.6	00310-02036	00310-02037	00310-02038	00310-02039	00310-02040	00310-02041	00310-02042	00310-02043	00310-02044	00808-04210	00808-01101	
C8	2.1	00320-02009	00320-02010	00320-02011	00320-02012	00320-02013	00320-02014	00320-02015	00320-02016	-	00808-24202	00808-01107	
	3.0	00320-02018	00320-02019	00320-02020	00320-02021	00320-02022	00320-02023	00320-02024	00320-02025	-	00808-24202	00808-01107	
	4.0	00320-02027	00320-02028	00320-02029	00320-02030	00320-02031	00320-02032	00320-02033	00320-02034	00320-02035	00808-04202	00808-01101	
	4.6	00320-02036	00320-02037	00320-02038	00320-02039	00320-02040	00320-02041	00320-02042	00320-02043	00320-02044	00808-04202	00808-01101	

Don't see your needed size or format? Contact Welch or your local distributor for other dimensions.