



Sepax Technologies

立行科技總代理

專業管柱銷售

LINE Official Account

**好友
募集中**

@analab

凡LINE好友請來
查詢各公司最新資訊

台北市長安東路2段181號6樓之2

E-MAIL: SALES@ANALAB.COM.TW

網址: WWW.ANALAB.COM.TW

TEL: (02) 2776-6931

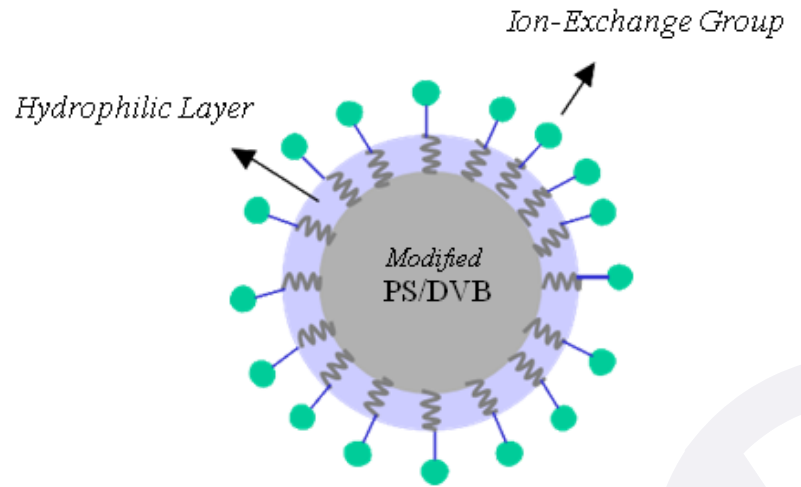
TEL: (04) 2235-2646

Proteomix IEX

離子交換管柱管柱

產品特點

- 1.無孔洞設計減少樣品的擴散效應
- 2.優異的分離效率、選擇性和分辨力
- 3.分析,半製備和製備分離的完整選擇
- 4.高穩定性&高回收率
- 5.非常適合 UPLC 系統



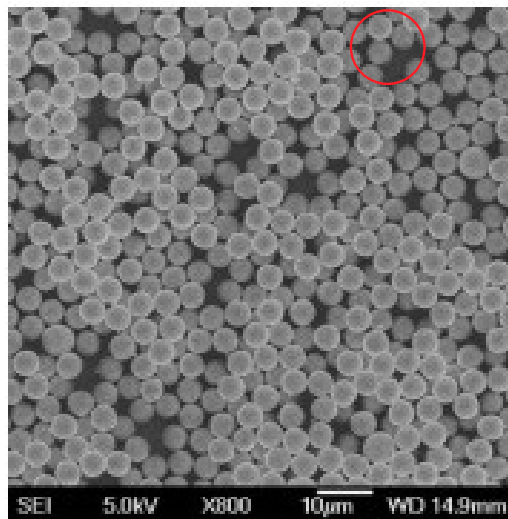
離子官能基搭配親水性塗層,使其非常適合用來分析 peptides, carbohydrates and glycans, proteins, polynucleotides, cell lysates ...

產品規格

Products	Pore Size	Particle Size	Dynamic Binding Capacity	pH range
Proteomix SCX-NP1.7,NP3,NP5,NP10	Non-porous	1.7,3,5,10 μm	~60,54,38,and 20 mg/mL	2-12
Proteomix WCX-NP1.7,NP3,NP5,NP10	Non-porous	1.7,3,5,10 μm	~25,19,15,and 10 mg/mL	2-12
Proteomix SAX-NP1.7,NP3,NP5,NP10	Non-porous	1.7,3,5,10 μm	~43,35,28,and 17 mg/mL	2-12
Proteomix WAX-NP1.7,NP3,NP5,NP10	Non-porous	1.7,3,5,10 μm	~35,26,18,and 12 mg/mL	2-12

Proteomix IEX內部固定相材料

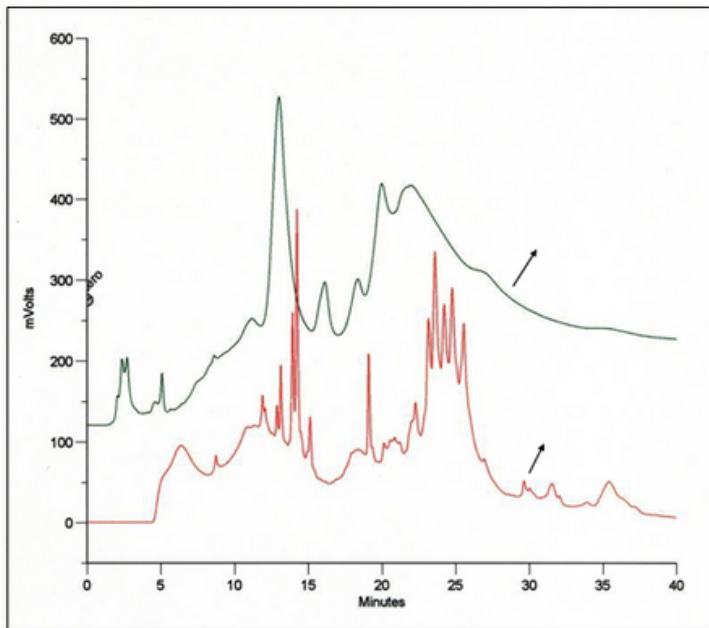
Phase	Proteomix [®] SCX, WCX
Dimensions	4.6 x 100 mm
Material	Non-porous PS/DVB beads grafted with a highly hydrophilic, neutral polymer thin layer.
Maximum temperature (°C)	~ 80
Mobile phase compatibility	Aqueous or a mixture of water and acetonitrile, acetone, or methanol



優越的合成技術,確定基材的球體大小一致,提供更好的分析效果

Protein Mixture from horse

離子交換管柱管柱



Column:

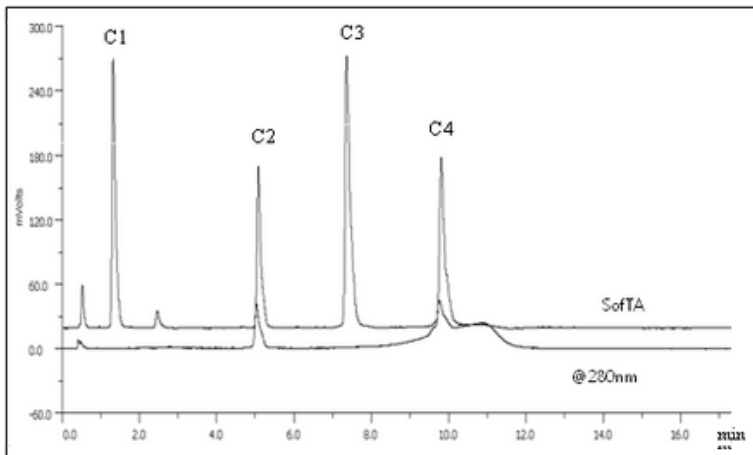
(1) **Non porous** Proteomix SAX-NP5 (5 μ m, 4.6x150mm)
 (2) **Porous** SAX Column (5 μ m, 4.6x150 mm)

Mobile phase:

(A) 25 mM Tris acetate, pH 7.3
 (B) A + 0.8 M sodium acetate
 Gradient: 0-50%-70%B (0-25-28 min)
 Flow rate:
 0.5 mL/min for SAX-NP5
 1.0 mL/min for Porous SAX
 UV Detection: 280nm

無孔洞設計提供更好的分析結果

Peptides C1, C2, C3



Column: Proteomix SCX-NP3 (3 μ m, 4.6x50 mm)

Mobile phase:

A, 5 mM CH₃COONH₄:CH₃CN=4:1 (V/V)
 B, 500 mM CH₃COONH₄:CH₃CN=4:1 (v/v)
 Gradient: 0-50%B (20 min)
 Flow rate: 0.6 mL/min
 Temperature: 25°C
 Detection: ELSD
 Injection: 5 μ L (0.1 mg/mL)

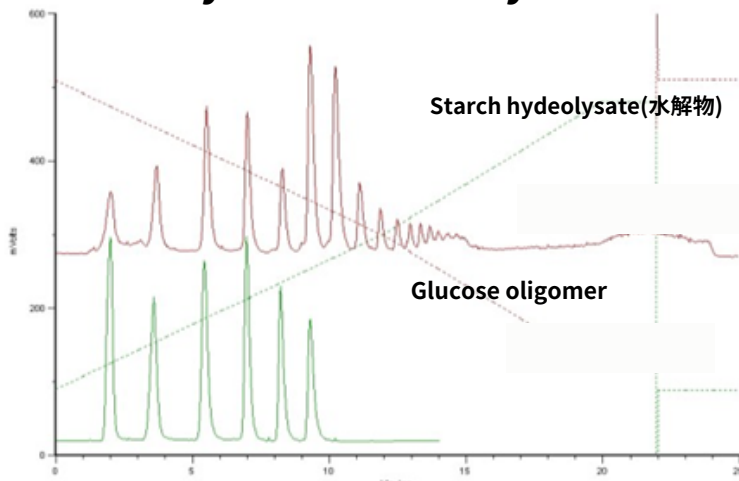
Sample:

Net charge

C1: Ac-Gly-Gly-Gly-Leu-Gly-Gly-Ala-Gly-Gly-Leu-Lys-amide +1
 C2: Ac-Lys-Tyr-Gly-Leu-Gly-Gly-Ala-Gly-Gly-Leu-Lys-amide +2
 C3: Ac-Gly-Gly-Ala-Leu-Lys-Ala-Leu-Lys-Gly-Leu-Lys-amide +3
 C4: Ac-Lys-Tyr-Ala-Leu-Lys-Ala-Leu-Lys-Gly-Leu-Lys-amide +4

結構相似的peptide也能成功分離

Carbohydrates and Glycans



Column:

Proteomix SA.X-NP5 (5 μ m, 4.6x150 mm)

Mobile phase:

A, 0.05% (25% NH₄OH) in CH₃CN
 B, 0.05% (25% NH₄OH) in HO
 Gradient: 15-80%B (20 min)

Flow rate: 0.7 mL/min

Sample: Corn starch hydrolysate

Temperature: 35°C

Detection: ELSD

更多應用資料請上立行官網

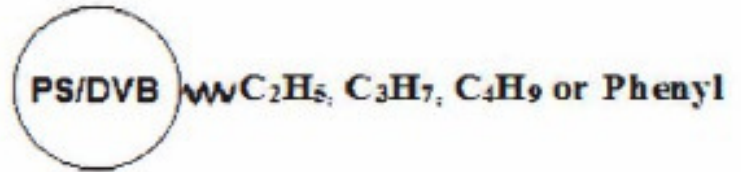
Google search : 立行科技 sepax

Proteomix HIC

疏水性生物樣品的專用管柱

產品特點

1. 高解析度以及高樣品負載能力
2. 蛋白質回收率高，生物活性完整
3. 高穩定性和批次間重現性
4. 耐高壓、耐高溫
5. 適用於分離和分析疏水性蛋白質、單克隆抗體及其衍生物（例如抗體藥物偶聯物）以及用聚合物支鏈衍生的有機分子



產品規格

Resin Matrix:	Spherical, highly cross-linked PS/DVB
Pore Size:	Nonporous
Particle Size:	1.7, 5 and 10 μm
Phase Structure:	Ethyl, Propyl, Butyl and Phenyl (5, 10 μm) Ethyl and Butyl (1.7 μm)
Separation Mechanism:	Hydrophobic interaction
pH Stability:	2-12
Operating Temperature:	Up to 80 °C
Operating Pressure:	6000 psi (5, 10 μm) 8000 psi (1.7 μm)
Mobile Phase Compatibility:	Compatible with aqueous solution, a mixture of water and acetonitrile, acetone, methanol, or THF

無孔洞合成技術,減少樣品的擴散效應

優異的耐壓能力

優越的溶劑耐受性,創造方法開發的無限可能

HIC 官能基中疏水親和力的比較

Ethyl < Propyl < Butyl < Phenyl

親水

疏水

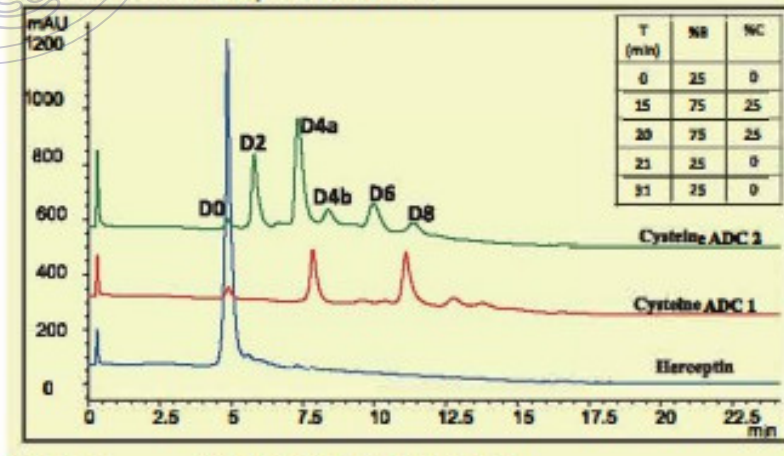
更多應用資料請上立行官網

Google search : 立行科技 sepax

Proteomix HIC

疏水性生物樣品的專用管柱

ADCs (Antibody Drug Conjugates)



高鹽類耐受性

Column: Proteomix HIC Butyl NP5 (5 μ m, 4.6 x 35 mm)
Mobile phase:

A: 2 M ammonium sulfate in 0.025 M sodium phosphate, pH 7.0

B: 0.025 M sodium phosphate, pH 7.0

C: 100%IPA

Flow rate: 0.8 mL/min

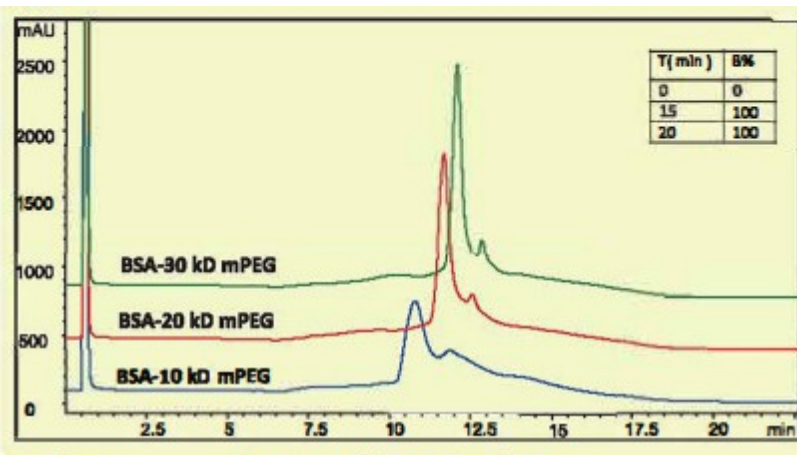
Detector: UV 214 nm

Temperature: 25 °C

Injection: 10 μ L

Sample: Herceptin/ADC1/ADC2, 1.0 mg/mL in 25 mM sodium phosphate

PEGylated Proteins



Column: Proteomix@ HIC Butyl NP5 (5 μ m, 4.6 x 35 mm)

Flow rate: 0.4 mL/min

Detector: UV 214 nm

Temperature: 25 °C

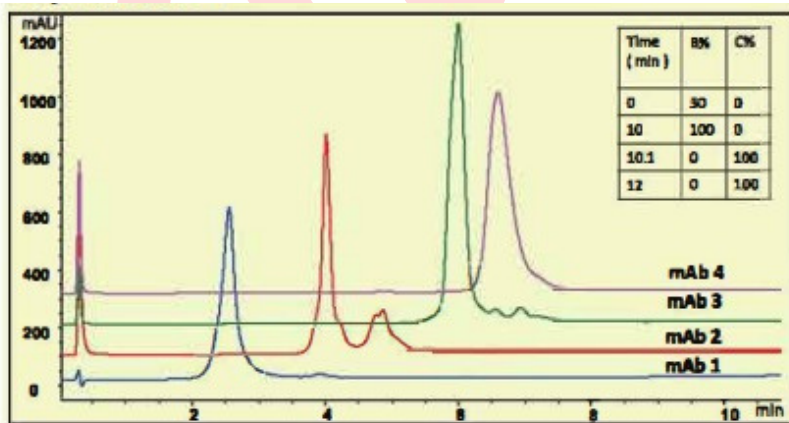
Mobile phase: A: 2 M ammonium sulfate in 0.025 M sodium phosphate, pH 7.0

B: 0.1 M sodium phosphate, pH 7.0

Sample: 10 kD, 20 kD and 30 kD PEGylated BSA diluted with mobile phase A

Injection: 20 μ L

Intact MAb (Monoclonal Antibodies)



Column: Proteomix@ HIC Butyl NP5 (5 μ m, 4.6 x 35 mm),

Flow rate: 1.0 mL/min

Detector: UV 214 nm

Temperature: 25 °C

Mobile phase:

A: 100 mM sodium phosphate buffer, 2 M ammonium sulfate, pH 7.0

B: 100 mM sodium phosphate buffer, pH 7.0

C: B + 1.0M NaCl

Injection: 15 μ g mAb samples

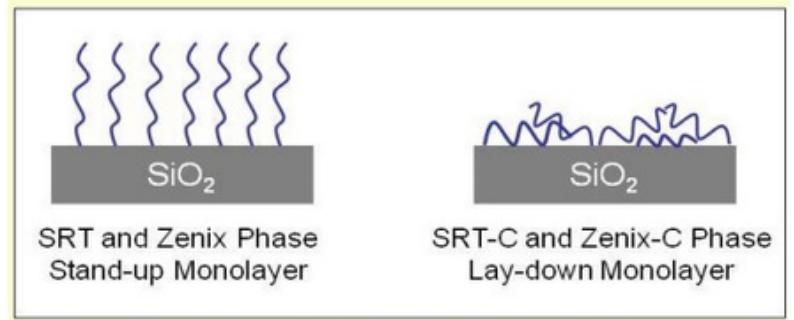
更多應用資料請上立行官網

Google search: 立行科技 sepx

產品特點

1. 高解析度以及高樣品負載能力
 2. 純化時提供高回收力
 3. 惰性表面減少與樣品發生反應
 4. 可廣泛用於生物性樣品的分析
 5. 特別適合用來分析疏水性的生物樣品
- Ex: **hydrophobic proteins** like insulin, membrane protein, monoclonal antibodies derivatized with polymer branches, e.g. polypeptide, PEG.

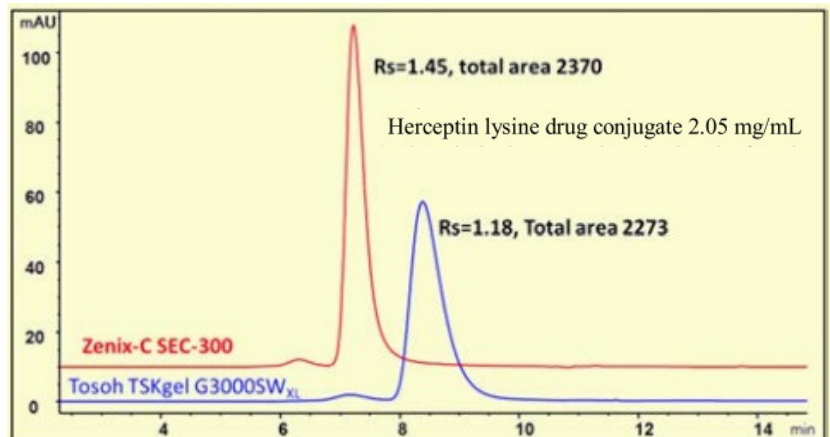
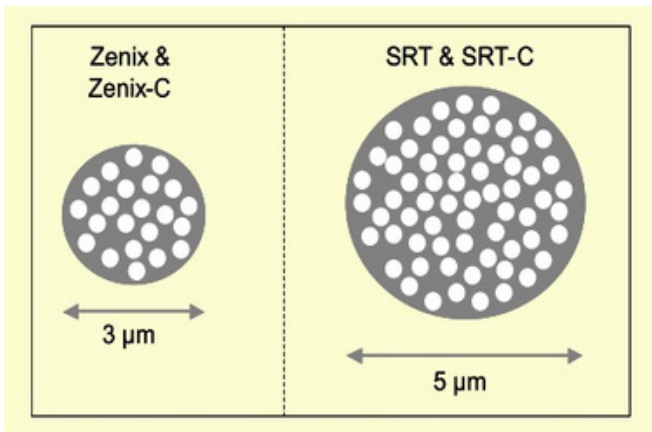
獨家特殊的表面修飾,特別適合用來分析疏水性的樣品



產品規格

Characteristics	SRT	Zenix	SRT-C	Zenix-C
Particle size	5 μm	3 μm	5 μm	3 μm
Pore size (Å)	100, 150, 300, 500, 1000 & 2000	80, 100, 150, 300	100, 150, 300, 500, 1000 & 2000	80, 100, 150, 300
Resolution	High	Higher, short column for faster separation	High	Higher, short column for faster separation
Surface structure	Chemically bonded stand-up monolayer		Chemically bonded lay-down monolayer	
Recommended Sample Types	Monoclonal antibodies, proteins, peptides, nucleic acids, oligonucleotides, virus, and water-soluble polymers		"Tough samples" such as hydrophobic samples like insulin, membrane protein, antibody drug conjugates, proteins conjugated with hydrophobic molecules.	

Herceptin Lysine ADC Analysis



3um的小孔徑提快速且卓越的分析效果

Column: **Zenix - C SEC-300** (3 μm , 300 Å, 7.8 x 300 mm) & **Tosoh TSKgel G3000SWXL** (5 μm , 250 Å, 7.8 x 300 mm)
 Mobile phase: 150 mM sodium phosphate buffer, pH 7.0 1 mL/min
 Detection: UV 280 nm
 Temperature: Ambient
 Injection: 10 μL
 Samples: Herceptin lysine drug conjugate 2.05 mg/mL
 Disclaimer: TSKgel and Tosoh Bioscience are registered trademarks of Tosoh Corporation; Comparative separations may not be representative of all applications.