

Jordi Reverse Phase and Normal Phase Columns

Jordi RP and NP columns represent over 25 years of continuous development effort and are some of the finest polymeric columns on the market today. Our extensive application database can, in many cases, provide an already established method for the analysis of your compound. Jordi polymeric columns offer significant advantages over silica phases for the analysis of:

- Polar compounds which are poorly retained by silica phases (carbohydrates, PEG)
- Very hydrophobic samples which have poor solubility in aqueous mobile phases
- Complex samples which require selectivity significantly different from silica phases
- Ionizable compounds for which extremes of pH allow ion suppression
- Separations in which retention is desirable at higher organic content

Jordi RP and NP columns offer significant advantages including:

- Wider range of surface chemistries than other polymer manufacturers
- Long column lifetimes
- pH 0-14 stable
- Compatible with nearly all solvents
- Multiple pore sizes (300Å, 500Å, and 10³Å)
- Highly retentive polymer phases
- 100% Carbon Loading

Jordi Reverse Phase

Jordi polymer based DVB resins are similar to phenyl silica phases but provide greater retention. Compared with C₁₈ silica phases, they show increased retention and different selectivity for many compounds. Our resins serve as a highly retentive phase allowing retention for compounds which elute in the void volume on most silica phases. Jordi Fluorinated RP DVB columns are the exception to this rule offering significantly lower retention resulting in elution of sample components at higher water concentrations. All Jordi RP columns are completely pH stable from 0-14 and compatible with nearly all solvents.

Because of the high surface area of the packing material, the addition of an organic solvent is required to elute most materials from the column. The highly cross-linked packing material does not restrict the choice of solvent; Acetic Acid, Formic Acid, Pyridine, Dimethyl Sulfoxide, Tetrahydrofuran and Acetone have all been used successfully. Jordi RP & NP columns are 100% carbon loaded, as opposed to silica columns, providing greatly increased sample loading capacity. Surface areas of up to 750 m²/g are available on Jordi resins.

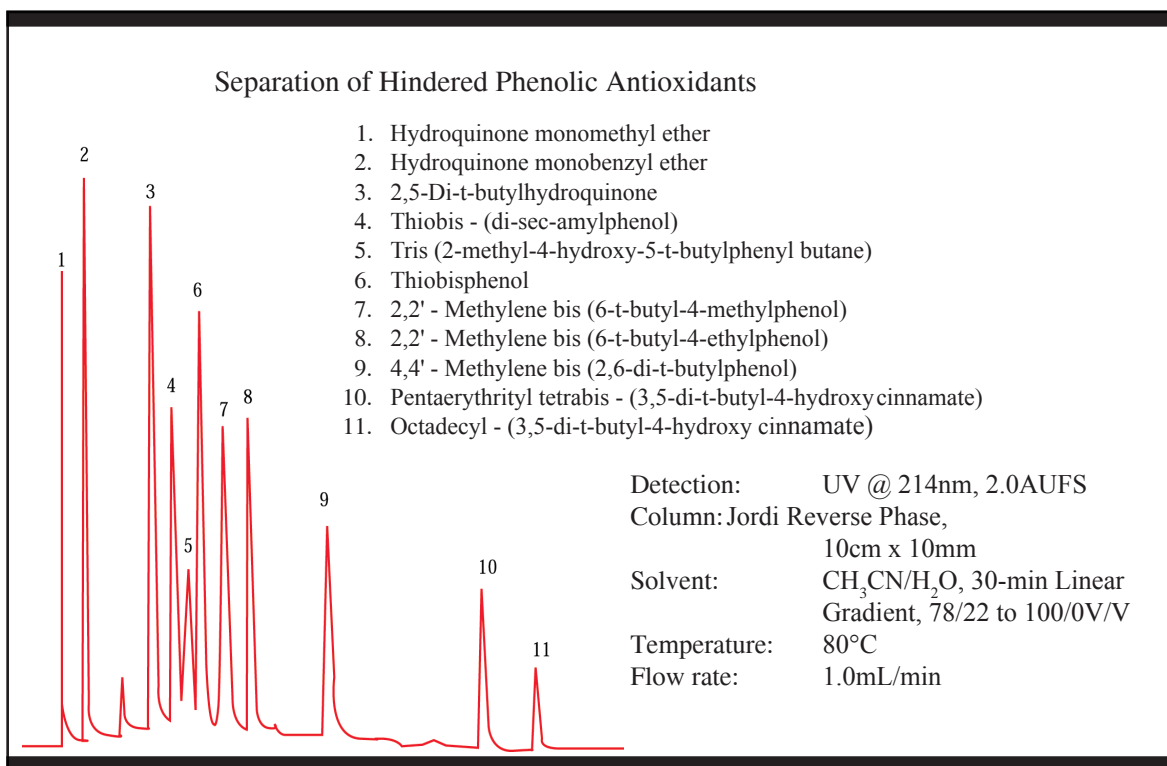
Jordi Reverse Phase Columns work extremely well with paired-ion techniques used to separate both organic and inorganic ions based on hydrophobicity of the packing material.

Jordi recommends a 10cm x 10mm ID column format for our RP columns. This size minimizes the shrinking and swelling effects of the packing when changing solvent polarities allowing a gradient run from a 100% aqueous buffer to 100% THF. Columns with standard 4.6mm ID are also available. Jordi RP columns with lengths of 10cm or greater require a small amount (5%) of an organic solvent to be used at all times to ensure against loss of efficiency due to bed shrinkage.

Featured Applications

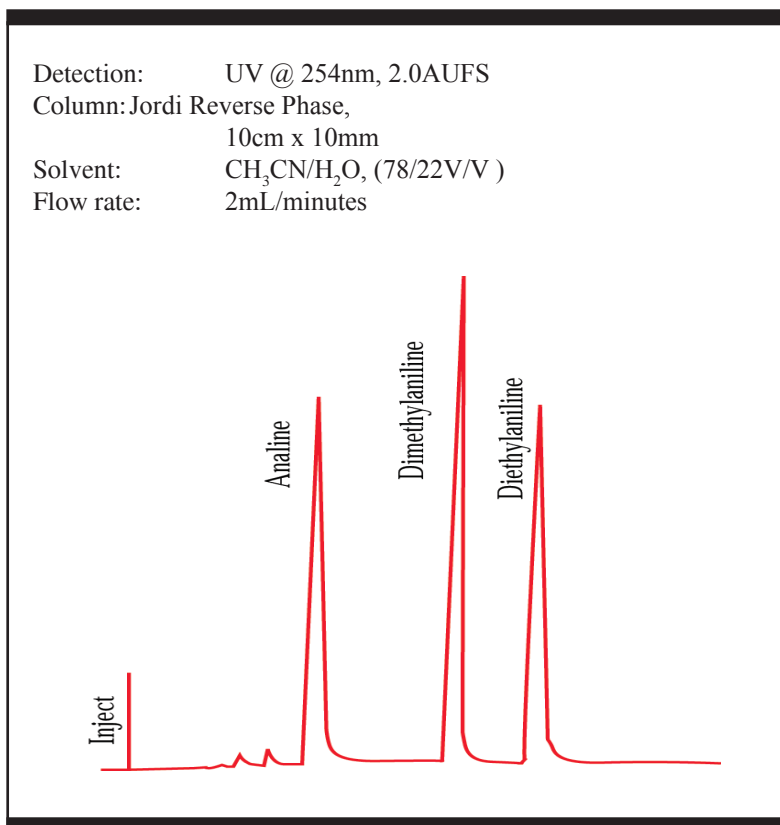
Separation of Hindered Phenolic Antioxidants

The separation of hindered phenolic antioxidants utilizes a linear gradient of acetonitrile from 78% to 100%. The column temperature was maintained at 80°C to ensure reasonable retention time and to enhance the selectivity of the column, as well as the solubility of the sample. The divinylbenzene polymer packing is highly cross-linked and is actually very stable at operating temperatures up to 150°C. The columns can be run for months at 150°C in Ethylene Glycol or Trichlorobenzene (TCB).



Separation of Aniline, Dimethylaniline and Diethylaniline

Most samples with basic characteristics elute well from the Jordi Reverse Phase columns as shown by the separation of aniline, dimethylaniline and diethylaniline. This separation displays good peak symmetry with almost no trace of tailing. If present, non-symmetric peak shapes can usually be corrected by the addition of a small amount of Triethylamine to the eluent.



Jordi RP & NP Method Development Kit

The Jordi method development kit includes five different stationary phases in an optimum size for rapid screening. All phases are based on our 100% divinylbenzene packings imparting higher strength and rigidity to the gels.

The Jordi RP & NP method development kit includes one each of the following 10cm x 4.6mm columns:

Jordi Method Development Kit					
Cat. #	Pore Size	Particle Size	Length	ID	Price
76000	500Å	5µ	10cm	4.6mm	\$1,495.00
Packing Media					
DVB RP • DVB C ₁₈ RP • DVB Glucose NP DVB Hydroxylated RP • DVB Fluorinated RP					



Core Values

Innovation -

A company which brings new technology into the marketplace and which embraces change.

To see the next Jordi core value turn to page 66.

Jordi DVB RP Columns

DVB RP columns are prepared from 100% divinylbenzene as opposed to the more common polystyrene divinylbenzene copolymers used by other column manufacturers. This unique chemistry imparts higher strength and rigidity to the gels due to the highly cross-linked structure. Jordi DVB RP columns are 100% carbon loaded as opposed to silica columns providing higher retention and greatly increased sample loading capacity.



Advantages of Jordi DVB RP Columns:

- Rugged - high temperature stable and virtually all organic solvents
- Solvents - can be changed without damaging the column
- Wide pH range - pH values from 0 to 14
- Efficient - high plate counts for sharp, symmetrical peaks
- Powerful - high pore-volume for greater resolution
- Long column life - 3 month warranty standard
- Range of Porosities - 300Å, 500Å, and 10³Å
- Easy Scale Up - 1" - 4" preparative columns available
- Quality - DVB RP columns have been in continuous production for over 25 years and are subjected to rigorous quality checks

Jordi DVB RP Applications and Solvents

Typical Applications:

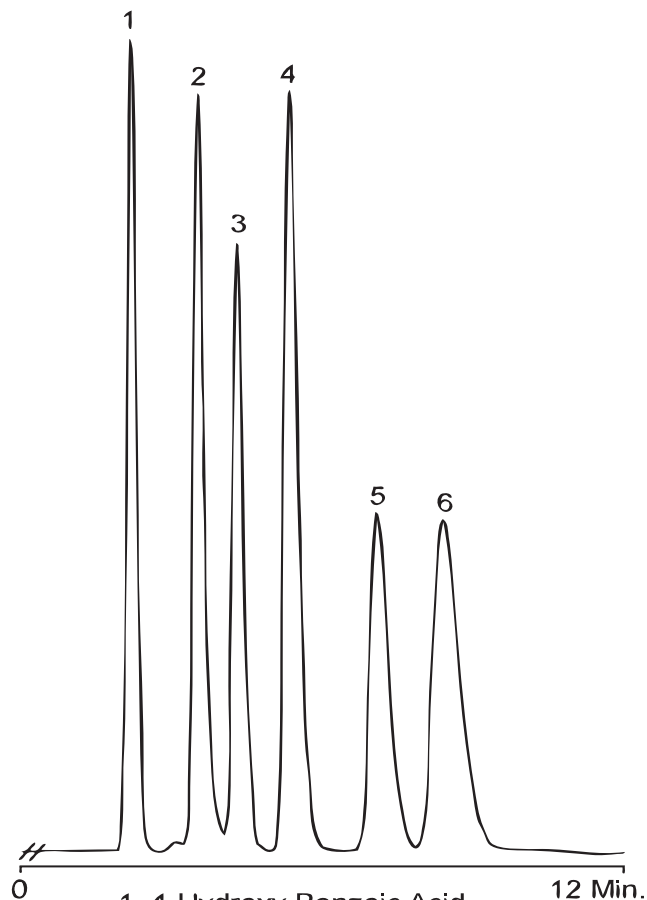
Alkaloid drugs
 Caffeine in Coffee
 PEG and PPG
 Slip agents
 Glycerol monoesters
 Hindered Phenolic Antioxidants

Typical Solvent Systems:

10/20/30/40 MeOH/THF/ACN/H₂O
 2-propanol
 H₂O/ACN/MeOH with 0.1% TFA

Select Jordi DVB RP Applications

ASPIRIN and RELATED COMPOUNDS

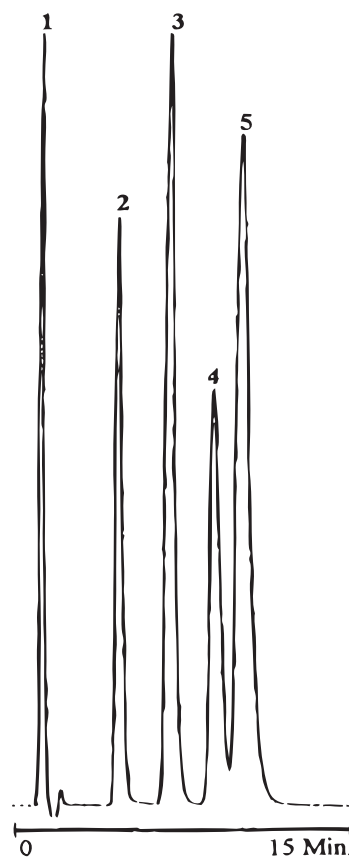


1. 4-Hydroxy Benzoic Acid
2. Acetylsalicylic Acid (Aspirin)
3. Phenacetin (p-Acetophenetidine)
4. Salicylic Acid
5. 5-Methyl Salicylic Acid
6. 3-Methyl Salicylic Acid

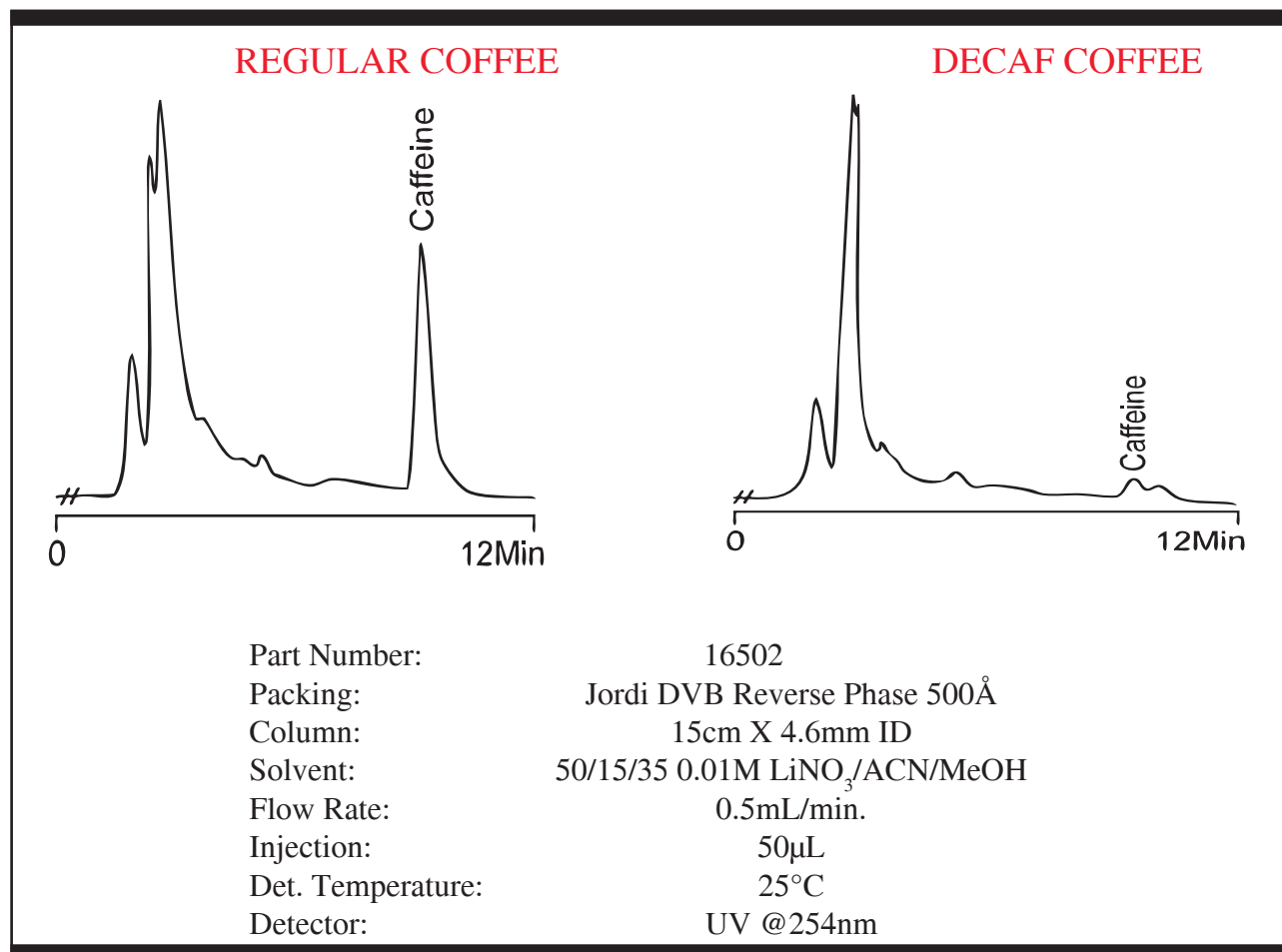
Part Number: 16002
 Packing: Jordi DVB RP 500Å
 Column: 10cm X 10mm ID
 Solvent: 50/50 ACN/H₂O w/0.05% TFA
 Flow Rate: 3.0mL/min
 Injection: 100µL
 Det. Temperature: 25°C
 Detector: UV @254nm

VASOCONSTRICTORS

1. Phenylephrine Hydrochloride
2. Norephedrine Hydrochloride
3. Procainamide Hydrochloride
4. Ephedrine Hydrochloride
5. Pseudoephedrine Hydrochloride



Part Number: 16002
 Packing: Jordi DVB RP 500Å
 Column: 10cm X 10mm ID
 Solvent: 24/74/2 ACN/0.2M NaOH/Butylamine
 Flow Rate: 3.0mL/min
 Injection: 100µL
 Det. Temperature: 25°C
 Detector: UV @254nm



Jordi Gel DVB RP Columns					
Cat. #	Pore Size	Particle Size	Length	ID	Price
16526	300Å	5µ	10cm	4.6mm	\$ 380.00
16501	300Å	5µ	15cm	4.6mm	\$ 435.00
16506	300Å	5µ	25cm	4.6mm	\$ 545.00
16001	300Å	5µ	10cm	10mm	\$ 545.00
16527	500Å	5µ	10cm	4.6mm	\$ 380.00
16502	500Å	5µ	15cm	4.6mm	\$ 435.00
16507	500Å	5µ	25cm	4.6mm	\$ 545.00
16002	500Å	5µ	10cm	10mm	\$ 545.00
16528	10 ³ Å	5µ	10cm	4.6mm	\$ 380.00
16503	10 ³ Å	5µ	15cm	4.6mm	\$ 435.00
16508	10 ³ Å	5µ	25cm	4.6mm	\$ 545.00
16003	10 ³ Å	5µ	10cm	10mm	\$ 545.00



Jordi Gel DVB RP Columns - Micro & Minibore					
<i>Cat. #</i>	<i>Pore Size</i>	<i>Particle Size</i>	<i>Length</i>	<i>ID</i>	<i>Price</i>
16516	300Å	5μ	5cm	2.1mm	\$ 435.00
16522	300Å	5μ	10cm	2.1mm	\$ 490.00
16517	500Å	5μ	5cm	2.1mm	\$ 435.00
16523	500Å	5μ	10cm	2.1mm	\$ 490.00
16518	10 ³ Å	5μ	5cm	2.1mm	\$ 435.00
16524	10 ³ Å	5μ	15cm	2.1mm	\$ 490.00

Jordi Gel DVB RP Columns - Semi Prep					
<i>Cat. #</i>	<i>Pore Size</i>	<i>Particle Size</i>	<i>Length</i>	<i>ID</i>	<i>Price</i>
16016	300Å	5μ	30cm	7.8mm	\$1,095.00
16010	300Å	5μ	25cm	10mm	\$1,095.00
16017	500Å	5μ	30cm	7.8mm	\$1,095.00
16011	500Å	5μ	25cm	10mm	\$1,095.00
16018	10 ³ Å	5μ	30cm	7.8mm	\$1,095.00
16012	10 ³ Å	5μ	25cm	10mm	\$1,095.00

Jordi Gel DVB RP Columns - Prep 1" OD					
<i>Cat. #</i>	<i>Pore Size</i>	<i>Particle Size</i>	<i>Length</i>	<i>ID</i>	<i>Price</i>
16021	300Å	5μ	10cm	22mm	\$1,095.00
16121	300Å	5μ	25cm	22mm	\$2,745.00
16131	300Å	5μ	50cm	22mm	\$3,845.00
16022	500Å	5μ	10cm	22mm	\$1,095.00
16122	500Å	5μ	25cm	22mm	\$2,745.00
16132	500Å	5μ	50cm	22mm	\$3,845.00
16023	10 ³ Å	5μ	10cm	22mm	\$1,095.00
16123	10 ³ Å	5μ	25cm	22mm	\$2,745.00
16133	10 ³ Å	5μ	50cm	22mm	\$3,845.00

Jordi Gel DVB RP Columns - Prep 2" OD					
<i>Cat. #</i>	<i>Pore Size</i>	<i>Particle Size</i>	<i>Length</i>	<i>ID</i>	<i>Price</i>
16301	300Å	10μ	10cm	50mm	\$ 5,489.00
16321	300Å	10μ	25cm	50mm	\$ 9,889.00
16331	300Å	10μ	50cm	50mm	\$15,389.00
16302	500Å	10μ	10cm	50mm	\$ 5,489.00
16322	500Å	10μ	25cm	50mm	\$ 9,889.00
16332	500Å	10μ	50cm	50mm	\$15,389.00
16303	10 ³ Å	10μ	10cm	50mm	\$ 5,489.00
16323	10 ³ Å	10μ	25cm	50mm	\$ 9,889.00
16333	10 ³ Å	10μ	50cm	50mm	\$15,389.00

Jordi DVB C₁₈ RP Columns

DVB C18 columns are prepared by bonding octadecylamine to our 100% divinylbenzene polymer phase. This unique chemistry imparts higher strength and rigidity to the gels due to the highly cross-linked structure. Jordi DVB C18 RP columns are 100% carbon loaded as opposed to silica columns providing greatly increased sample loading capacity. Selectivity is similar to C18 silica-based columns with slightly weaker retention as compared to Jordi DVB columns. Mixed-mode separations can be accomplished in acidic solutions by forming a positive charge on the amine group.



Advantages of Jordi DVB C₁₈ RP Columns:

- Rugged - high temperature stable and nearly all organic solvents
- Solvents - can be changed without damaging the column
- Wide pH range - pH values from 0 to 14
- Efficient - high plate counts for sharp, symmetrical peaks
- Powerful - high pore-volume for greater resolution
- Long column life - 3 month warranty standard
- Quality - subjected to rigorous quality checks

Jordi Gel DVB C₁₈ Applications and Solvents

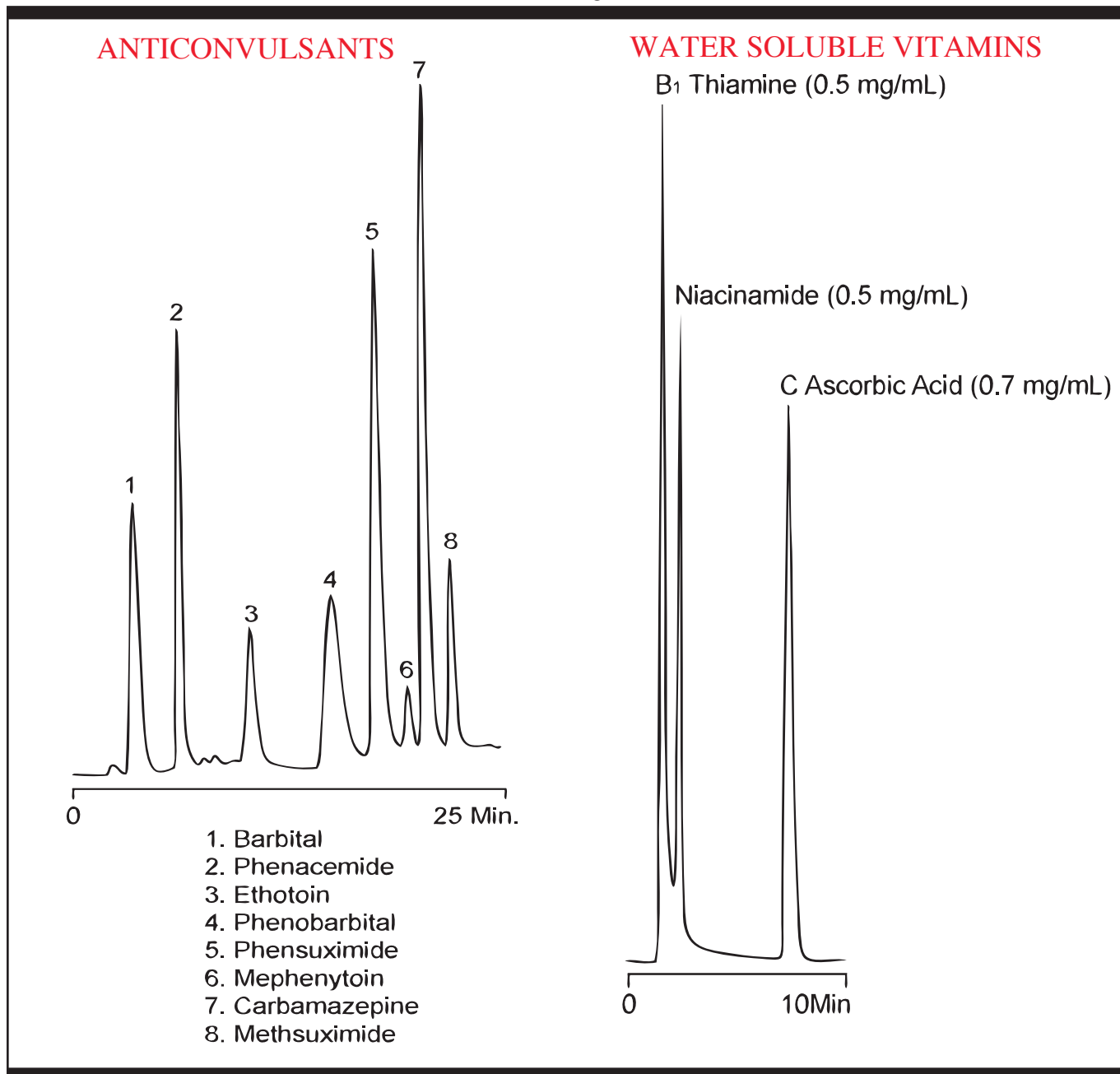
Typical Applications:

Monophosphate nucleotides
 Fat Soluble Vitamins
 Choline compounds
 Anticonvulsants
 Fatty Acids
 Aspirin

Typical Solvent Systems:

ACN & .1% TFA
 50/25/25 - H₂O/MeOH/ACN
 NaH₂PO₄/ACN/Butylamine

Select Jordi DVB C₁₈ RP Applications



Part Number:

18500

18500

Packing:

DVB C₁₈ 500Å

Jordi DVB C₁₈ 500Å

Column:

15cm X 4.6mm ID

15cm X 4.6mm ID

Solvent A:

H₂O

50/40/10 H₂O/ACN/MeOH

Solvent B:

87.5/12.5 ACN/MeOH pH 4.0 w/ CH₃COOH

Flow Rate:

0.7mL/min.

0.7mL/min.

Injection:

20µL

15µL

Det. Temperature:

25°C

25°C

Detector:

UV @215nm

UV @246nm

JORDI

Jordi Gel DVB C ₁₈ RP Columns					
<i>Cat. #</i>	<i>Pore Size</i>	<i>Particle Size</i>	<i>Length</i>	<i>ID</i>	<i>Price</i>
18503	500Å	5μ	10cm	4.6mm	\$ 435.00
18500	500Å	5μ	15cm	4.6mm	\$ 545.00
18501	500Å	5μ	25cm	4.6mm	\$ 655.00
18502	500Å	5μ	10cm	10mm	\$ 655.00

Jordi Gel DVB C ₁₈ RP Columns - Mini & Microbore					
<i>Cat. #</i>	<i>Pore Size</i>	<i>Particle Size</i>	<i>Length</i>	<i>ID</i>	<i>Price</i>
18530	500Å	5μ	5cm	2.1mm	\$ 435.00
18531	500Å	5μ	10cm	2.1mm	\$ 468.00

Jordi Gel DVB C ₁₈ RP Columns - Semi Prep					
<i>Cat. #</i>	<i>Pore Size</i>	<i>Particle Size</i>	<i>Length</i>	<i>ID</i>	<i>Price</i>
18016	500Å	5μ	30cm	7.8mm	\$1,205.00
18010	500Å	5μ	25cm	10mm	\$1,205.00

Jordi Gel DVB C ₁₈ RP Columns - Prep					
<i>Cat. #</i>	<i>Pore Size</i>	<i>Particle Size</i>	<i>Length</i>	<i>ID</i>	<i>Price</i>
18020	500Å	5μ	10cm	22mm	\$1,315.00
18021	500Å	5μ	25cm	22mm	\$3,075.00

Specialty columns and packings are available on request. Please contact us for pricing.

Core Values

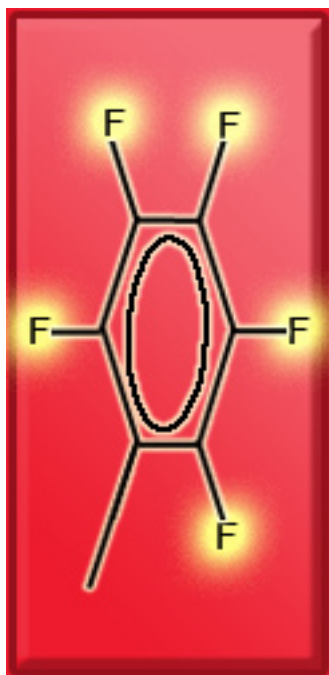
Teamwork -

We succeed when we work as a group. We grow when we share what we learn with one another.

To see the next Jordi core value turn to page 74.

Jordi DVB Fluorinated RP columns

The patent pending DVB Fluorinated RP columns have a pentafluorophenyl group attached to the surface of our 100% divinylbenzene packing. They are 100% carbon loaded as opposed to silica columns providing greatly increased sample loading capacity. The Fluorinated phase is much less retentive than standard Jordi DVB RP packings requiring less organic in the mobile phase for elution.



Advantages of Jordi DVB Fluorinated RP columns:

- Selective - fluorinated surface for fluorine interactions
- Solvents - can be changed without damaging the column
- Wide pH Range - pH values from 0 to 14
- Efficient - high plate counts for sharp, symmetrical peaks
- Powerful - high pore-volume for greater resolution
- Long column life - 3 month standard warranty
- Quality - subjected to rigorous quality checks

Jordi Gel DVB Fluorinated RP Columns					
<i>Cat. #</i>	<i>Pore Size</i>	<i>Particle Size</i>	<i>Length</i>	<i>ID</i>	<i>Price</i>
90360	300Å	5µ	10cm	4.6mm	\$ 434.50
90350	300Å	5µ	15cm	4.6mm	\$ 544.50
90340	300Å	5µ	25cm	4.6mm	\$ 654.50
90370	300Å	5µ	10cm	10mm	\$ 654.50
90361	500Å	5µ	10cm	4.6mm	\$ 434.50
90351	500Å	5µ	15cm	4.6mm	\$ 544.50
90341	500Å	5µ	25cm	4.6mm	\$ 654.50
90371	500Å	5µ	10cm	10mm	\$ 654.50
90362	10 ³ Å	5µ	10cm	4.6mm	\$ 434.50
90352	10 ³ Å	5µ	15cm	4.6mm	\$ 544.50
90342	10 ³ Å	5µ	25cm	4.6mm	\$ 654.50
90372	10 ³ Å	5µ	10cm	10mm	\$ 654.50

Jordi Gel DVB Fluorinated RP Columns - Micro & Minibore					
<i>Cat. #</i>	<i>Pore Size</i>	<i>Particle Size</i>	<i>Length</i>	<i>ID</i>	<i>Price</i>
90306	300Å	5μ	5cm	2.1mm	\$ 434.50
90059	300Å	5μ	10cm	2.1mm	\$ 467.50
90307	500Å	5μ	5cm	2.1mm	\$ 434.50
90068	500Å	5μ	10cm	2.1mm	\$ 467.50
90308	10 ³ Å	5μ	5cm	2.1mm	\$ 434.50
90069	10 ³ Å	5μ	10cm	2.1mm	\$ 467.50

Jordi Gel DVB Fluorinated RP Columns - Semi Prep					
<i>Cat. #</i>	<i>Pore Size</i>	<i>Particle Size</i>	<i>Length</i>	<i>ID</i>	<i>Price</i>
90316	300Å	5μ	30cm	7.8mm	\$1,155.00
90311	300Å	5μ	25cm	10mm	\$1,155.00
90317	500Å	5μ	30cm	7.8mm	\$1,155.00
90312	500Å	5μ	25cm	10mm	\$1,155.00
90318	10 ³ Å	5μ	30cm	7.8mm	\$1,155.00
90313	10 ³ Å	5μ	25cm	10mm	\$1,155.00

Jordi Gel DVB Fluorinated RP Columns - Prep					
<i>Cat. #</i>	<i>Pore Size</i>	<i>Particle Size</i>	<i>Length</i>	<i>ID</i>	<i>Price</i>
90321	300Å	5μ	10cm	22mm	\$1,314.50
90326	300Å	5μ	25cm	22mm	\$3,074.50
90322	500Å	5μ	10cm	22mm	\$1,314.50
90327	500Å	5μ	25cm	22mm	\$3,074.50
90323	10 ³ Å	5μ	10cm	22mm	\$1,314.50
90328	10 ³ Å	5μ	25cm	22mm	\$3,074.50

Specialty columns and packings are available on request. Please tcontact us for pricing.

Jordi DVB Hydroxylated RP Columns

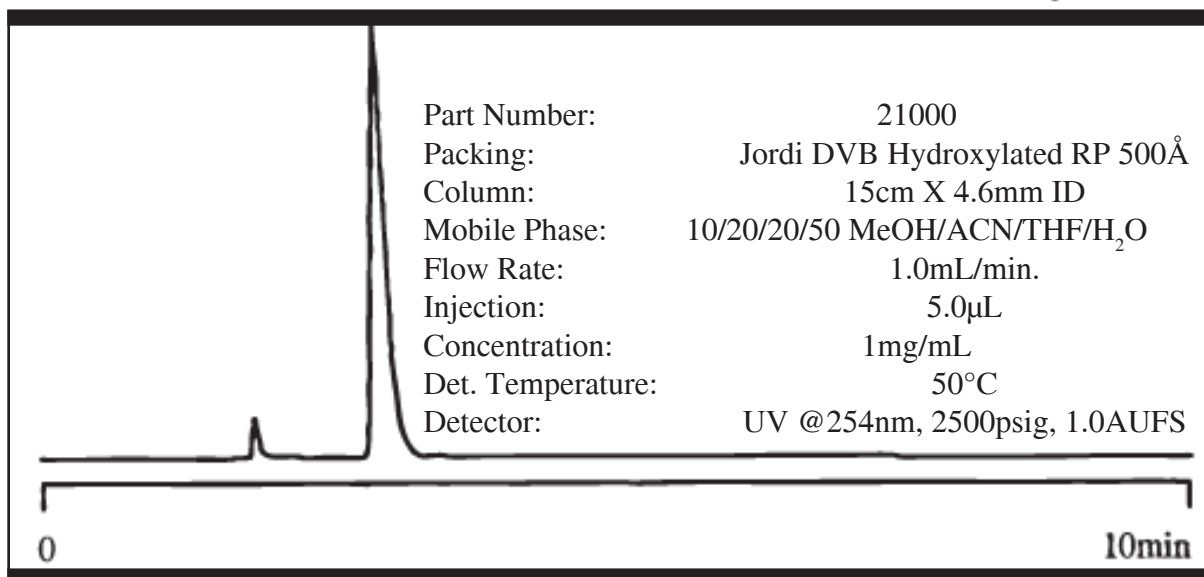
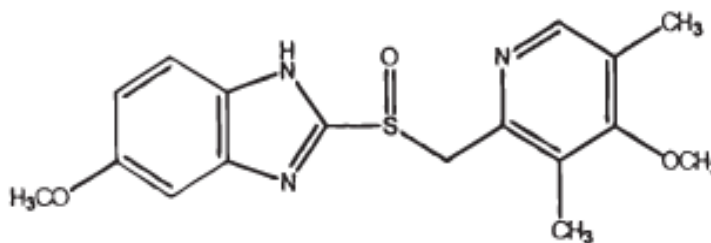
Jordi DVB Hydroxylated RP columns are formed from our 100% divinylbenzene based polymer functionalized with diol groups. Jordi DVB Hydroxylated RP columns are 100% carbon loaded as opposed to silica columns providing greatly increased sample loading capacity. Diol functionality allows for hydrogen bond formation and different selectivity from our hydrophobic phases.



Advantages of Jordi DVB Hydroxylated RP Columns:

- Solvents - can be changed without damaging the column
- Wide pH Range - pH values from 0 to 14
- Efficient - high plate counts for sharp, symmetrical peaks
- Powerful - high pore-volume for greater resolution
- Long column life - 3 month warranty standard
- Quality - subjected to rigorous quality checks

ANTIULCERATIVE OMEPRAZOLE



Jordi Gel DVB Hydroxylated RP Columns					
<i>Cat. #</i>	<i>Pore Size</i>	<i>Particle Size</i>	<i>Length</i>	<i>ID</i>	<i>Price</i>
21007	500Å	5μ	10cm	4.6mm	\$ 435.00
21000	500Å	5μ	15cm	4.6mm	\$ 545.00
21001	500Å	5μ	25cm	4.6mm	\$ 655.00
21002	500Å	5μ	10cm	10mm	\$ 655.00

Jordi Gel DVB Hydroxylated RP Columns - Micro & Minibore					
<i>Cat. #</i>	<i>Pore Size</i>	<i>Particle Size</i>	<i>Length</i>	<i>ID</i>	<i>Price</i>
21016	500Å	5μ	5cm	2.1mm	\$ 435.00
21017	500Å	5μ	10cm	2.1mm	\$ 468.00

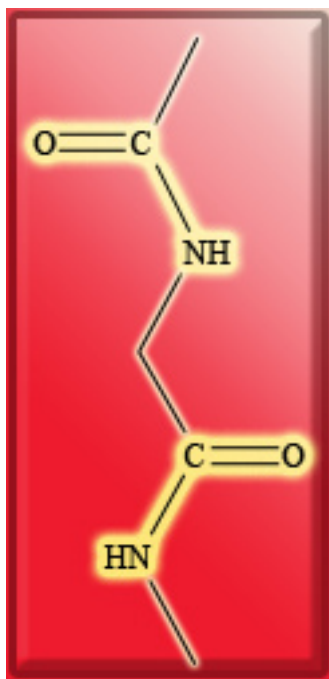
Jordi Gel DVB Hydroxylated RP Columns - Semi Prep					
<i>Cat. #</i>	<i>Pore Size</i>	<i>Particle Size</i>	<i>Length</i>	<i>ID</i>	<i>Price</i>
21006	500Å	5μ	30cm	7.8mm	\$1,205.00
21003	500Å	5μ	25cm	10mm	\$1,205.00

Jordi Gel DVB Fluorinated RP Columns - Prep					
<i>Cat. #</i>	<i>Pore Size</i>	<i>Particle Size</i>	<i>Length</i>	<i>ID</i>	<i>Price</i>
21004	500Å	5μ	10cm	22mm	\$1,315.00
21005	500Å	5μ	25cm	22mm	\$3,075.00

Specialty columns and packings are available on request. Please telephone us for pricing.

Jordi Peptide Protein Columns

Peptide Protein columns are a polyamide-based gel for the reverse phase analysis of peptides, proteins and other polar molecules. Peak shapes for many basic organic materials are improved as compared to results on hydrophobic phases. Peptide protein columns are currently being used by major pharmaceutical companies as well as government health organizations for protein analysis.



Advantages of Jordi Peptide Protein Columns:

- Rugged - useful at high temperatures (150°C) and with nearly any solvent
- Solvents - can be changed without damaging the column
- Wide pH Range - pH values from 0 to 14
- Efficient - high plate counts for sharp, symmetrical peaks
- Long column life - 3 month warranty standard
- Quality - subjected to rigorous quality checks

Polyamide gel can be used with virtually any organic and/or buffer system including:

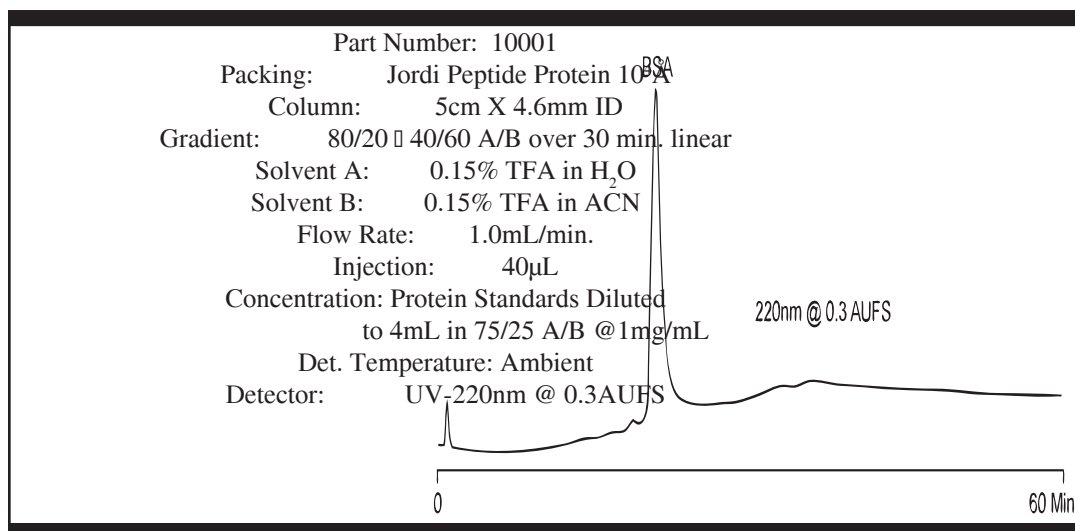
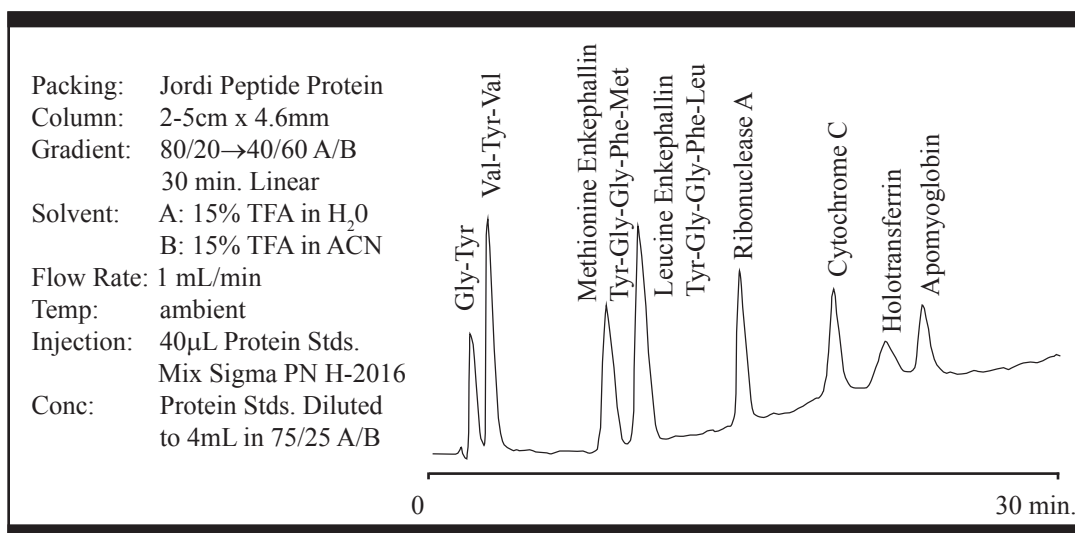
- TRIS
- Phosphate
- Acetic acid
- Trifluoroacetic acid
- Methanol, Acetonitrile, THF

Acetic or Formic Acids serve as an excellent replacement for TFA for MS analysis of proteins and peptides used in gradients of water to acetonitrile.

Jordi Peptide Protein Applications and Solvents	
<i>Example Applications:</i>	
BSA	
Holotransferrin	
Cytochrome C	
Apomyoglobin	
Peptides	
<i>Typical Solvent Systems:</i>	
ACN & .1% TFA	
ACN/Acetic Acid 98/2	
H ₂ O/Acetic Acid 98/2	

Select Jordi Peptide Protein Applications

Peptide Protein columns maintain virtually all the benefits of our DVB resins such as wide pH range stability, high temp stability and high pressure stability. In addition, the polyamide backbone adds hydrophilicity which in turn allows complex molecules such as proteins and peptides to elute easily. This can be contrasted with DVB resins which tend to strongly and irreversibly adsorb proteins and many peptides. Peptide Protein columns are an excellent choice for reverse phase analysis.



Jordi Peptide Protein for RP					
<i>Cat. #</i>	<i>Pore Size</i>	<i>Particle Size</i>	<i>Length</i>	<i>ID</i>	<i>Price</i>
10001	10 ⁴ Å	5μ	5cm	4.6mm	\$ 545.00
10002	10 ⁴ Å	5μ	10cm	4.6mm	\$ 600.00
10003	10 ⁴ Å	5μ	15cm	4.6mm	\$ 655.00
10004	10 ⁴ Å	5μ	25cm	4.6mm	\$ 765.00

Jordi Peptide Protein for RP -Mini & Micro					
<i>Cat. #</i>	<i>Pore Size</i>	<i>Particle Size</i>	<i>Length</i>	<i>ID</i>	<i>Price</i>
10106	10 ⁴ Å	5μ	5cm	2.1mm	\$ 435.00
10108	10 ⁴ Å	5μ	10cm	2.1mm	\$ 545.00

Jordi Peptide Protein for RP - Semi Prep					
<i>Cat. #</i>	<i>Pore Size</i>	<i>Particle Size</i>	<i>Length</i>	<i>ID</i>	<i>Price</i>
10201	10 ⁴ Å	5μ	5cm	10mm	\$ 875.00
10202	10 ⁴ Å	5μ	10cm	10mm	\$ 930.00
10204	10 ⁴ Å	5μ	25cm	10mm	\$1,095.00
10104	10 ⁴ Å	5μ	30cm	7.8mm	\$1,095.00

Jordi Peptide Protein for RP - Prep-1" OD					
<i>Cat. #</i>	<i>Pore Size</i>	<i>Particle Size</i>	<i>Length</i>	<i>ID</i>	<i>Price</i>
10301	10 ⁴ Å	5μ	5cm	22mm	\$1,645.00
10302	10 ⁴ Å	5μ	10cm	22mm	\$2,195.00
10304	10 ⁴ Å	5μ	25cm	22mm	\$3,845.00

Jordi Peptide Protein for RP - Prep-2" OD					
<i>Cat. #</i>	<i>Pore Size</i>	<i>Particle Size</i>	<i>Length</i>	<i>ID</i>	<i>Price</i>
10502	10 ⁴ Å	5μ	10cm	50mm	\$ 6,595.00
10504	10 ⁴ Å	5μ	25cm	50mm	\$10,995.00

Jordi Peptide Protein for RP - PEEK Hardware					
<i>Cat. #</i>	<i>Pore Size</i>	<i>Particle Size</i>	<i>Length</i>	<i>ID</i>	<i>Price</i>
10150	10 ⁴ Å	5μ	15cm	4.6mm	\$ 545.00
10151	10 ⁴ Å	5μ	25cm	4.6mm	\$ 655.00
10156	10 ⁴ Å	5μ	25cm	10mm	\$1,095.00

Core Values

Integrity -

The guiding principle that
overrides all other
concerns.

We do what we say we will do.

To see the next Jordi core value turn to page 78.

Jordi Gel DVB Fast Protein Analysis Non-Porous Resin

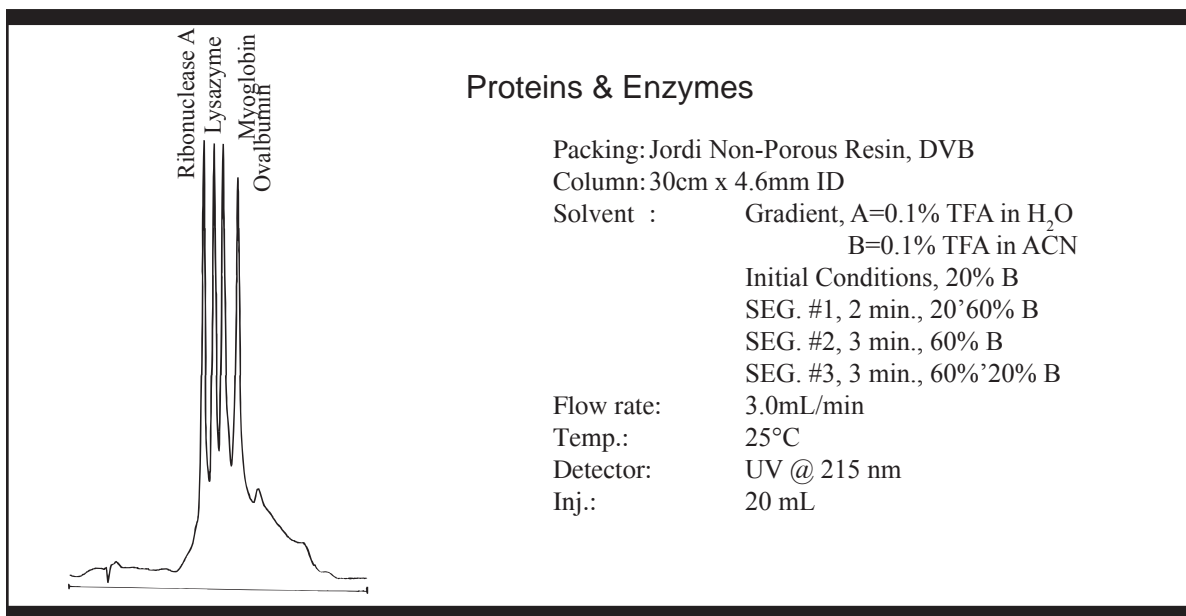
Non-porous resin columns allow the rapid analysis of peptides and proteins using gradients of water to acetonitrile containing .1% TFA. Columns are prepared from 100% divinylbenzene imparting greater strength and rigidity to the gels. This allows the use of nearly any solvent for column conditioning including 1M NaOH. Jordi DVB columns have undergone over 25 years of refinement. They are unique in their ability to be used in virtually any solvent and remain extremely durable.



Advantages of Jordi DVB Columns:

- Rugged - high temperature stable and virtually all organic solvents
- Solvents - can be changed without damaging the column
- Wide pH range - pH values from 0 to 14
- Long column life - 3 month warranty standard
- Quality - DVB RP columns have been in continuous production for over 25 years and are subjected to rigorous quality check

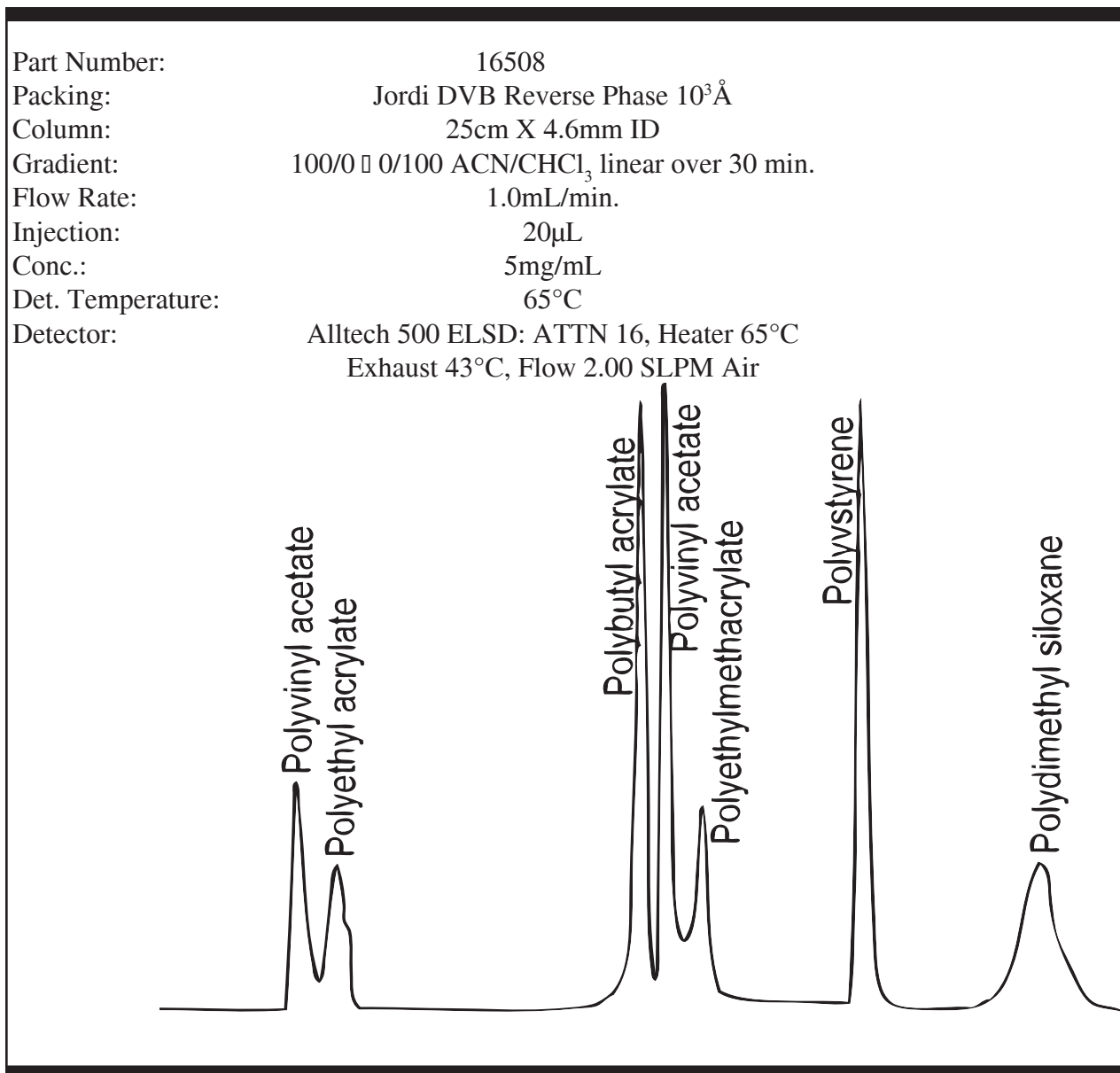
Jordi Fast Protein Analysis Non Porous Columns					
Cat. #	Pore Size	Particle Size	Length	X ID	Price
17020	Solid Bead	5 μ	3.0cm	4.6mm	\$347.00



Jordi Normal Phase

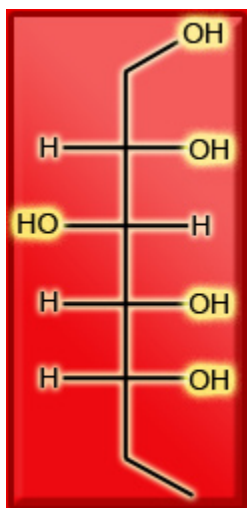
Jordi Normal Phase (NP) columns allow separations based on compound polarity as opposed to hydrophobicity. The development of NP was limited historically by poor run-to-run reproducibility due to long equilibration times on polar stationary phases. Jordi NP columns overcome this limitation due to our robust polymeric packing materials. This enables more rapid equilibration rates without damaging the column. NP columns can be used for the separation of complex mixtures by functional group class. All Jordi NP columns are completely pH stable from 0-14 and have no known solvent limitations.

POLYMER CLASS SEPARATION USING RP/NP CHROMATOGRAPHY



Jordi NP DVB Glucose Columns

NP DVB glucose columns enable the normal phase separation of a wide range of compounds based on their polarity. Weakly polar compounds are found to elute first followed by more polar components. This can be used to fractionate a sample based on the functional groups present in each molecule. Gradients are the opposite of those typically used for RP chromatography and thus a gradient from a non-polar solvent to a more polar solvent is used.



Advantages of Jordi Gel Glucose Columns:

- Class based separations
- Efficiency - High column plate counts
- Ease of Use - Rapid recovery of the phase following gradient analysis
- Rugged - solvent changes will not damage columns
- Solvent compatibility - 100% organic to 100% aqueous buffers
- Wide pH range - pH values from 0 to 14.
- Long column life - 3 month warranty standard
- Quality - subjected to rigorous quality checks

Jordi NP DVB Glucose Columns					
<i>Cat. #</i>	<i>Pore Size</i>	<i>Particle Size</i>	<i>Length</i>	<i>ID</i>	<i>Price</i>
18603	500Å	5µ	10cm	4.6mm	\$ 435.00
18600	500Å	5µ	15cm	4.6mm	\$ 545.00
18601	500Å	5µ	25cm	4.6mm	\$ 655.00
18602	500Å	5µ	10cm	10mm	\$ 655.00

Jordi NP DVB Glucose Columns - Mini & Microbore					
<i>Cat. #</i>	<i>Pore Size</i>	<i>Particle Size</i>	<i>Length</i>	<i>ID</i>	<i>Price</i>
18640	500Å	5µ	5cm	2.1mm	\$ 435.00
18641	500Å	5µ	10cm	2.1mm	\$ 468.00

Jordi NP DVB Glucose Columns - Semi Prep					
<i>Cat. #</i>	<i>Pore Size</i>	<i>Particle Size</i>	<i>Length</i>	<i>ID</i>	<i>Price</i>
18611	500Å	5µ	30cm	7.8mm	\$1,205.00
18610	500Å	5µ	25cm	10mm	\$1,205.00

Jordi NP DVB Glucose Columns - Prep					
<i>Cat. #</i>	<i>Pore Size</i>	<i>Particle Size</i>	<i>Length</i>	<i>ID</i>	<i>Price</i>
18620	500Å	5µ	10cm	22mm	\$1,315.00
18621	500Å	5µ	25cm	22mm	\$3,075.00

Core Values

Excellence -

We strive to be the very best at what we do and choose to exit from business, which we cannot perform at a high level of quality.

To see the next Jordi core value turn to page 80.

Jordi NP DVB Polyamino Columns

NP DVB Polyamino columns contain secondary amino groups which quaternize in acidic solutions, allowing mixed-mode ion exchange and normal phase separations. Normal Phase separations are used to separate molecules based on their polarity as opposed to their hydrophobicity as in RP. Weakly polar compounds are found to elute first followed by more polar components. This can be used to fractionate a sample based on the functional groups present in each molecule. Gradients are the opposite of those typically used for RP chromatography and thus a gradient from a non-polar solvent to a more polar solvent is used.



Advantages of Jordi NP DVB Polyamino Columns:

- Class based separations
- Efficiency - high column plate counts
- Mixed-mode separations - combining ion exchange and normal phase
- Ease of Use - rapid recovery of the phase following gradient analysis
- Rugged - solvent changes will not damage columns
- Solvent compatibility - 100% organic to 100% aqueous buffers
- Wide pH range - pH values from 0 to 14.
- Long column life - 3 month warranty standard
- Quality - subjected to rigorous quality checks

Jordi NP DVB Polyamino Columns					
<i>Cat. #</i>	<i>Pore Size</i>	<i>Particle Size</i>	<i>Length</i>	<i>ID</i>	<i>Price</i>
17053	500Å	5µ	10cm	4.6mm	\$ 435.00
17050	500Å	5µ	15cm	4.6mm	\$ 545.00
17051	500Å	5µ	25cm	4.6mm	\$ 655.00
17052	500Å	5µ	10cm	10mm	\$ 655.00

Jordi NP DVB Polyamino Columns - Minibore					
<i>Cat. #</i>	<i>Pore Size</i>	<i>Particle Size</i>	<i>Length</i>	<i>ID</i>	<i>Price</i>
17062	500Å	5µ	10cm	2.1mm	\$ 468.00

Jordi NP DVB Polyamino Columns - Semi Prep					
<i>Cat. #</i>	<i>Pore Size</i>	<i>Particle Size</i>	<i>Length</i>	<i>ID</i>	<i>Price</i>
17077	500Å	5µ	30cm	7.8mm	\$1,205.00
17076	500Å	5µ	25cm	10mm	\$1,205.00

Jordi NP DVB Polyamino Columns - Prep					
<i>Cat. #</i>	<i>Pore Size</i>	<i>Particle Size</i>	<i>Length</i>	<i>ID</i>	<i>Price</i>
17081	500Å	5µ	10cm	22mm	\$1,315.00
17082	500Å	5µ	25cm	22mm	\$3,075.00

Core Values

Servant-hood, Christ Likeness -

Considering the needs of our customers and exceeding their expectations.

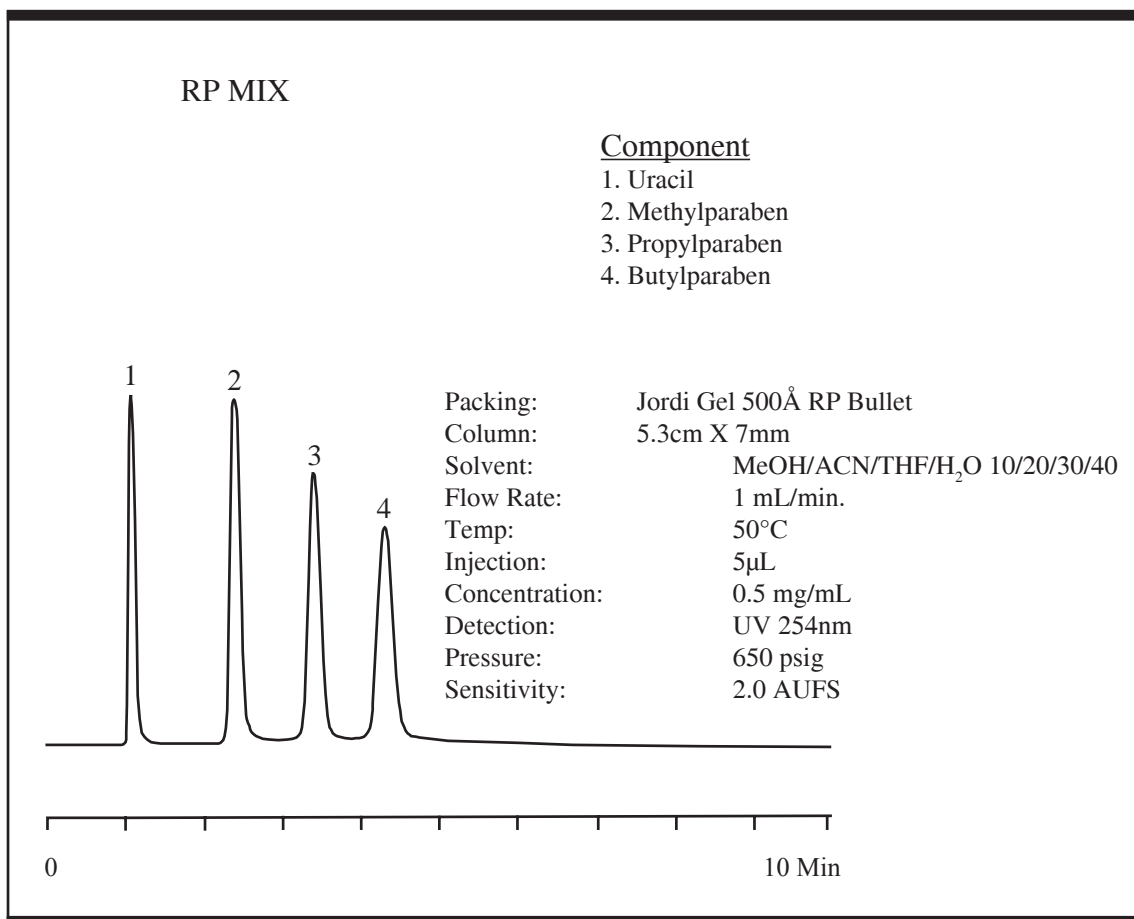
To see the next Jordi core value turn to page 84.

Jordi RP & NP Bullet Columns

Decrease your analysis time for RP and NP separations using Jordi bullet columns. These columns are packed with the same quality gels found in our other normal phase and reverse phase products. The bullet hardware allows for decreased analysis times by optimizing the column size and flow characteristics.

Advantages of Jordi RP & NP Bullet Columns:

- Broad Application - wide selection of surface chemistries
- Time Savings - decreased analysis times, five minutes or less
- Solvent - no increase in solvent consumption per analysis



Jordi Gel DVB RP Bullet Columns					
<i>Cat. #</i>	<i>Pore Size</i>	<i>Particle Size</i>	<i>Length</i>	<i>ID</i>	<i>Price</i>
60025	300Å	5µ	5.3cm	7mm	\$544.50
60026	500Å	5µ	5.3cm	7mm	\$544.50
60027	10 ³ Å	5µ	5.3cm	7mm	\$544.50

Jordi Gel DVB Fluorinated RP Bullet Columns					
<i>Cat. #</i>	<i>Pore Size</i>	<i>Particle Size</i>	<i>Length</i>	<i>ID</i>	<i>Price</i>
60020	300Å	5µ	5.3cm	7mm	\$654.50
60021	500Å	5µ	5.3cm	7mm	\$654.50
60022	10 ³ Å	5µ	5.3cm	7mm	\$654.50

Jordi Gel DVB C18 RP Bullet Column					
<i>Cat. #</i>	<i>Pore Size</i>	<i>Particle Size</i>	<i>Length</i>	<i>ID</i>	<i>Price</i>
60040	500Å	5µ	5.3cm	7mm	\$654.50

Jordi Gel DVB Hydroxylated RP Bullet Column					
<i>Cat. #</i>	<i>Pore Size</i>	<i>Particle Size</i>	<i>Length</i>	<i>ID</i>	<i>Price</i>
60035	500Å	5µ	5.3cm	7mm	\$654.50

Jordi Gel DVB Glucose NP Bullet Column					
<i>Cat. #</i>	<i>Pore Size</i>	<i>Particle Size</i>	<i>Length</i>	<i>ID</i>	<i>Price</i>
60046	500Å	5µ	5.3cm	7mm	\$654.50

Jordi Gel DVB Polyamino Bullet Column					
<i>Cat. #</i>	<i>Pore Size</i>	<i>Particle Size</i>	<i>Length</i>	<i>ID</i>	<i>Price</i>
60055	500Å	5µ	5.3cm	7mm	\$654.50

Jordi Gel DVB Sulfonated Bullet Column					
<i>Cat. #</i>	<i>Pore Size</i>	<i>Particle Size</i>	<i>Length</i>	<i>ID</i>	<i>Price</i>
60001	500Å	5µ	5.3cm	7mm	\$654.50

Jordi Peptide Protein Bullet Column					
<i>Cat. #</i>	<i>Pore Size</i>	<i>Particle Size</i>	<i>Length</i>	<i>ID</i>	<i>Price</i>
60060	10 ⁴ Å	5µ	5.3cm	7mm	\$654.50

