

Jordi Gel DVB Columns

Our most popular GPC column, Jordi Gel DVB columns are prepared from 100% divinylbenzene as compared to the more common polystyrene divinylbenzene copolymer used by other manufacturers. This unique chemistry imparts greater strength and rigidity to the gels due to their highly crosslinked structure.

Jordi DVB columns have undergone over 25 years of refinement and represent one of the very best GPC columns on the market today. They are unique in their ability to be used in virtually any solvent. Jordi DVB columns have highly linear calibration curves and are available in a wide range of porosities. Routine or difficult solvents alike, Jordi DVB columns represent the pinnacle of GPC column excellence.

Advantages of Jordi DVB columns:

Rugged - high temperature stable (150°C), nearly all organic solvents
 Linear Calibrations - maximize precision of molecular weight calculations

Range of Porosities - 100Å to 10⁵Å & Mixed Bed & SB

Solvents - can be changed without damaging the column

Wide pH Range - mobile phase & pH values from 0 to 14

Efficient - High plate counts for sharp, symmetrical peaks

Powerful - High pore-volume for greater resolution

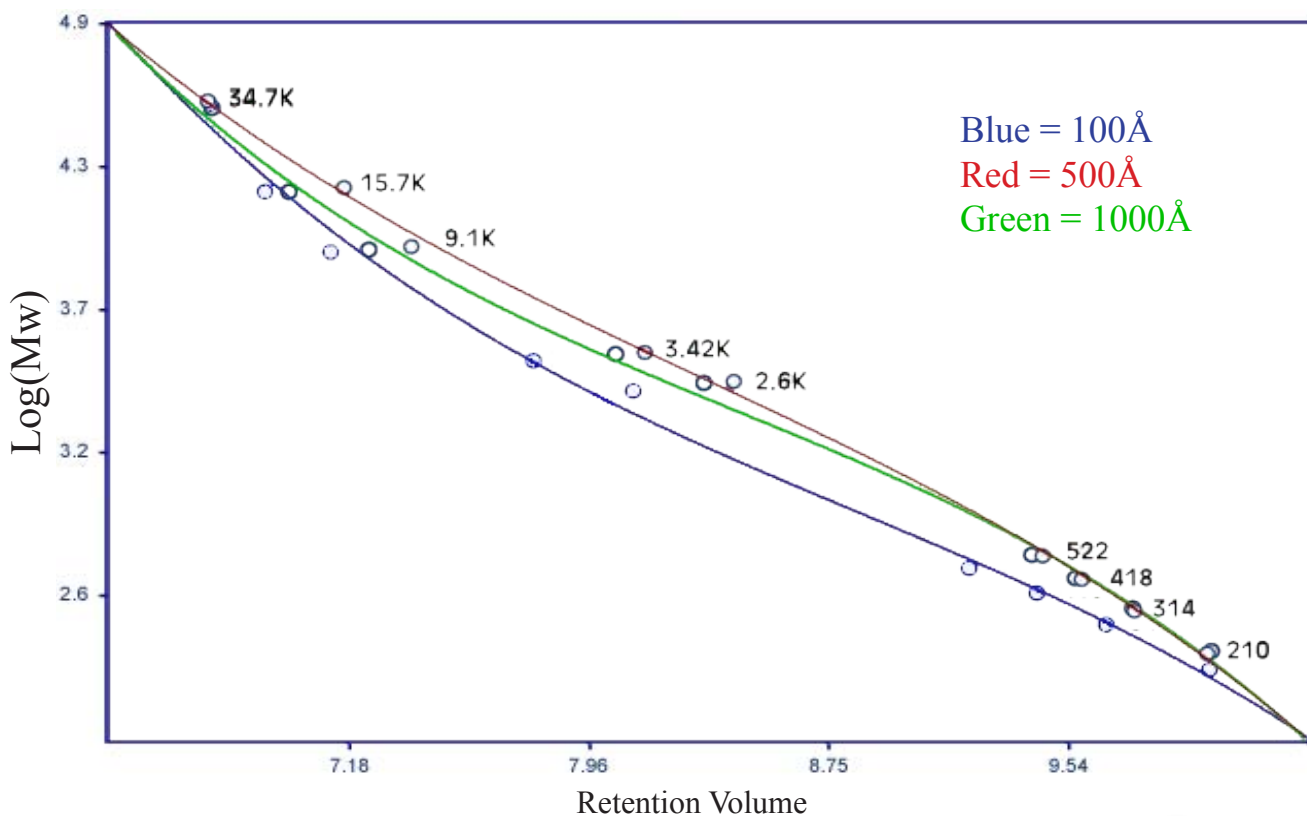
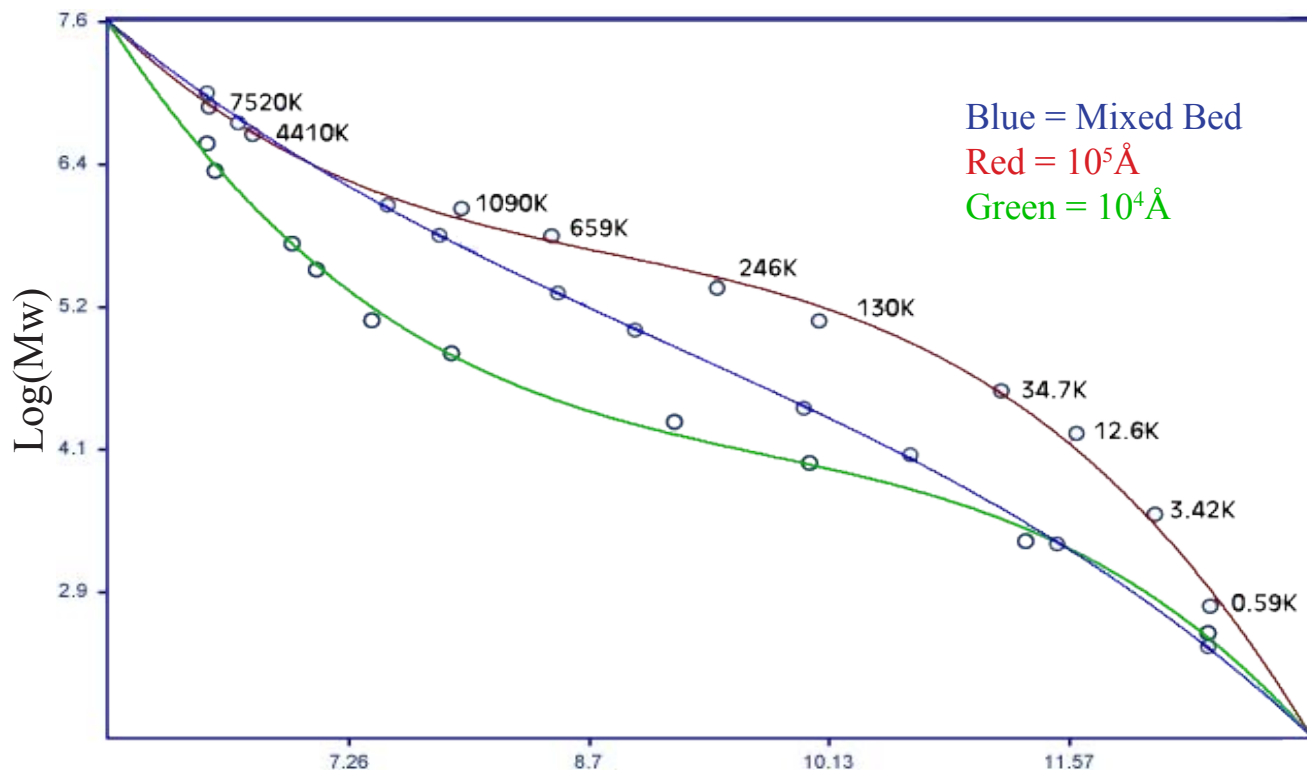
Long column life - 3 month warranty standard

Quality - DVB columns have been in continuous production for over 25 years and are subjected to rigorous quality checks

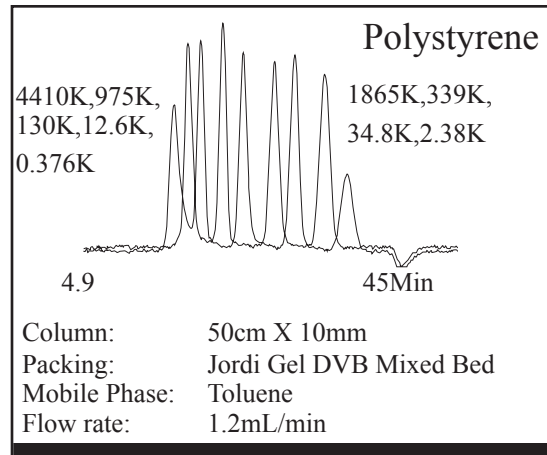
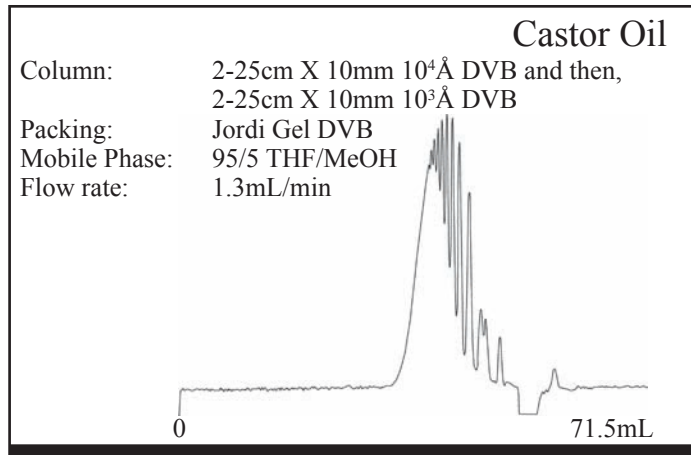
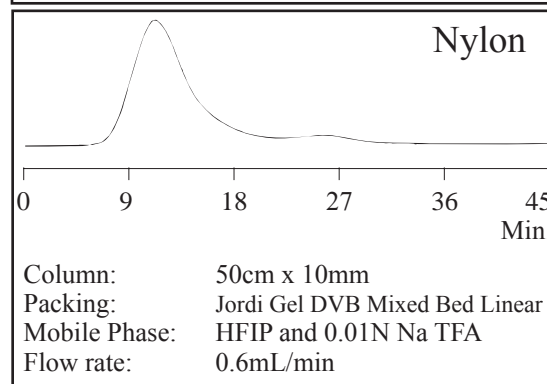
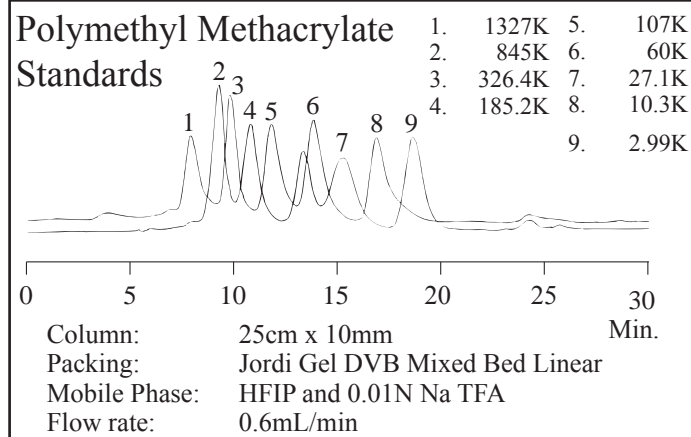
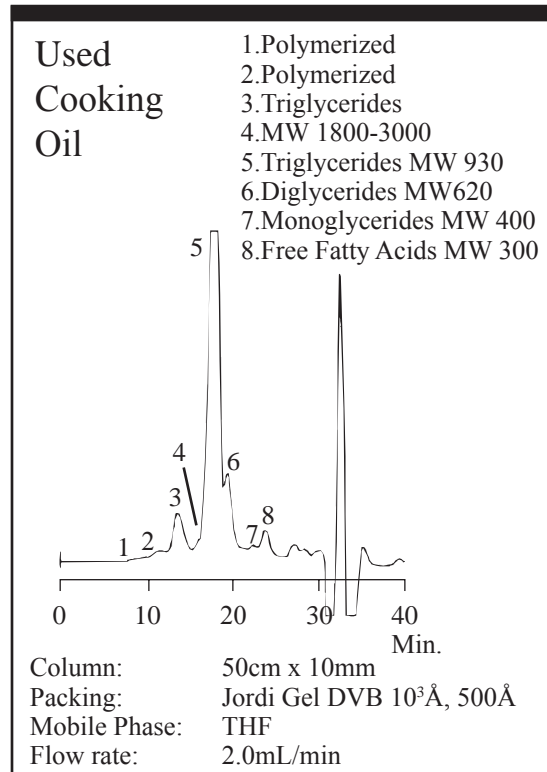
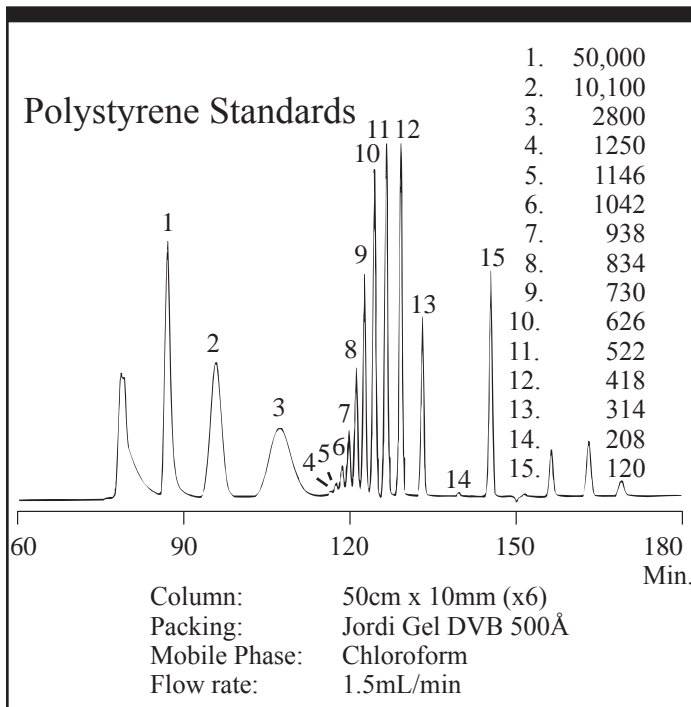
Jordi Gel DVB Applications and Solvents	
Typical Applications:	
Poly(ethylene Terephthalate)	Nylons
Poly(vinylidene Fluoride)	Polycarbonate
Polybutadiene	Polystyrene
Poly(lactide)	Polyethylene
Polypropylene	Polycarbonate
Typical Solvent Systems:	
Tetrahydrofuran (THF)	Trichlorobenzene (TCB)
N-methylpyrrolidone (NMP)	Dimethylacetamide (DMAC)
Hexafluoroisopropanol (HFIP)	Chloroform
Dimethylformamide (DMF)	Toluene



Jordi Gel DVB Calibration Curves



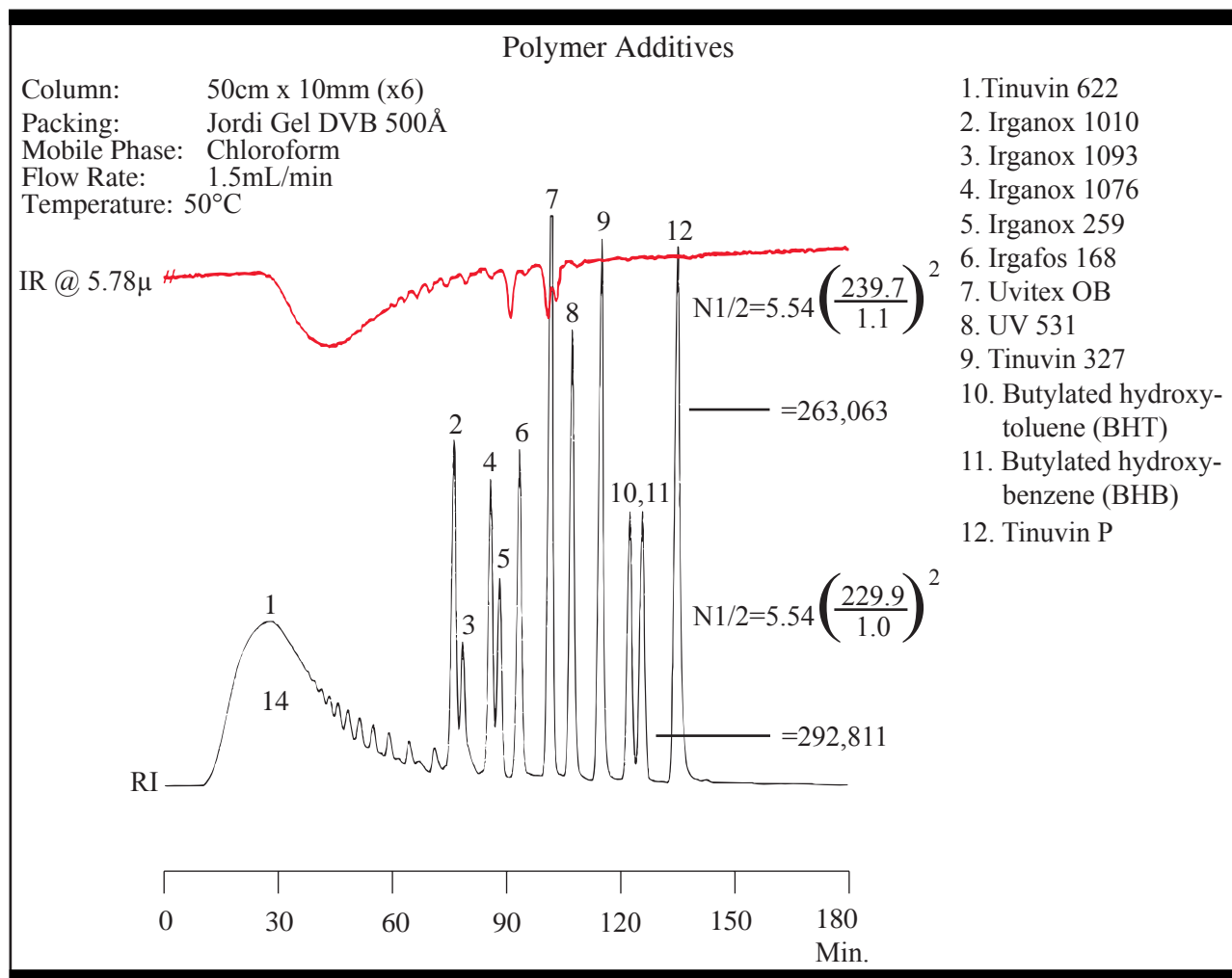
Select Jordi Gel DVB Applications



Select Jordi Gel DVB Applications

Ultrahigh Resolution GPC Method for Additives Analysis

Jordi FLP has now developed GPC/SEC columns capable of resolving and quantitating up to several dozen additives simultaneously. The figure below demonstrates this ability. Standards 10 and 11 differ by only one methyl group and are baseline separated while the column set simultaneously separates Tinuvin 622 with a MW of several thousand.



Jordi Gel DVB Columns — Organic Solvent					
<i>Cat. #</i>	<i>Pore Size</i>	<i>Particle Size</i>	<i>Length</i>	<i>ID</i>	<i>Price</i>
15070	100Å	5µ	30cm	7.8mm	\$ 985.00
15020	100Å	5µ	25cm	10mm	\$ 985.00
15000	100Å	5µ	50cm	10mm	\$1,865.00
15071	500Å	5µ	30cm	7.8mm	\$ 985.00
15021	500Å	5µ	25cm	10mm	\$ 985.00
15001	500Å	5µ	50cm	10mm	\$1,865.00
15072	10 ³ Å	5µ	30cm	7.8mm	\$ 985.00
15022	10 ³ Å	5µ	25cm	10mm	\$ 985.00
15002	10 ³ Å	5µ	50cm	10mm	\$1,865.00
15073	10 ⁴ Å	5µ	30cm	7.8mm	\$ 985.00
15023	10 ⁴ Å	5µ	25cm	10mm	\$ 985.00
15003	10 ⁴ Å	5µ	50cm	10mm	\$1,865.00
15074	10 ⁵ Å	5µ	30cm	7.8mm	\$ 985.00
15024	10 ⁵ Å	5µ	25cm	10mm	\$ 985.00
15004	10 ⁵ Å	5µ	50cm	10mm	\$1,865.00
15075	Mixed Bed	5µ	30cm	7.8mm	\$1,045.00
15025	Mixed Bed	5µ	25cm	10mm	\$1,045.00
15005	Mixed Bed	5µ	50cm	10mm	\$1,975.00
15076	Solid Bead	5µ	30cm	7.8mm	\$1,045.00
15026	Solid Bead	5µ	25cm	10mm	\$1,045.00
15006	Solid Bead	5µ	50cm	10mm	\$1,975.00
<i>Light Scattering</i>					
15077	Mixed Bed	5µ	30cm	7.8mm	\$1,205.00
15027	Mixed Bed	5µ	25cm	10mm	\$1,205.00
15007	Mixed Bed	5µ	50cm	10mm	\$2,305.00

Jordi Gel DVB Organic - Solvent Saver					
<i>Cat. #</i>	<i>Pore Size</i>	<i>Particle Size</i>	<i>Length</i>	<i>ID</i>	<i>Price</i>
15307	100Å	5µ	15cm	4.6mm	\$ 435.00
15306	100Å	5µ	25cm	4.6mm	\$ 545.00
15309	500Å	5µ	15cm	4.6mm	\$ 435.00
15308	500Å	5µ	25cm	4.6mm	\$ 545.00
15311	10 ³ Å	5µ	15cm	4.6mm	\$ 435.00
15310	10 ³ Å	5µ	25cm	4.6mm	\$ 545.00
15313	10 ⁴ Å	5µ	15cm	4.6mm	\$ 435.00
15312	10 ⁴ Å	5µ	25cm	4.6mm	\$ 545.00
15315	10 ⁵ Å	5µ	15cm	4.6mm	\$ 435.00
15314	10 ⁵ Å	5µ	25cm	4.6mm	\$ 545.00
15317	Mixed Bed	5µ	15cm	4.6mm	\$ 435.00
15316	Mixed Bed	5µ	25cm	4.6mm	\$ 545.00
15319	Solid Bead	5µ	15cm	4.6mm	\$ 435.00
15318	Solid Bead	5µ	25cm	4.6mm	\$ 545.00

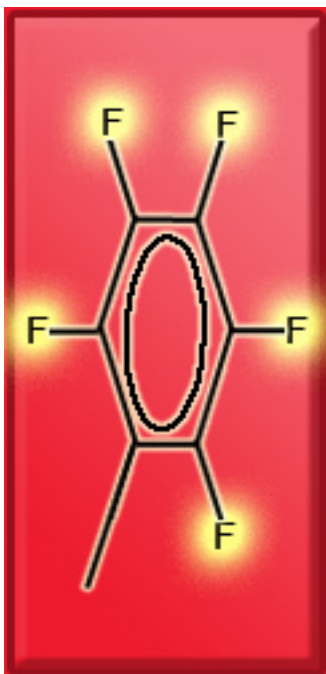
Jordi Gel DVB Organic Solvent - Prep 1" OD					
<i>Cat. #</i>	<i>Pore Size</i>	<i>Particle Size</i>	<i>Length</i>	<i>ID</i>	<i>Price</i>
15120	100Å	5µ	25cm	22mm	\$2,745.00
15100	100Å	5µ	50cm	22mm	\$3,845.00
15121	500Å	5µ	25cm	22mm	\$2,745.00
15101	500Å	5µ	50cm	22mm	\$3,845.00
15122	10 ³ Å	5µ	25cm	22mm	\$2,745.00
15102	10 ³ Å	5µ	50cm	22mm	\$3,845.00
15123	10 ⁴ Å	5µ	25cm	22mm	\$2,745.00
15103	10 ⁴ Å	5µ	50cm	22mm	\$3,845.00
15124	10 ⁵ Å	5µ	25cm	22mm	\$2,745.00
15104	10 ⁵ Å	5µ	50cm	22mm	\$3,845.00
15125	Mixed Bed	5µ	25cm	22mm	\$2,965.00
15105	Mixed Bed	5µ	50cm	22mm	\$4,065.00
15126	Solid Bead	5µ	25cm	22mm	\$2,965.00
15127	Solid Bead	5µ	50cm	22mm	\$3,966.00

Jordi Gel DVB Organic Solvent - Prep 2" OD					
<i>Cat. #</i>	<i>Pore Size</i>	<i>Particle Size</i>	<i>Length</i>	<i>ID</i>	<i>Price</i>
15320	100Å	10µ	25cm	50mm	\$ 9,889.00
15300	100Å	10µ	50cm	50mm	\$15,389.00
15321	500Å	10µ	25cm	50mm	\$ 9,889.00
15301	500Å	10µ	50cm	50mm	\$15,389.00
15322	10 ³ Å	10µ	25cm	50mm	\$ 9,889.00
15302	10 ³ Å	10µ	50cm	50mm	\$15,389.00
15323	10 ⁴ Å	10µ	25cm	50mm	\$ 9,889.00
15303	10 ⁴ Å	10µ	50cm	50mm	\$15,389.00
15324	10 ⁵ Å	10µ	25cm	50mm	\$ 9,889.00
15304	10 ⁵ Å	10µ	50cm	50mm	\$15,389.00
15325	Mixed Bed	10µ	25cm	50mm	\$10,769.00
15305	Mixed Bed	10µ	50cm	50mm	\$16,269.00
15326	Solid Bead	10µ	25cm	50mm	\$10,769.00
15327	Solid Bead	10µ	50cm	50mm	\$16,269.00

Fluorinated DVB Columns

Jordi *FLA.S.H.* Fluorinated DVB Columns

Jordi non-stick Fluorinated GPC columns provide reduced sample-column interactions as compared to PS-DVB or 100% DVB columns. This allows the analysis of many polymers which have previously been impossible to analyze in convenient GPC solvents. The broad solvent compatibility of our Fluorinated columns allows the analysis of many sample types.



This one of a kind, patent pending technology also greatly reduces column back pressure, allowing its application at high speeds, while maintaining high resolution. The secret is the reduced resistance to mass transfer for the fluorinated surface. It is no longer necessary to sacrifice the quality of your molecular weight data to obtain short analysis times. Fluorinated columns run at normal flow rates save wear and tear on pump seals, extending pump lifetimes.

The reduced back pressure for Jordi Fluorinated columns can be applied for ultra-high resolution applications by using up to 6 - 50cm x 10mm columns in series. This provides up to a quarter million plates of separating power!

Advantages of Jordi Fluorinated GPC columns:

- Non-stick surface - for reduced sample-column interaction
- Reduced back pressure - due to low column solvent interaction
- Solvent Saver - no increase in solvent consumption per analysis
- High Speed - GPC analysis in seven minutes or less
- Linear Calibrations - maximize precision of MW calculations
- Wide range of porosities - 100Å to 10⁵Å, Mixed Bed & SB
- Rugged - long column life - 3 month warranty standard
- Quality - subjected to rigorous quality checks

Fluorinated DVB Applications and Solvents
Typical Applications:
Phenolics
Poly(propylacrylamide) (PAM)
Polybutadiene
Polycarbonate
Phenolic Resins
Poly(glycolic acid) (PGA)
Typical Solvent Systems:
Tetrahydrofuran (THF)
Chloroform
Trichlorobenzene
Hexane
Hexafluoroisopropanol (HFIP)

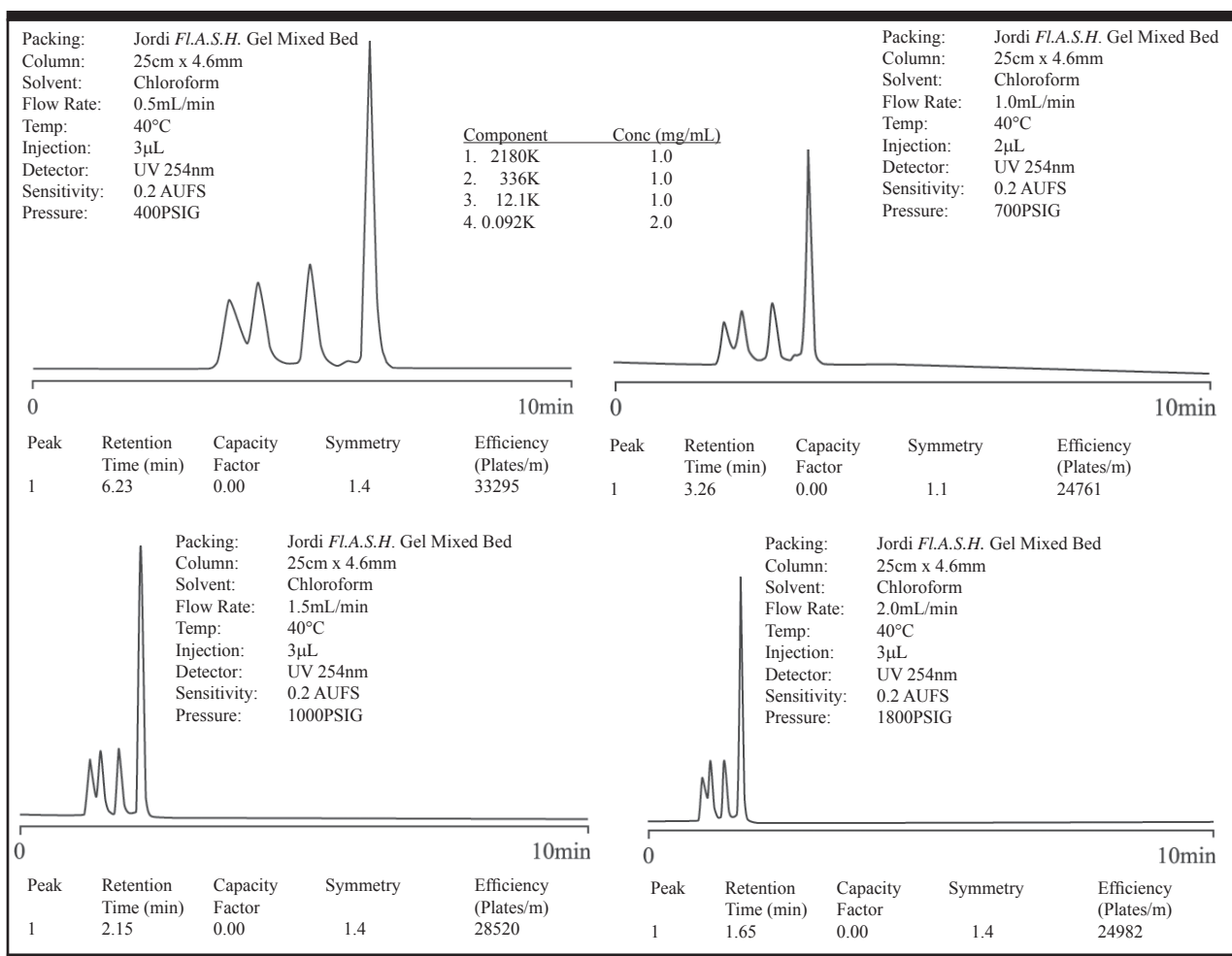
JORDI

Fluorinated DVB Columns

Select Jordi Fluorinated DVB Applications

LIGHTENING FAST ANALYSIS USING A JORDI FLUORINATED DVB COLUMN

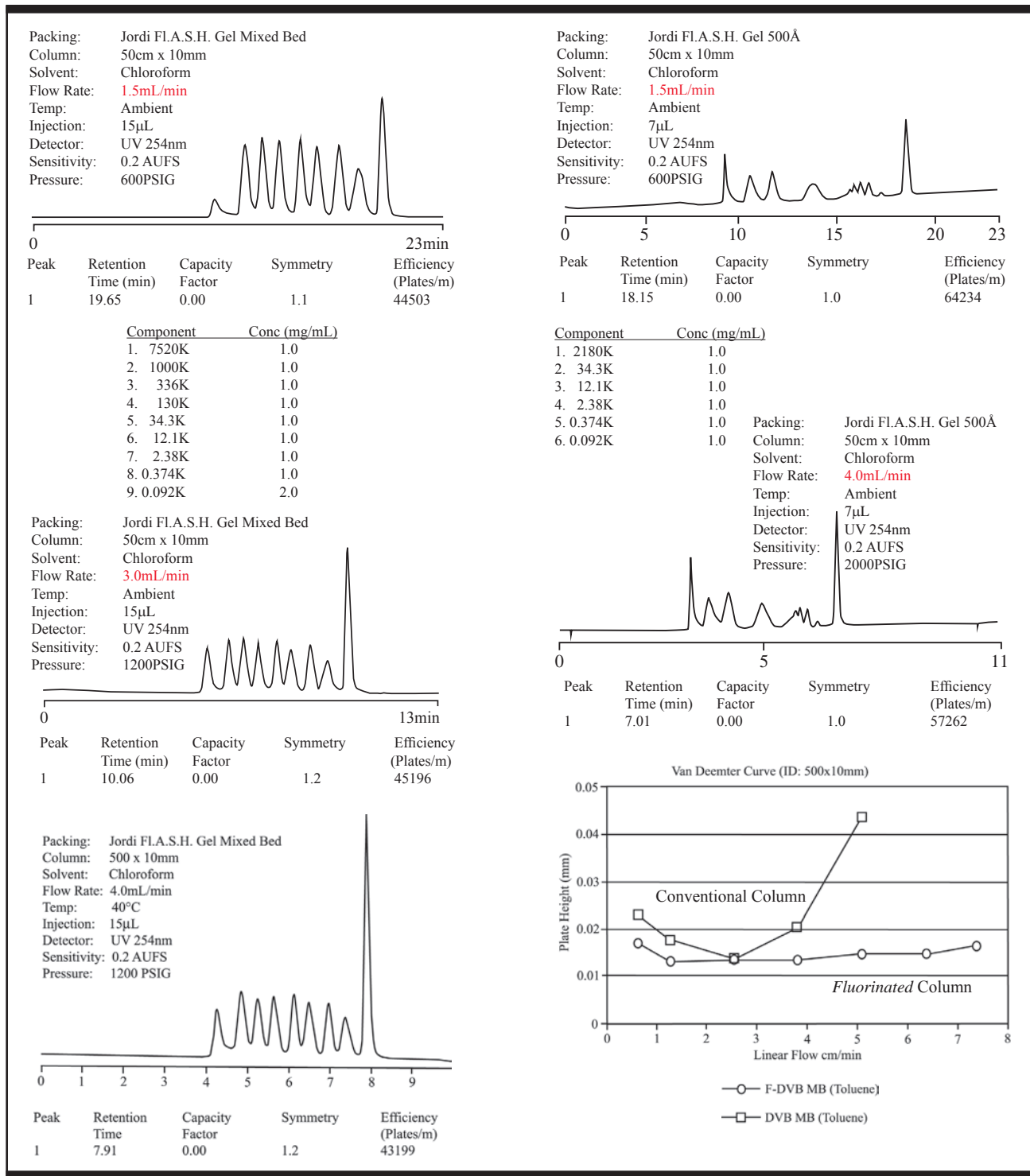
Decrease analysis time with new Jordi Fluorinated columns. This patent pending separations media is created using a fluorinated version of our reliable 100% DVB packings. The result is a large decrease in column back pressure enabling the use of high flow rates for rapid analysis without a significant loss of resolution. The secret is the large reduction in the interaction between the stationary phase and the mobile phase. A typical GPC run can take 20-40, minutes but with Jordi Fluorinated columns this analysis can be performed without significant loss of resolution in as little as 7 minutes! Columns of identical dimensions packed with our Fluorinated gel display a factor of four reduction in back pressure allowing their application at flow rates four times faster than standard GPC columns. Experience the difference for yourself.



Fluorinated DVB Columns

Fluorinated GPC Column

Our latest innovation in GPC column packings. Fluorinated DVB media allows a decrease in analysis time from 30 minutes to 7 minutes using a 50cm column without sacrificing significant resolution. Operational pressures are reduced by a factor of four or more!



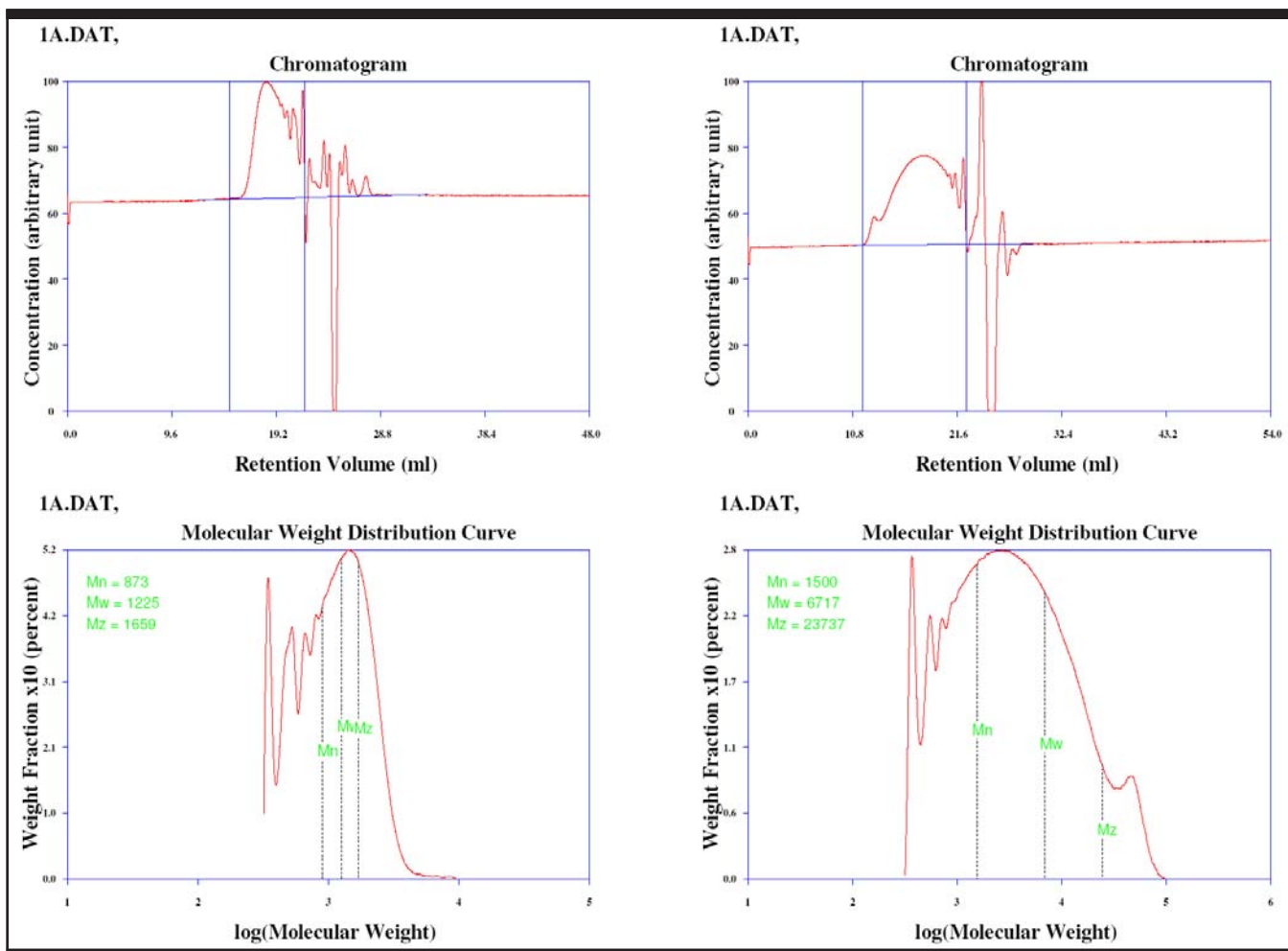
Fluorinated DVB Columns

Select Jordi Fluorinated DVB Applications

REDUCED ADSORPTION OF PHENOLIC RESINS ON FLUORINATED DVB

Part Number: 15001
Packing: Jordi DVB 500Å
Column: 50cm X 10mm ID
Solvent: 95/5 THF/MeOH
Flow Rate: 1.2mL/min.
Concentration: 2.5mg/mL
Injection: 200µL
Det. Temperature: 35°C
Detector: Waters 410 RI, 8X, SF 20

Part Number: 90002
Packing: Jordi *FLA.S.H.* 10³Å
Column: 50cm X 10mm ID
Solvent: 95/5 THF/MeOH
Flow Rate: 1.2mL/min.
Concentration: 2.5mg/mL
Injection: 200µL
Det. Temperature: 35°C
Detector: Waters 410 RI, 8X, SF 20



JORDI

Fluorinated DVB Columns

Jordi Gel DVB Fluorinated Columns — Organic Solvent					
<i>Cat. #</i>	<i>Pore Size</i>	<i>Particle Size</i>	<i>Length</i>	<i>ID</i>	<i>Price</i>
90060	100Å	5μ	30cm	7.8mm	\$1,155.00
90010	100Å	5μ	25cm	10mm	\$1,155.00
90000	100Å	5μ	50cm	10mm	\$2,194.50
90061	500Å	5μ	30cm	7.8mm	\$1,155.00
90011	500Å	5μ	25cm	10mm	\$1,155.00
90001	500Å	5μ	50cm	10mm	\$2,194.50
90062	10 ³ Å	5μ	30cm	7.8mm	\$1,155.00
90012	10 ³ Å	5μ	25cm	10mm	\$1,155.00
90002	10 ³ Å	5μ	50cm	10mm	\$2,194.50
90063	10 ⁴ Å	5μ	30cm	7.8mm	\$1,155.00
90013	10 ⁴ Å	5μ	25cm	10mm	\$1,155.00
90003	10 ⁴ Å	5μ	50cm	10mm	\$2,194.50
90064	10 ⁵ Å	5μ	30cm	7.8mm	\$1,155.00
90014	10 ⁵ Å	5μ	25cm	10mm	\$1,155.00
90004	10 ⁵ Å	5μ	50cm	10mm	\$2,194.50
90065	Mixed Bed	5μ	30cm	7.8mm	\$1,204.50
90015	Mixed Bed	5μ	25cm	10mm	\$1,204.50
90005	Mixed Bed	5μ	50cm	10mm	\$2,304.50
90066	Solid Bead	5μ	30cm	7.8mm	\$1,204.50
90016	Solid Bead	5μ	25cm	10mm	\$1,204.50
90006	Solid Bead	5μ	50cm	10mm	\$2,304.50
<i>Light Scattering</i>					
90067	Mixed Bed	5μ	30cm	7.8mm	\$1,375.00
90017	Mixed Bed	5μ	25cm	10mm	\$1,375.00
90007	Mixed Bed	5μ	50cm	10mm	\$2,634.50

Jordi Gel DVB Fluorinated Columns — Solvent Saver					
<i>Cat. #</i>	<i>Pore Size</i>	<i>Particle Size</i>	<i>Length</i>	<i>ID</i>	<i>Price</i>
90070	100Å	5μ	15cm	4.6mm	\$ 544.50
90080	100Å	5μ	25cm	4.6mm	\$ 654.50
90071	500Å	5μ	15cm	4.6mm	\$ 544.50
90081	500Å	5μ	25cm	4.6mm	\$ 654.50
90072	10 ³ Å	5μ	15cm	4.6mm	\$ 544.50
90082	10 ³ Å	5μ	25cm	4.6mm	\$ 654.50
90073	10 ⁴ Å	5μ	15cm	4.6mm	\$ 544.50
90083	10 ⁴ Å	5μ	25cm	4.6mm	\$ 654.50
90074	10 ⁵ Å	5μ	15cm	4.6mm	\$ 544.50
90084	10 ⁵ Å	5μ	25cm	4.6mm	\$ 654.50
90075	Mixed Bed	5μ	15cm	4.6mm	\$ 544.50
90085	Mixed Bed	5μ	25cm	4.6mm	\$ 654.50
90076	Solid Bead	5μ	15cm	4.6mm	\$ 544.50
90086	Solid Bead	5μ	25cm	4.6mm	\$ 654.50

JORDI

Fluorinated DVB Columns

Jordi Gel DVB Fluorinated Columns — 1" OD — Organic Solvent					
<i>Cat. #</i>	<i>Pore Size</i>	<i>Particle Size</i>	<i>Length</i>	<i>ID</i>	<i>Price</i>
90020	100Å	5μ	25cm	22mm	\$3,074.50
90030	100Å	5μ	50cm	22mm	\$4,174.50
90021	500Å	5μ	25cm	22mm	\$3,074.50
90031	500Å	5μ	50cm	22mm	\$4,174.50
90022	10 ³ Å	5μ	25cm	22mm	\$3,074.50
90032	10 ³ Å	5μ	50cm	22mm	\$4,174.50
90023	10 ⁴ Å	5μ	25cm	22mm	\$3,074.50
90033	10 ⁴ Å	5μ	50cm	22mm	\$4,174.50
90024	10 ⁵ Å	5μ	25cm	22mm	\$3,074.50
90034	10 ⁵ Å	5μ	50cm	22mm	\$4,174.50
90025	Mixed Bed	5μ	25cm	22mm	\$3,294.50
90035	Mixed Bed	5μ	50cm	22mm	\$4,394.50
90026	Solid Bead	5μ	25cm	22mm	\$3,294.50
90036	Solid Bead	5μ	50cm	22mm	\$4,394.50

Jordi DVB Fluorinated Prep Columns — 2" OD — Organic Solvent					
<i>Cat. #</i>	<i>Pore Size</i>	<i>Particle Size</i>	<i>Length</i>	<i>ID</i>	<i>Price</i>
90040	100Å	10μ	25cm	50mm	\$10,769.00
90050	100Å	10μ	50cm	50mm	\$16,269.00
90041	500Å	10μ	25cm	50mm	\$10,769.00
90051	500Å	10μ	50cm	50mm	\$16,269.00
90042	10 ³ Å	10μ	25cm	50mm	\$10,769.00
90052	10 ³ Å	10μ	50cm	50mm	\$16,269.00
90043	10 ⁴ Å	10μ	25cm	50mm	\$10,769.00
90053	10 ⁴ Å	10μ	50cm	50mm	\$16,269.00
90044	10 ⁵ Å	10μ	25cm	50mm	\$10,769.00
90054	10 ⁵ Å	10μ	50cm	50mm	\$16,269.00
90045	Mixed Bed	10μ	25cm	50mm	\$11,869.00
90055	Mixed Bed	10μ	50cm	50mm	\$17,149.00
90046	Solid Bead	10μ	25cm	50mm	\$11,869.00
90056	Solid Bead	10μ	50cm	50mm	\$17,149.00

Hydroxylated DVB Columns

Jordi Hydroxylated DVB Columns

Hydroxylated DVB columns provide increased hydrophilicity as compared to 100% divinylbenzene or polystyrene divinylbenzene columns. This has the advantage of preventing column voiding in highly aqueous mobile phases. Column-sample interactions are also eliminated for samples which interact strongly with residual double bonds present in pure DVB gels.



Jordi hydroxylated Gel contains a diol surface chemistry. This tends to improve peak shapes for polar polymers and allows for the use of increased percentages of water. Unlike Polystyrene-DVB columns, Jordi hydroxylated columns have no known solvent limitations.

Advantages of Hydroxylated DVB columns:

- Rugged - applicable in both aqueous and organic solvents
- Solvents - can be changed without damaging the column
- Wide pH Range - pH values from 0 to 14
- Efficient - High plate counts for sharp, symmetrical peaks
- Powerful - High pore-volume for greater resolution
- Long column life - 100% DVB increases life
- Wide range of porosities - 100Å to 10⁵Å, Mixed Beds & SB
- Quality - subjected to rigorous quality checks

Jordi Gel Hydroxylated DVB Applications and Solvents
Typical Applications:
Hydroxypropylmethylcellulose (HPMC)
Typical Solvent Systems:
Tetrahydrofuran (THF)/Acetic Acid 90/10

Jordi FLP supplies a full line of porosities for all our GPC products. We recommend using our 500Å columns for small molecules. Our Mixed Bed Linear Columns are the most versatile choice for polymers.

Hydroxylated DVB Columns

Jordi Gel DVB Hydroxylated Columns					
<i>Cat. #</i>	<i>Pore Size</i>	<i>Particle Size</i>	<i>Length</i>	<i>ID</i>	<i>Price</i>
20010	100Å	5µ	30cm	7.8mm	\$1,155.00
20000	100Å	5µ	25cm	10mm	\$1,155.00
19000	100Å	5µ	50cm	10mm	\$2,195.00
20011	500Å	5µ	30cm	7.8mm	\$1,155.00
20001	500Å	5µ	25cm	10mm	\$1,155.00
19001	500Å	5µ	50cm	10mm	\$2,195.00
20012	10 ³ Å	5µ	30cm	7.8mm	\$1,155.00
20002	10 ³ Å	5µ	25cm	10mm	\$1,155.00
19002	10 ³ Å	5µ	50cm	10mm	\$2,195.00
20013	10 ⁴ Å	5µ	30cm	7.8mm	\$1,155.00
20003	10 ⁴ Å	5µ	25cm	10mm	\$1,155.00
19003	10 ⁴ Å	5µ	50cm	10mm	\$2,195.00
20014	10 ⁵ Å	5µ	30cm	7.8mm	\$1,155.00
20004	10 ⁵ Å	5µ	25cm	10mm	\$1,155.00
19004	10 ⁵ Å	5µ	50cm	10mm	\$2,195.00
20015	Mixed Bed	5µ	30cm	7.8mm	\$1,205.00
20005	Mixed Bed	5µ	25cm	10mm	\$1,205.00
19005	Mixed Bed	5µ	50cm	10mm	\$2,305.00
20016	Solid Bead	5µ	30cm	7.8mm	\$1,205.00
20006	Solid Bead	5µ	25cm	10mm	\$1,205.00
19006	Solid Bead	5µ	50cm	10mm	\$2,305.00
<i>Light Scattering</i>					
20017	Mixed Bed	5µ	30cm	7.8mm	\$1,315.00
20007	Mixed Bed	5µ	25cm	10mm	\$1,315.00
19007	Mixed Bed	5µ	50cm	10mm	\$2,475.00

Jordi Gel DVB Hydroxylated - Solvent Saver					
<i>Cat. #</i>	<i>Pore Size</i>	<i>Particle Size</i>	<i>Length</i>	<i>ID</i>	<i>Price</i>
20261	100Å	5µ	15cm	4.6mm	\$ 545.00
20260	100Å	5µ	25cm	4.6mm	\$ 655.00
20263	500Å	5µ	15cm	4.6mm	\$ 545.00
20262	500Å	5µ	25cm	4.6mm	\$ 655.00
20265	10 ³ Å	5µ	15cm	4.6mm	\$ 545.00
20264	10 ³ Å	5µ	25cm	4.6mm	\$ 655.00
20267	10 ⁴ Å	5µ	15cm	4.6mm	\$ 545.00
20266	10 ⁴ Å	5µ	25cm	4.6mm	\$ 655.00
20269	10 ⁵ Å	5µ	15cm	4.6mm	\$ 545.00
20268	10 ⁵ Å	5µ	25cm	4.6mm	\$ 655.00
20271	Mixed Bed	5µ	15cm	4.6mm	\$ 545.00
20270	Mixed Bed	5µ	25cm	4.6mm	\$ 655.00
20272	Solid Bead	5µ	25cm	4.6mm	\$ 545.00
20273	Solid Bead	5µ	15cm	4.6mm	\$ 655.00

JORDI

Hydroxylated DVB Columns

Jordi Gel DVB Hydroxylated - Prep 1" OD					
<i>Cat. #</i>	<i>Pore Size</i>	<i>Particle Size</i>	<i>Length</i>	<i>ID</i>	<i>Price</i>
20050	100Å	5μ	25cm	22mm	\$ 3,075.00
19050	100Å	5μ	50cm	22mm	\$ 4,175.00
20051	500Å	5μ	25cm	22mm	\$ 3,075.00
19051	500Å	5μ	50cm	22mm	\$ 4,175.00
20052	10 ³ Å	5μ	25cm	22mm	\$ 3,075.00
19052	10 ³ Å	5μ	50cm	22mm	\$ 4,175.00
20053	10 ⁴ Å	5μ	25cm	22mm	\$ 3,075.00
19053	10 ⁴ Å	5μ	50cm	22mm	\$ 4,175.00
20054	10 ⁵ Å	5μ	25cm	22mm	\$ 3,075.00
19054	10 ⁵ Å	5μ	50cm	22mm	\$ 4,175.00
20055	Mixed Bed	5μ	25cm	22mm	\$ 3,295.00
19055	Mixed Bed	5μ	50cm	22mm	\$ 4,395.00
20056	Solid Bead	5μ	25cm	22mm	\$ 3,295.00
19056	Solid Bead	5μ	50cm	22mm	\$ 4,395.00

Jordi Gel DVB Hydroxylated - Prep 2" OD					
<i>Cat. #</i>	<i>Pore Size</i>	<i>Particle Size</i>	<i>Length</i>	<i>ID</i>	<i>Price</i>
20250	100Å	10μ	25cm	50mm	\$10,769.00
19250	100Å	10μ	50cm	50mm	\$16,269.00
20251	500Å	10μ	25cm	50mm	\$10,769.00
19251	500Å	10μ	50cm	50mm	\$16,269.00
20252	10 ³ Å	10μ	25cm	50mm	\$10,769.00
19252	10 ³ Å	10μ	50cm	50mm	\$16,269.00
20253	10 ⁴ Å	10μ	25cm	50mm	\$10,769.00
19253	10 ⁴ Å	10μ	50cm	50mm	\$16,269.00
20254	10 ⁵ Å	10μ	25cm	50mm	\$10,769.00
19254	10 ⁵ Å	10μ	50cm	50mm	\$16,269.00
20255	Mixed Bed	10μ	25cm	50mm	\$11,869.00
19255	Mixed Bed	10μ	50cm	50mm	\$17,149.00
20256	Solid Bead	10μ	25cm	50mm	\$11,869.00
19256	Solid Bead	10μ	50cm	50mm	\$17,149.00



Core Values

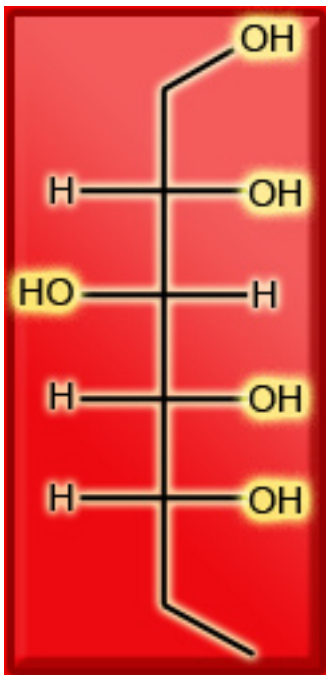
Servant-hood, Christ Likeness -

Considering the needs of our customers and exceeding their expectations.

To see the next Jordi core value turn to page 58.

Jordi Glucose DVB Columns

Glucose columns provide a polar surface chemistry for GPC analyses in aqueous buffer solutions or organic solvents. The 100% divinylbenzene core imparts higher strength and rigidity as compared to methacrylate gels and will not dissolve at extremes of pH. Glucose columns are applicable for a wide range of polar polymers including polysaccharides and many polar synthetic materials.



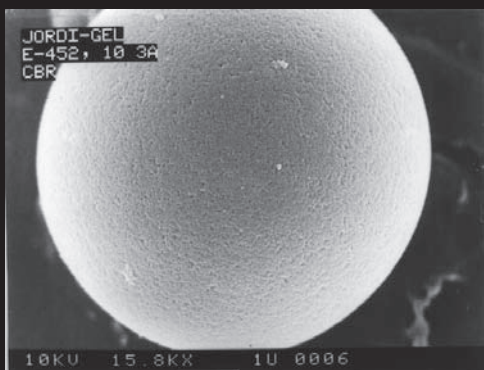
Jordi Glucose columns are for use with aqueous solvents modified with buffers, salts, and strong or weak acids, providing:

- Improved Resolution - 10mm column dimensions standard
- Solvent Compatibility - 100% organic to 100% aqueous buffers
- Powerful - high pore-volume for greater resolution
- Long column life - extended column life reduces cost
- Linear Calibrations - maximize precision of MW calculations
- Wide range of porosities - 100Å to 10⁵Å, Mixed Bed & SB
- Wide pH Range - pH values from 0 to 14
- Quality - glucose columns have been in continuous production for over 15 years and are subjected to rigorous quality checks

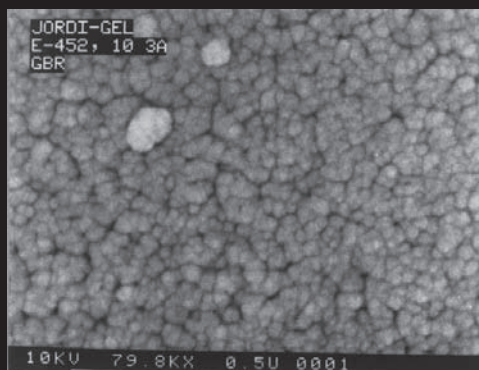
Jordi uses a unique approach in the production of Glucose DVB packing materials. Production begins with a highly cross-linked divinylbenzene gel to which glucose is attached. The DVB base material provides strength, resilience, and chemical stability. The glucose groups cause the packing to be compatible with both polar samples and polar solvents. Jordi Glucose DVB columns are available in a broad range of porosities for all your aqueous separations. As an example, 5 million MW polyacrylic acid standards are not excluded from 10⁵Å glucose DVB columns. The small

pore sizes provide sharp symmetrical peaks for the separation of corn syrups into their oligomers. Highly efficient 5 micron particles are used for all our glucose packings providing the efficiency you have come to expect with Jordi. The small pore-sized materials will withstand pressures up to 30,000psig; The large pore sized packings will withstand pressures up to 2,000psig.

Glucose DVB Applications and Solvents
Typical Applications:
Peptides
Polysaccharides
Carboxymethyl Cellulose
Polyacrylamides
Polyacrylic Acids
Typical Solvent Systems:
0.1M HNO ₃
DMSO
NMP
Chloroform
1M NaOH

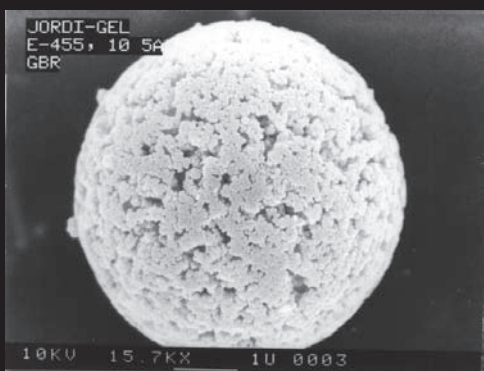


15,800x

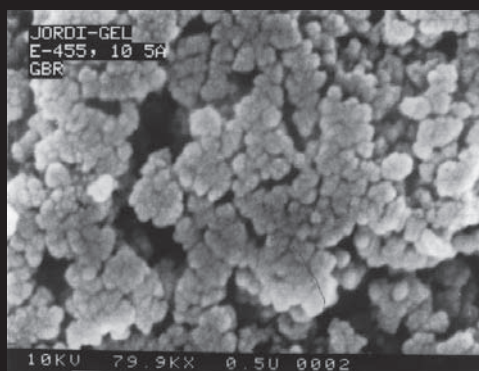


GBR 10³A

79,000x



15,700x



GBR 10⁵A

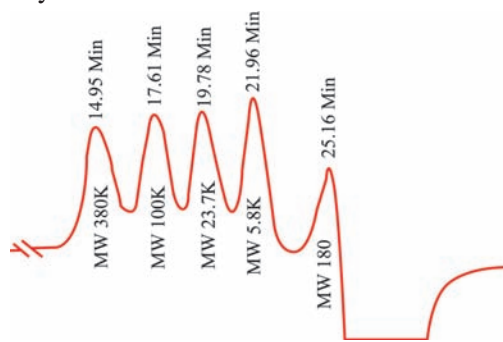
79,900x

Polysaccharide Standards



Column: Jordi Glucose DVB Linear
50cm x 10mm ID
Solvent: 1 M NaOH
Flow Rate: 1.0mL/min
Col. Temp.: 40°C
Detector: RI, 4x
Sample.: 0.1% 853K, 186K, 48K, 12.2K in H₂O Glucose, 0.25% in H₂O

Polysaccharide Standards



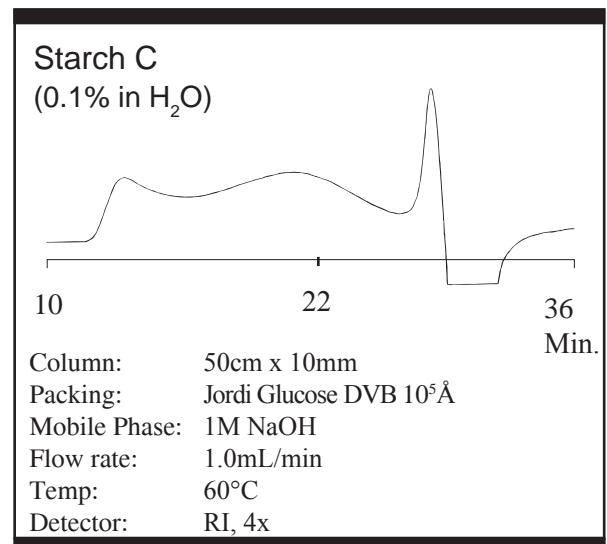
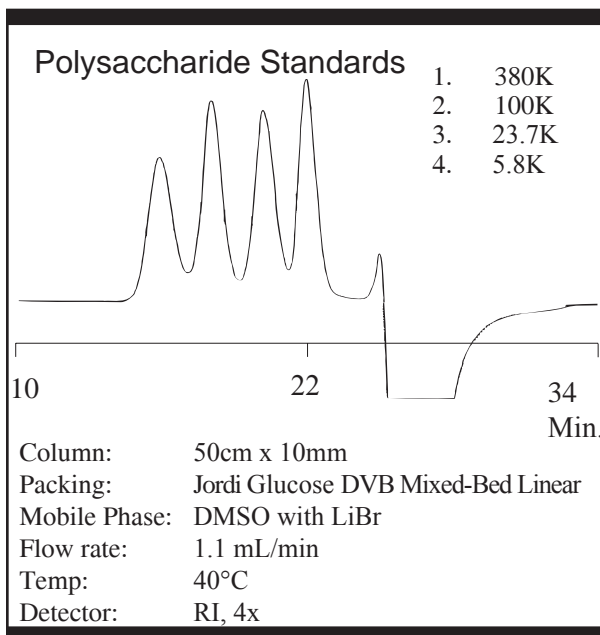
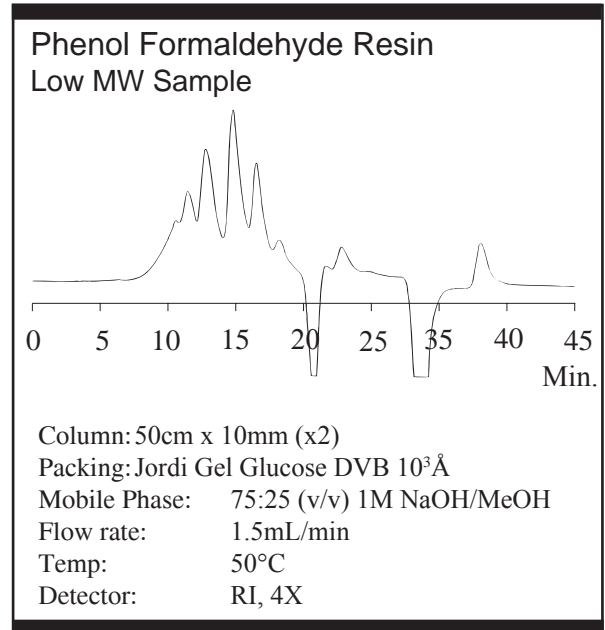
Column: Jordi Glucose DVB Linear
50cm x 10mm ID
Solvent: 1 M NaOH
Flow Rate: 1.0mL/min
Col. Temp.: 40°C
Detector: RI, 4x
Sample.: 0.1% 380K, 100K, 23.7K, 5.8K in H₂O Glucose, 0.25% in H₂O

Select Jordi Glucose DVB Applications

Glucose DVB Columns Can Improve Your Separation

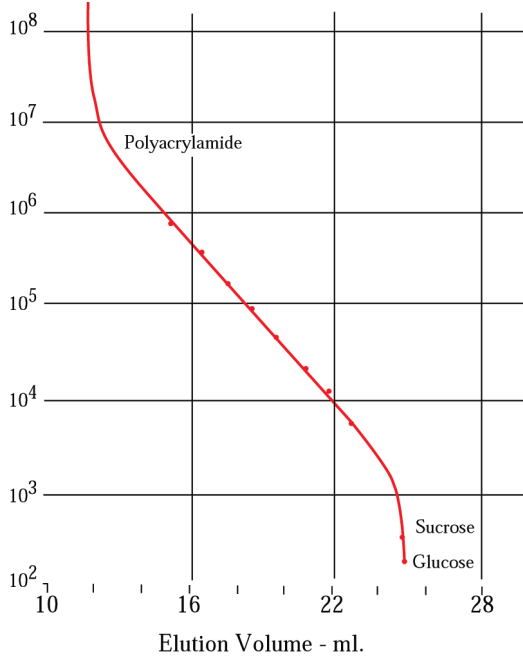
Typical samples include polysaccharides, polyacrylic acids, carboxymethyl cellulose, polyacrylamides, carrageenans, starches, hyaluronic acid and lignins. Use buffer salts, strong or weak acids, or organic solvents as mobile phase modifiers to improve peak shape.

Glucose units are attached to both the DVB polymer backbone and the aromatic ring. The glucose groups make the packing compatible with both polar samples and polar solvents, while the base DVB provides strength, resiliency and chemical stability. Aqueous buffers, 1M NaOH, 0.1N HNO₃, and water with organic modifiers such as an alcohol, acetonitrile, THF or DMSO have been used successfully.

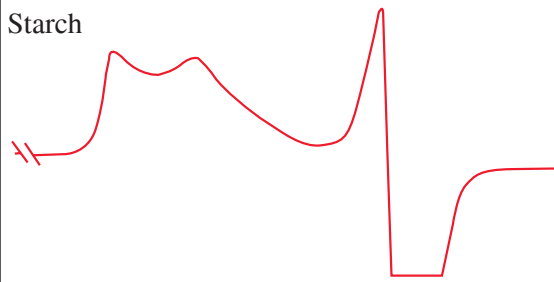


Polysaccharide Standards Calibration Curve

Column: Jordi Glucose Linear Column
50cm x 10mm ID
Solvent: 1 Molar NaOH
Flow Rate: 1mL/min
Col. Temp.: 40°C
Sample.: Polysaccharide Standards and Polyacrylamide

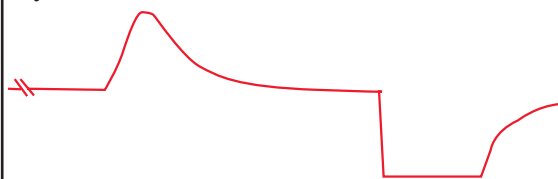


Starch



Column: Jordi Glucose Linear
50cm x 10mm ID
Solvent: 1M NaOH
Flow Rate: 1.0mL/min
Col. Temp.: 40°C
Detector: RI, 2x
Sample.: 0.1% in 1M NaOH

Hyaluronic Acid



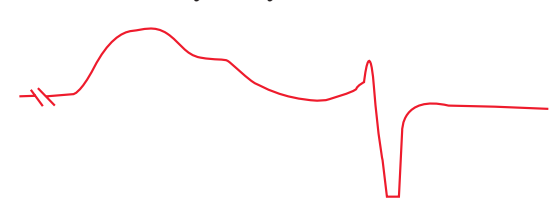
Column: Jordi Glucose 10⁵Å
50cm x 10mm ID
Solvent: 1 M NaOH
Flow Rate: 1.0mL/min
Col. Temp.: 60°C
Detector: RI, 4x
Sample.: 0.05% in H₂O

Polyacrylamide Standard

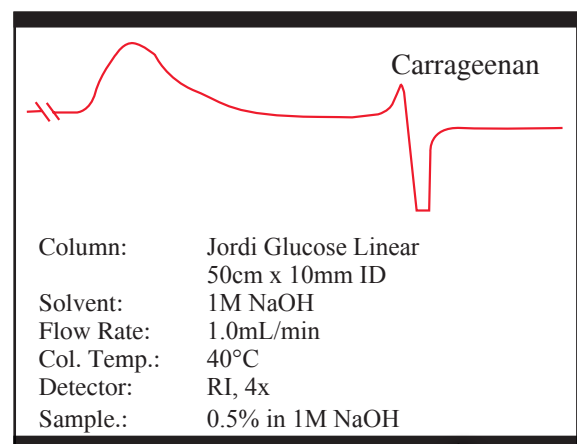
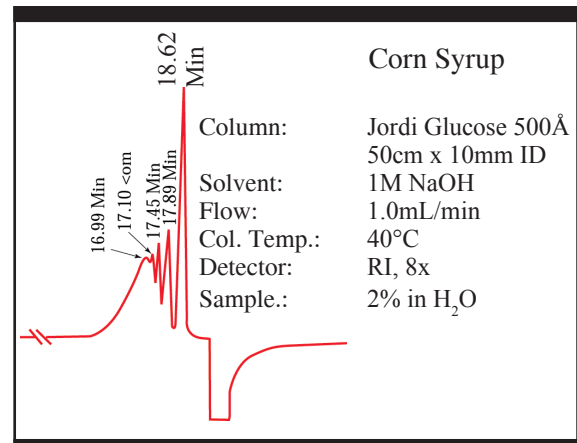
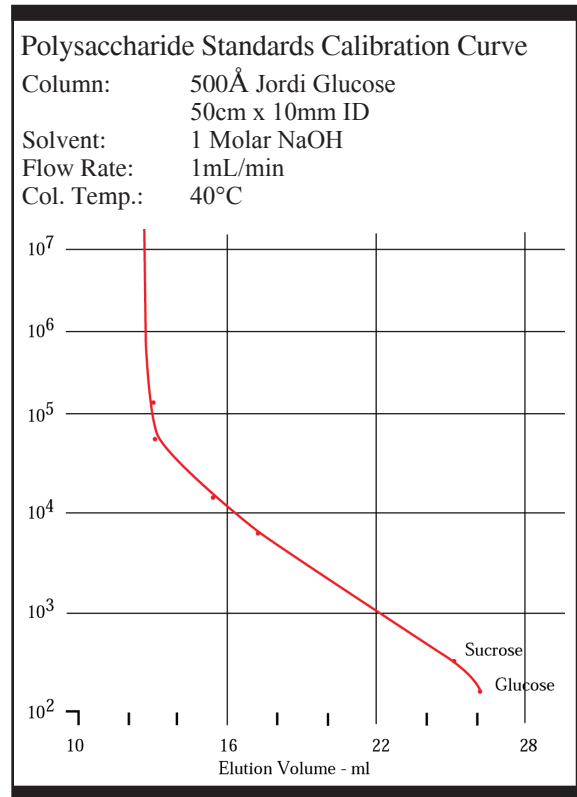
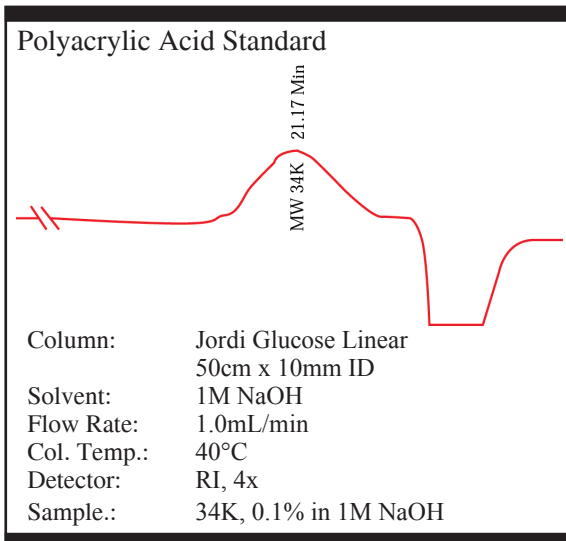
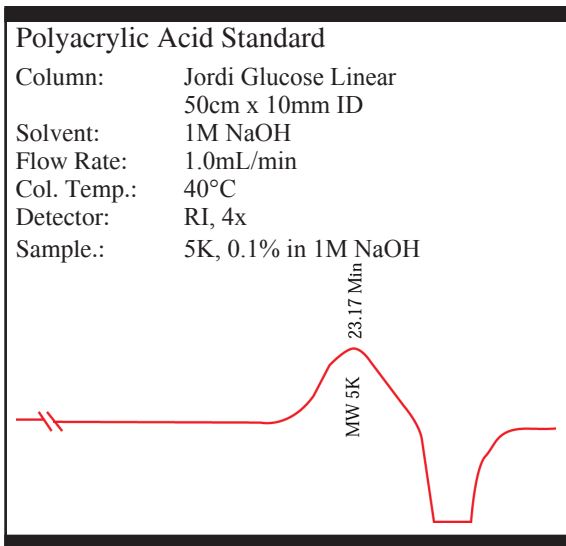
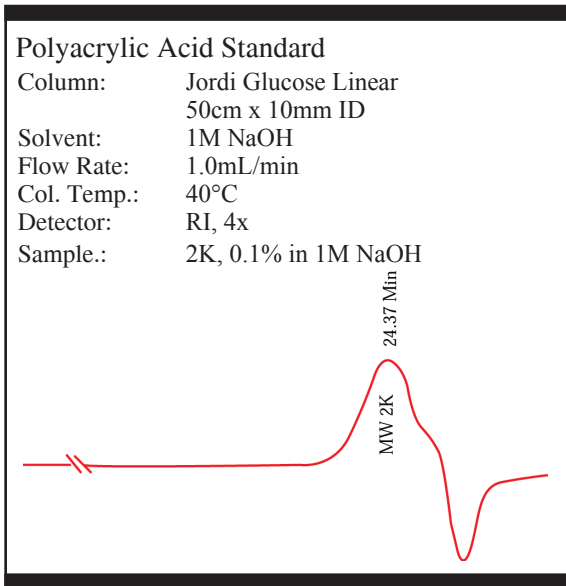
Column: Jordi Glucose Linear
50cm x 10mm ID
Solvent: 1 M NaOH
Flow Rate: 1.0mL/min
Col. Temp.: 40°C
Detector: RI, 4x
Sample.: MW 5.5 Million/13.37 Min.

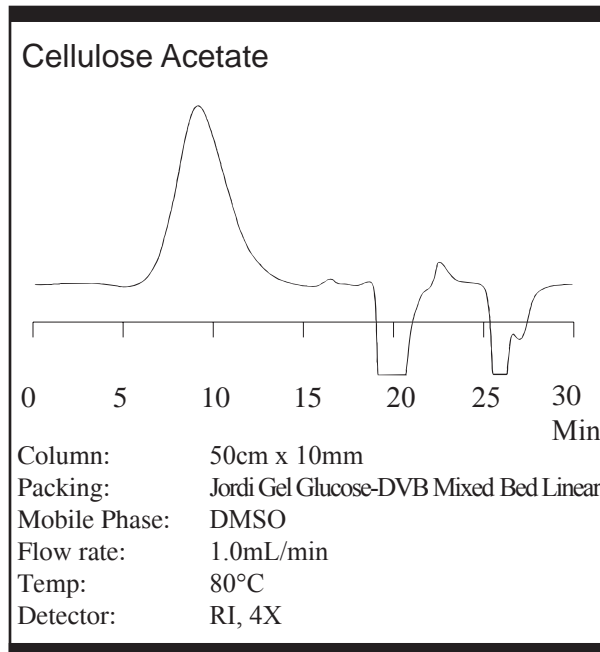
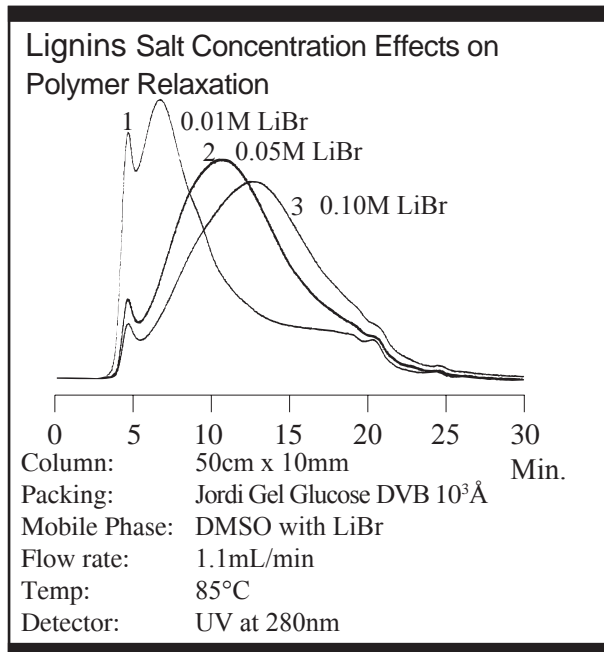


Sodium Carboxymethyl Cellulose



Column: Jordi Glucose Linear
50cm x 10mm ID
Solvent: 1M NaOH
Flow Rate: 1.0mL/min
Col. Temp.: 40°C
Detector: RI, 4x
Sample.: 0.25% in 1M NaOH





Jordi Gel DVB Glucose Columns

Cat. #	Pore Size	Particle Size	Length	ID	Price
30060	100Å	5µ	30cm	7.8mm	\$1,155.00
15060	100Å	5µ	25cm	10mm	\$1,155.00
15050	100Å	5µ	50cm	10mm	\$2,195.00
30061	500Å	5µ	30cm	7.8mm	\$1,155.00
15061	500Å	5µ	25cm	10mm	\$1,155.00
15051	500Å	5µ	50cm	10mm	\$2,195.00
30062	10 ³ Å	5µ	30cm	7.8mm	\$1,155.00
15062	10 ³ Å	5µ	25cm	10mm	\$1,155.00
15052	10 ³ Å	5µ	50cm	10mm	\$2,195.00
30063	10 ⁴ Å	5µ	30cm	7.8mm	\$1,155.00
15063	10 ⁴ Å	5µ	25cm	10mm	\$1,155.00
15053	10 ⁴ Å	5µ	50cm	10mm	\$2,195.00
30064	10 ⁵ Å	5µ	30cm	7.8mm	\$1,155.00
15064	10 ⁵ Å	5µ	25cm	10mm	\$1,155.00
15054	10 ⁵ Å	5µ	50cm	10mm	\$2,195.00
30065	Mixed Bed	5µ	30cm	7.8mm	\$1,205.00
15065	Mixed Bed	5µ	25cm	10mm	\$1,205.00
15055	Mixed Bed	5µ	50cm	10mm	\$2,305.00
30066	Solid Bead	5µ	30cm	7.8mm	\$1,205.00
15066	Solid Bead	5µ	25cm	10mm	\$1,205.00
15056	Solid Bead	5µ	50cm	10mm	\$2,305.00
Light Scattering					
30067	Mixed Bed	5µ	30cm	7.8mm	\$1,315.00
15067	Mixed Bed	5µ	25cm	10mm	\$1,315.00
15057	Mixed Bed	5µ	50cm	10mm	\$2,475.00

Jordi Gel DVB Glucose Columns — Solvent Saver					
<i>Cat. #</i>	<i>Pore Size</i>	<i>Particle Size</i>	<i>Length</i>	<i>ID</i>	<i>Price</i>
15371	100Å	5µ	15cm	4.6mm	\$ 545.00
15370	100Å	5µ	25cm	4.6mm	\$ 655.00
15373	500Å	5µ	15cm	4.6mm	\$ 545.00
15372	500Å	5µ	25cm	4.6mm	\$ 655.00
15375	10 ³ Å	5µ	15cm	4.6mm	\$ 545.00
15374	10 ³ Å	5µ	25cm	4.6mm	\$ 655.00
15377	10 ⁴ Å	5µ	15cm	4.6mm	\$ 545.00
15376	10 ⁴ Å	5µ	25cm	4.6mm	\$ 655.00
15379	10 ⁵ Å	5µ	15cm	4.6mm	\$ 545.00
15378	10 ⁵ Å	5µ	25cm	4.6mm	\$ 655.00
15381	Mixed Bed	5µ	15cm	4.6mm	\$ 545.00
15380	Mixed Bed	5µ	25cm	4.6mm	\$ 655.00
15383	Solid Bead	5µ	15cm	4.6mm	\$ 545.00
15382	Solid Bead	5µ	25cm	4.6mm	\$ 655.00

JORDI GPC SPECIFICATIONS	
<i>Description</i>	<i>MW Range</i>
GPC Solid Bead	2,000-400,000,000
GPC 100Å	<50-5,000
GPC 500Å	<50-10,000
GPC 10 ³ Å	<100-50,000
GPC 10 ⁴ Å	100-100,000
GPC 10 ⁵ Å	10,000->10,000,000
GPC Mixed Bed	100->10,000,000

Jordi Gel DVB Glucose Columns —Prep 1” OD					
<i>Cat. #</i>	<i>Pore Size</i>	<i>Particle Size</i>	<i>Length</i>	<i>ID</i>	<i>Price</i>
15160	100Å	5µ	25cm	22mm	\$3,075.00
15150	100Å	5µ	50cm	22mm	\$4,175.00
15161	500Å	5µ	25cm	22mm	\$3,075.00
15151	500Å	5µ	50cm	22mm	\$4,175.00
15162	10 ³ Å	5µ	25cm	22mm	\$3,075.00
15152	10 ³ Å	5µ	50cm	22mm	\$4,175.00
15163	10 ⁴ Å	5µ	25cm	22mm	\$3,075.00
15153	10 ⁴ Å	5µ	50cm	22mm	\$4,175.00
15164	10 ⁵ Å	5µ	25cm	22mm	\$3,075.00
15154	10 ⁵ Å	5µ	50cm	22mm	\$4,175.00
15165	Mixed Bed	5µ	25cm	22mm	\$3,295.00
15155	Mixed Bed	5µ	50cm	22mm	\$4,395.00
15390	Solid Bead	5µ	25cm	22mm	\$3,295.00
15391	Solid Bead	5µ	50cm	22mm	\$4,395.00

Jordi Gel Glucose Columns — Prep 2” OD					
<i>Cat. #</i>	<i>Pore Size</i>	<i>Particle Size</i>	<i>Length</i>	<i>ID</i>	<i>Price</i>
15360	100Å	10µ	25cm	50mm	\$10,769.00
15350	100Å	10µ	50cm	50mm	\$16,269.00
15361	500Å	10µ	25cm	50mm	\$10,769.00
15351	500Å	10µ	50cm	50mm	\$16,269.00
15362	10 ³ Å	10µ	25cm	50mm	\$10,769.00
15352	10 ³ Å	10µ	50cm	50mm	\$16,269.00
15363	10 ⁴ Å	10µ	25cm	50mm	\$10,769.00
15353	10 ⁴ Å	10µ	50cm	50mm	\$16,269.00
15364	10 ⁵ Å	10µ	25cm	50mm	\$10,769.00
15354	10 ⁵ Å	10µ	50cm	50mm	\$16,269.00
15365	Mixed Bed	10µ	25cm	50mm	\$11,869.00
15355	Mixed Bed	10µ	50cm	50mm	\$17,149.00
15396	Solid Bead	10µ	25cm	50mm	\$11,869.00
15397	Solid Bead	10µ	50cm	50mm	\$17,149.00

Sulfonated DVB Columns

Jordi Sulfonated DVB Columns

Sulfonated DVB columns are an excellent choice for the analysis of anionic polymers in aqueous buffer solutions. Sulfonated groups are attached to the surface of core DVB particles imparting a strong negative charge to the surface. Ionic repulsion prevents column sample interactions without the need for high salt concentrations. The 100% divinylbenzene core particles increase column life and allow for wide solvent compatibility.



Advantages of Sulfonated DVB columns:

- Rugged - solvent changes will not damage columns
- Solvent Compatibility - 100% organic to 100% aqueous buffers
- Wide pH Range - pH values from 0 to 14
- Powerful - High pore-volume for greater resolution
- Range of Porosities - 100Å to 10⁵Å, Mixed Bed & SB
- Long Column Life - 3 month warranty standard
- Quality - subjected to rigorous quality checks

Jordi FLP supplies a full line of porosities for all our GPC products. We recommend using our 500Å columns for small molecules. Our Mixed-Bed Linear Columns are the most versatile choice for polymers.

Sulfonated DVB Applications and Solvents

Typical Applications:

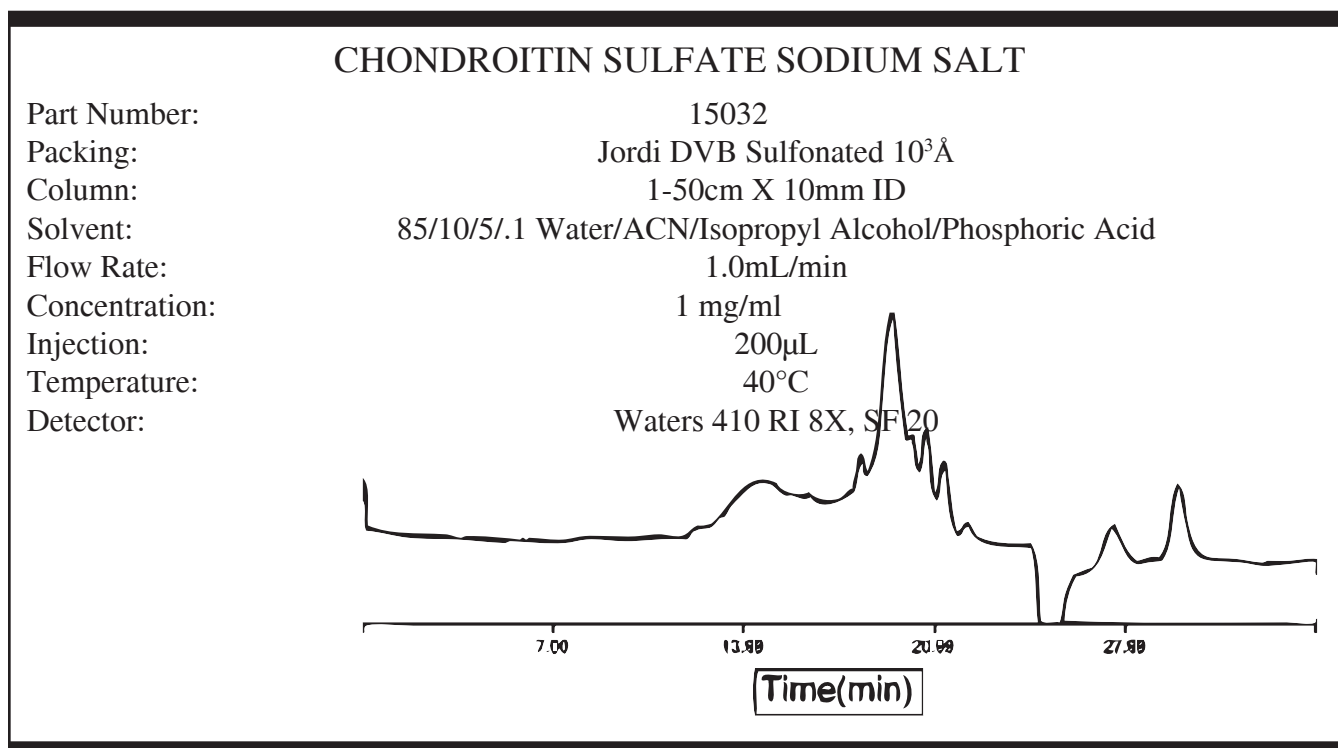
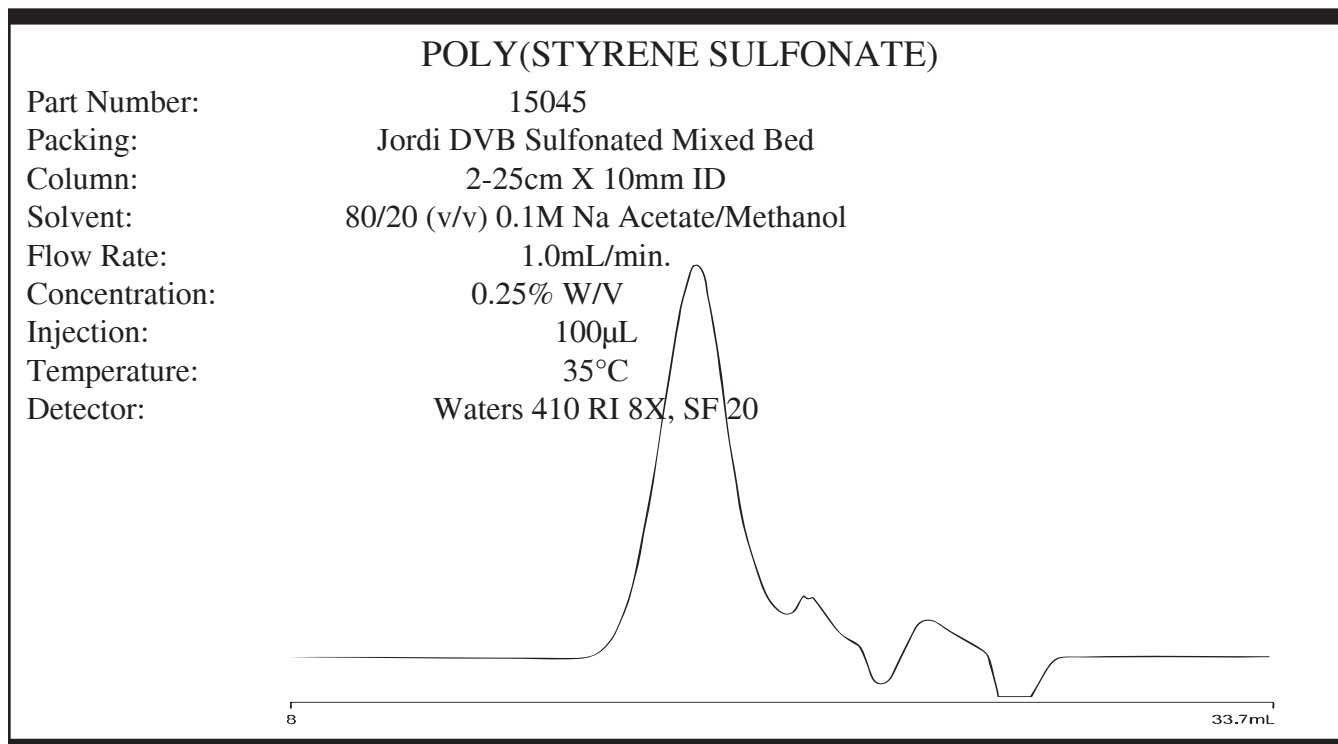
Poly(styrene sulfonate)
Phosphoric compounds
Lignin sulfonate
Organic acids
Carboxylated polymers

Typical Solvent Systems:

1M NaOH
90/10 – H₂O/Acetic Acid
.01M Phosphoric Acid
80/20 - .1M
Na Acetate/Methanol

Sulfonated DVB Columns

Select Jordi Sulfonated DVB Applications



Jordi Gel DVB Sulfonated Columns					
<i>Cat. #</i>	<i>Pore Size</i>	<i>Particle Size</i>	<i>Length</i>	<i>ID</i>	<i>Price</i>
15720	100Å	5µ	30cm	7.8mm	\$1,155.00
15040	100Å	5µ	25cm	10mm	\$1,155.00
15030	100Å	5µ	50cm	10mm	\$2,195.00
15721	500Å	5µ	30cm	7.8mm	\$1,155.00
15041	500Å	5µ	25cm	10mm	\$1,155.00
15031	500Å	5µ	50cm	10mm	\$2,195.00
15722	10 ³ Å	5µ	30cm	7.8mm	\$1,155.00
15042	10 ³ Å	5µ	25cm	10mm	\$1,155.00
15032	10 ³ Å	5µ	50cm	10mm	\$2,195.00
15723	10 ⁴ Å	5µ	30cm	7.8mm	\$1,155.00
15043	10 ⁴ Å	5µ	25cm	10mm	\$1,155.00
15033	10 ⁴ Å	5µ	50cm	10mm	\$2,195.00
15724	10 ⁵ Å	5µ	30cm	7.8mm	\$1,155.00
15044	10 ⁵ Å	5µ	25cm	10mm	\$1,155.00
15034	10 ⁵ Å	5µ	50cm	10mm	\$2,195.00
15725	Mixed Bed	5µ	30cm	7.8mm	\$1,205.00
15045	Mixed Bed	5µ	25cm	10mm	\$1,205.00
15035	Mixed Bed	5µ	50cm	10mm	\$2,305.00
15726	Solid Bead	5µ	30cm	7.8mm	\$1,205.00
15046	Solid Bead	5µ	25cm	10mm	\$1,205.00
15036	Solid Bead	5µ	50cm	10mm	\$2,305.00
<i>Light Scattering</i>					
15727	Mixed Bed	5µ	30cm	7.8mm	\$1,315.00
15047	Mixed Bed	5µ	25cm	10mm	\$1,315.00
15037	Mixed Bed	5µ	50cm	10mm	\$2,475.00

Jordi Gel DVB Sulfonated - Solvent Saver					
<i>Cat. #</i>	<i>Pore Size</i>	<i>Particle Size</i>	<i>Length</i>	<i>ID</i>	<i>Price</i>
15251	100Å	5µ	15cm	4.6mm	\$ 545.00
15250	100Å	5µ	25cm	4.6mm	\$ 655.00
15253	500Å	5µ	15cm	4.6mm	\$ 545.00
15252	500Å	5µ	25cm	4.6mm	\$ 655.00
15255	10 ³ Å	5µ	15cm	4.6mm	\$ 545.00
15254	10 ³ Å	5µ	25cm	4.6mm	\$ 655.00
15257	10 ⁴ Å	5µ	15cm	4.6mm	\$ 545.00
15256	10 ⁴ Å	5µ	25cm	4.6mm	\$ 655.00
15259	10 ⁵ Å	5µ	15cm	4.6mm	\$ 545.00
15258	10 ⁵ Å	5µ	25cm	4.6mm	\$ 655.00
15261	Mixed Bed	5µ	15cm	4.6mm	\$ 545.00
15260	Mixed Bed	5µ	25cm	4.6mm	\$ 655.00
15263	Solid Bead	5µ	15cm	4.6mm	\$ 545.00
15262	Solid Bead	5µ	25cm	4.6mm	\$ 655.00

Jordi Gel DVB Sulfonated - Prep 1" OD					
<i>Cat. #</i>	<i>Pore Size</i>	<i>Particle Size</i>	<i>Length</i>	<i>ID</i>	<i>Price</i>
15140	100Å	5µ	25cm	22mm	\$ 3,075.00
15130	100Å	5µ	50cm	22mm	\$ 4,175.00
15141	500Å	5µ	25cm	22mm	\$ 3,075.00
15131	500Å	5µ	50cm	22mm	\$ 4,175.00
15142	10 ³ Å	5µ	25cm	22mm	\$ 3,075.00
15132	10 ³ Å	5µ	50cm	22mm	\$ 4,175.00
15143	10 ⁴ Å	5µ	25cm	22mm	\$ 3,075.00
15133	10 ⁴ Å	5µ	50cm	22mm	\$ 4,175.00
15144	10 ⁵ Å	5µ	25cm	22mm	\$ 3,075.00
15134	10 ⁵ Å	5µ	50cm	22mm	\$ 4,175.00
15145	Mixed Bed	5µ	25cm	22mm	\$ 3,295.00
15135	Mixed Bed	5µ	50cm	22mm	\$ 4,395.00
15146	Solid Bead	5µ	25cm	22mm	\$ 3,295.00
15136	Solid Bead	5µ	50cm	22mm	\$4,395.00

Jordi Gel DVB Sulfonated - Prep 2" OD					
<i>Cat. #</i>	<i>Pore Size</i>	<i>Particle Size</i>	<i>Length</i>	<i>ID</i>	<i>Price</i>
15240	100Å	10µ	25cm	50mm	\$10,769.00
15230	100Å	10µ	50cm	50mm	\$16,269.00
15241	500Å	10µ	25cm	50mm	\$10,769.00
15231	500Å	10µ	50cm	50mm	\$16,269.00
15242	10 ³ Å	10µ	25cm	50mm	\$10,769.00
15232	10 ³ Å	10µ	50cm	50mm	\$16,269.00
15243	10 ⁴ Å	10µ	25cm	50mm	\$10,769.00
15233	10 ⁴ Å	10µ	50cm	50mm	\$16,269.00
15244	10 ⁵ Å	10µ	25cm	50mm	\$10,769.00
15234	10 ⁵ Å	10µ	50cm	50mm	\$16,269.00
15245	Mixed Bed	10µ	25cm	50mm	\$11,869.00
15235	Mixed Bed	10µ	50cm	50mm	\$17,149.00
15246	Solid Bead	10µ	25cm	50mm	\$11,869.00
15236	Solid Bead	10µ	50cm	50mm	\$17,149.00

Jordi Polar Pack Wax Columns

Polar Pack WAX columns are an excellent choice for the analysis of cationic polymers in aqueous buffer solutions. Polar Pack WAX columns have a poly(amino) surface chemistry which becomes positively charged in acidic mobile phases. Ionic repulsion prevents column sample interactions without the need for high salt concentrations. The 100% divinylbenzene core particles increase column lifetime and allow for wide solvent compatibility.



Advantages of Polar Pack WAX columns:

- Rugged - solvent changes will not damage columns
- Solvent Compatibility - 100% polar organics to 100% aqueous buffers
- Wide pH Range - pH values from 0 to 14
- Powerful - High pore-volume for greater resolution with fewer columns
- Range of Porosities - 100Å to 10⁵Å, Mixed Beds & SB
- Long column life - 3 month warranty standard
- Quality - subjected to rigorous quality checks

Use Jordi Polar Pack WAX DVB columns for the analysis of polysaccharides, starches, celluloses and other cationic water soluble polymers.

Polar Pack WAX columns combine our base DVB polymer bonded with polyethyleneimine (PEI) to provide an ionizable surface. This allows complete control over the degree of positive charge. The bonded functional group is a secondary amine. At pH values below 8, the column becomes positively charged. Above pH 8, it becomes neutral.

Polar Pack WAX DVB Applications and Solvents

Typical Applications:

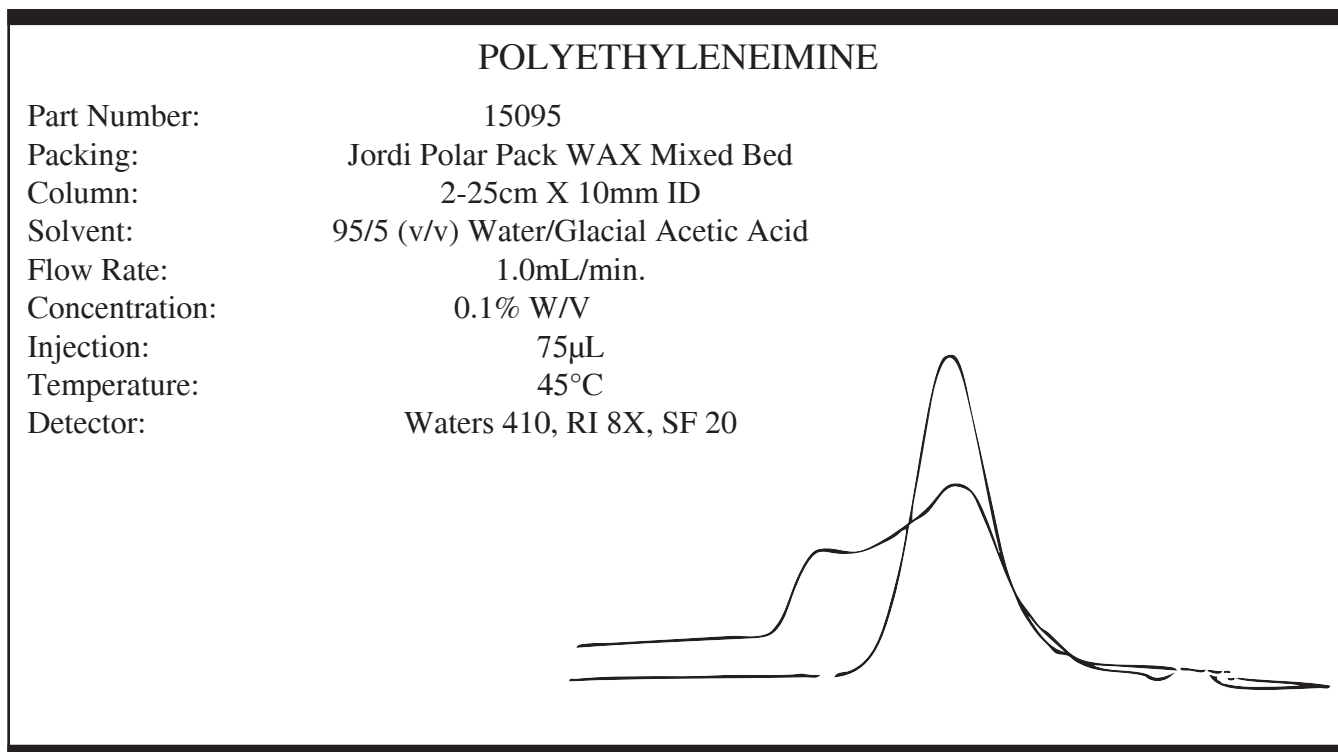
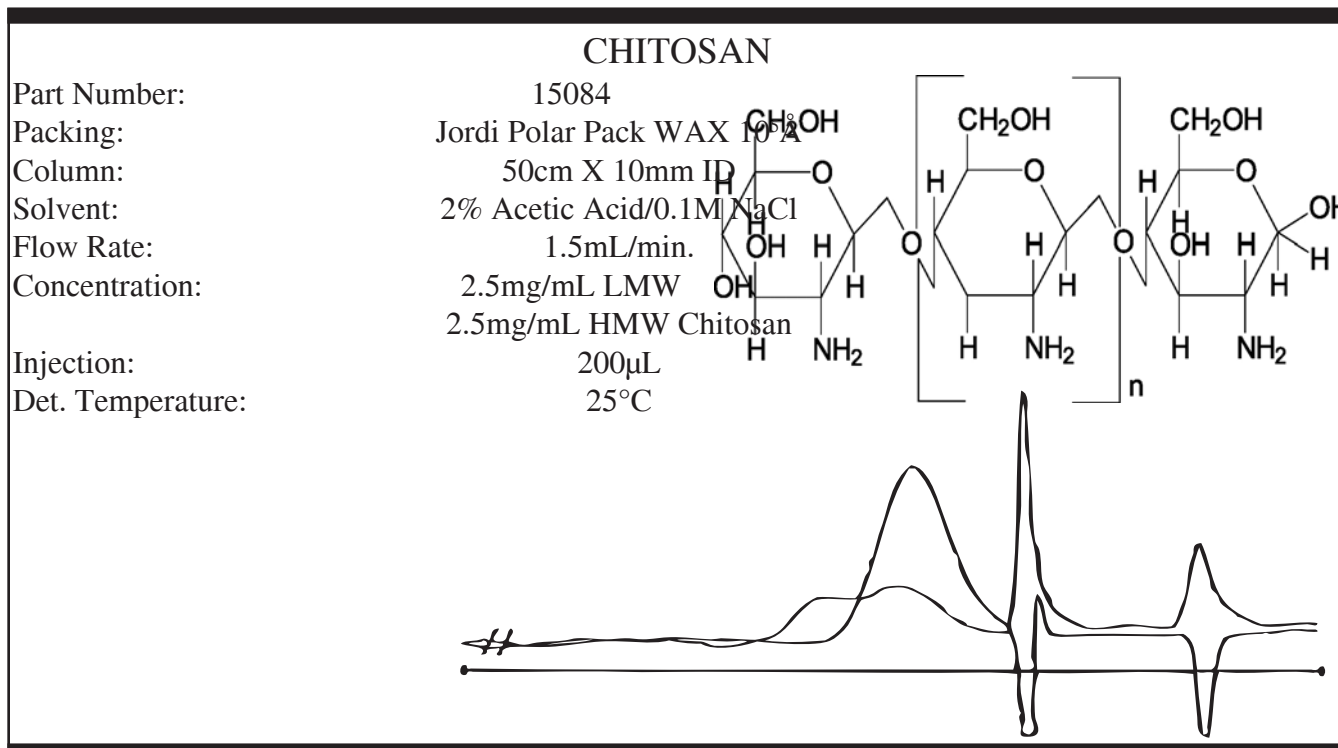
Chitosan
Polysaccharides
Polyethyleneimine
Phospholipids
Quaternized polymers

Typical Solvent Systems:

90/10 - H₂O/Acetic Acid

Polar Pack WAX Columns

Select Polar Pack WAX Applications



Polar Pack WAX Columns

Jordi Gel DVB Polar Pack WAX Columns					
<i>Cat. #</i>	<i>Pore Size</i>	<i>Particle Size</i>	<i>Length</i>	<i>ID</i>	<i>Price</i>
15700	100Å	5µ	30cm	7.8mm	\$1,155.00
15090	100Å	5µ	25cm	10mm	\$1,155.00
15080	100Å	5µ	50cm	10mm	\$2,195.00
15701	500Å	5µ	30cm	7.8mm	\$1,155.00
15091	500Å	5µ	25cm	10mm	\$1,155.00
15081	500Å	5µ	50cm	10mm	\$2,195.00
15702	10 ³ Å	5µ	30cm	7.8mm	\$1,155.00
15092	10 ³ Å	5µ	25cm	10mm	\$1,155.00
15082	10 ³ Å	5µ	50cm	10mm	\$2,195.00
15703	10 ⁴ Å	5µ	30cm	7.8mm	\$1,155.00
15093	10 ⁴ Å	5µ	25cm	10mm	\$1,155.00
15083	10 ⁴ Å	5µ	50cm	10mm	\$2,195.00
15704	10 ⁵ Å	5µ	30cm	7.8mm	\$1,155.00
15094	10 ⁵ Å	5µ	25cm	10mm	\$1,155.00
15084	10 ⁵ Å	5µ	50cm	10mm	\$2,195.00
15705	Mixed Bed	5µ	30cm	7.8mm	\$1,205.00
15095	Mixed Bed	5µ	25cm	10mm	\$1,205.00
15085	Mixed Bed	5µ	50cm	10mm	\$2,305.00
15706	Solid Bead	5µ	30cm	7.8mm	\$1,205.00
15096	Solid Bead	5µ	25cm	10mm	\$1,205.00
15086	Solid Bead	5µ	50cm	10mm	\$2,305.00
Light Scattering					
15707	Mixed Bed	5µ	30cm	7.8mm	\$1,315.00
15097	Mixed Bed	5µ	25cm	10mm	\$1,315.00
15087	Mixed Bed	5µ	50cm	10mm	\$2,475.00

Jordi Gel DVB Polar Pack WAX - Solvent Saver					
<i>Cat. #</i>	<i>Pore Size</i>	<i>Particle Size</i>	<i>Length</i>	<i>ID</i>	<i>Price</i>
15167	100Å	5µ	15cm	4.6mm	\$ 545.00
15166	100Å	5µ	25cm	4.6mm	\$ 655.00
15169	500Å	5µ	15cm	4.6mm	\$ 545.00
15168	500Å	5µ	25cm	4.6mm	\$ 655.00
15171	10 ³ Å	5µ	15cm	4.6mm	\$ 545.00
15170	10 ³ Å	5µ	25cm	4.6mm	\$ 655.00
15173	10 ⁴ Å	5µ	15cm	4.6mm	\$ 545.00
15172	10 ⁴ Å	5µ	25cm	4.6mm	\$ 655.00
15175	10 ⁵ Å	5µ	15cm	4.6mm	\$ 545.00
15174	10 ⁵ Å	5µ	25cm	4.6mm	\$ 655.00
15177	Mixed Bed	5µ	15cm	4.6mm	\$ 545.00
15176	Mixed Bed	5µ	25cm	4.6mm	\$ 655.00
15179	Solid Bead	5µ	15cm	4.6mm	\$ 545.00
15178	Solid Bead	5µ	25cm	4.6mm	\$ 655.00

JORDI

Jordi Gel DVB Polar Pack WAX - Prep 1" OD					
<i>Cat. #</i>	<i>Pore Size</i>	<i>Particle Size</i>	<i>Length</i>	<i>ID</i>	<i>Price</i>
15190	100Å	5µ	25cm	22mm	\$ 3,075.00
15180	100Å	5µ	50cm	22mm	\$ 4,175.00
15191	500Å	5µ	25cm	22mm	\$ 3,075.00
15181	500Å	5µ	50cm	22mm	\$ 4,175.00
15192	10 ³ Å	5µ	25cm	22mm	\$ 3,075.00
15182	10 ³ Å	5µ	50cm	22mm	\$ 4,175.00
15193	10 ⁴ Å	5µ	25cm	22mm	\$ 3,075.00
15183	10 ⁴ Å	5µ	50cm	22mm	\$ 4,175.00
15194	10 ⁵ Å	5µ	25cm	22mm	\$ 3,075.00
15184	10 ⁵ Å	5µ	50cm	22mm	\$ 4,175.00
15195	Mixed Bed	5µ	25cm	22mm	\$ 3,295.00
15185	Mixed Bed	5µ	50cm	22mm	\$ 4,395.00
15196	Solid Bead	5µ	25cm	22mm	\$ 3,295.00
15186	Solid Bead	5µ	50cm	22mm	\$ 4,395.00

Jordi Gel DVB Polar Pack WAX - Prep 2" OD					
<i>Cat. #</i>	<i>Pore Size</i>	<i>Particle Size</i>	<i>Length</i>	<i>ID</i>	<i>Price</i>
15290	100Å	10µ	25cm	50mm	\$10,769.00
15280	100Å	10µ	50cm	50mm	\$16,269.00
15291	500Å	10µ	25cm	50mm	\$10,769.00
15281	500Å	10µ	50cm	50mm	\$16,269.00
15292	10 ³ Å	10µ	25cm	50mm	\$10,769.00
15282	10 ³ Å	10µ	50cm	50mm	\$16,269.00
15293	10 ⁴ Å	10µ	25cm	50mm	\$10,769.00
15283	10 ⁴ Å	10µ	50cm	50mm	\$16,269.00
15294	10 ⁵ Å	10µ	25cm	50mm	\$10,769.00
15284	10 ⁵ Å	10µ	50cm	50mm	\$16,269.00
15295	Mixed Bed	10µ	25cm	50mm	\$11,869.00
15285	Mixed Bed	10µ	50cm	50mm	\$17,149.00
15296	Solid Bead	10µ	25cm	50mm	\$11,869.00
15286	Solid Bead	10µ	50cm	50mm	\$17,149.00